

Napsin A Polyclonal Antibody
Catalog # AP74172**Specification**

Napsin A Polyclonal Antibody - Product Information

Application	IHC
Primary Accession	O96009
Reactivity	Human
Host	Rabbit
Clonality	Polyclonal

Napsin A Polyclonal Antibody - Additional Information**Gene ID** 9476**Other Names**

Napsin-A (EC 3.4.23.-) (Aspartyl protease 4) (ASP4) (Asp 4) (Napsin-1) (TA01/TA02)

Dilution

IHC~~IHC-p 1:50-200, ELISA 1:10000-20000

Format

Liquid in PBS containing 50% glycerol, 0.5% BSA and 0.09% (W/V) sodium azide.

Storage Conditions

-20°C

Napsin A Polyclonal Antibody - Protein Information**Name** NAPSA**Synonyms** NAP1, NAPA**Function**

May be involved in processing of pneumocyte surfactant precursors.

Cellular Location

Secreted.

Tissue Location

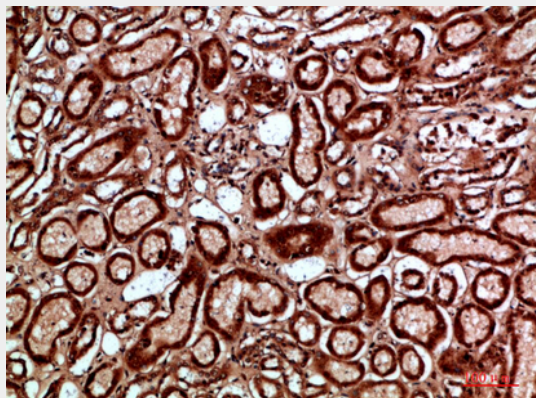
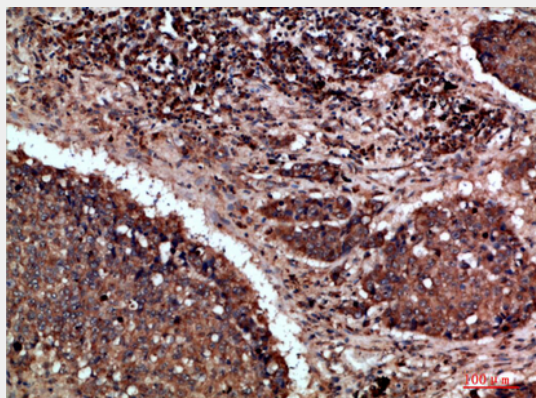
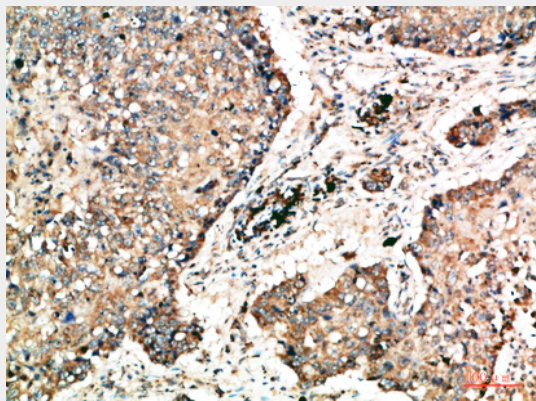
Expressed predominantly in adult lung (type II pneumocytes) and kidney and in fetal lung. Low levels in adult spleen and very low levels in peripheral blood leukocytes

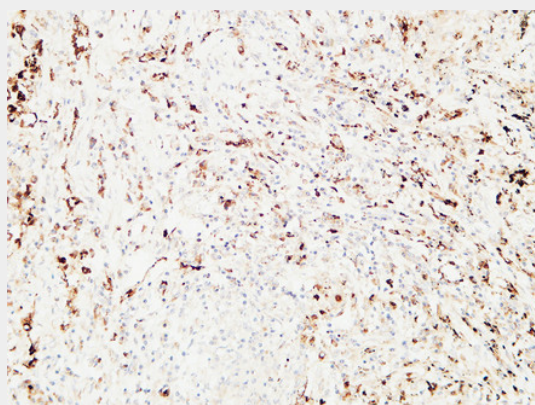
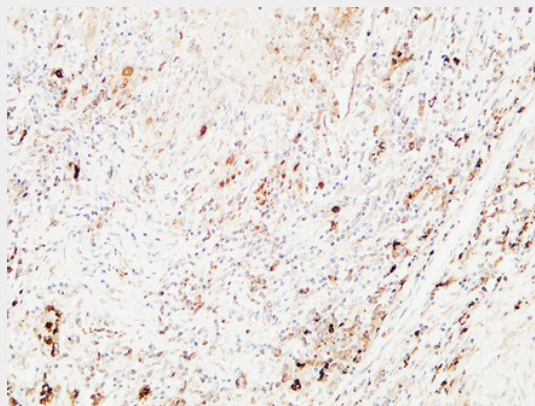
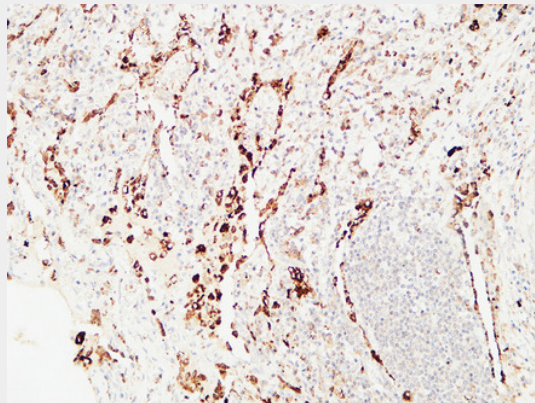
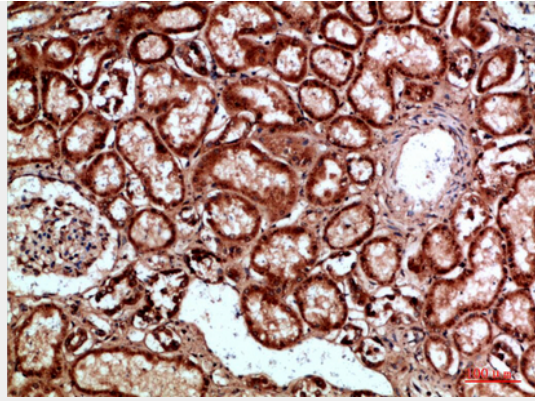
Napsin A Polyclonal Antibody - Protocols

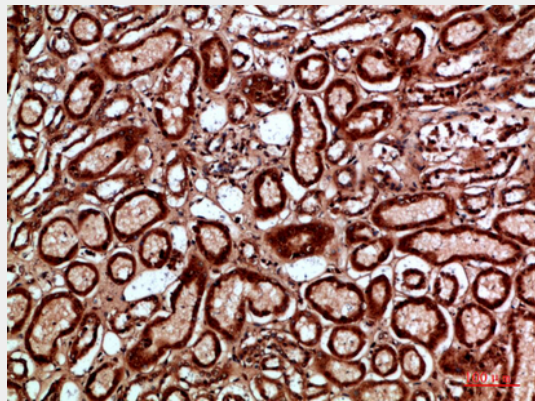
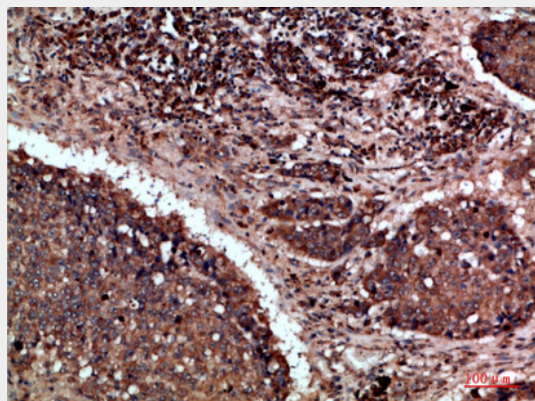
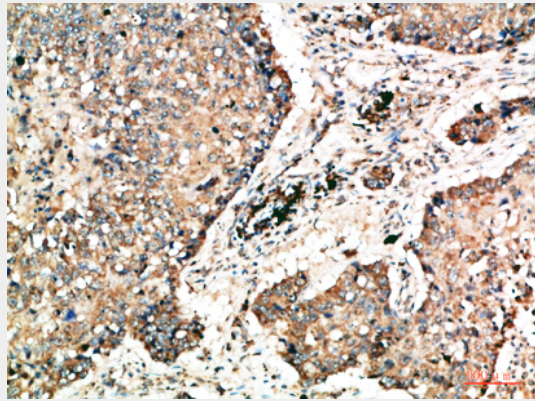
Provided below are standard protocols that you may find useful for product applications.

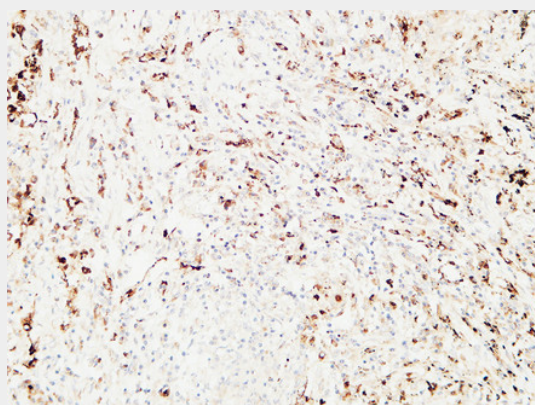
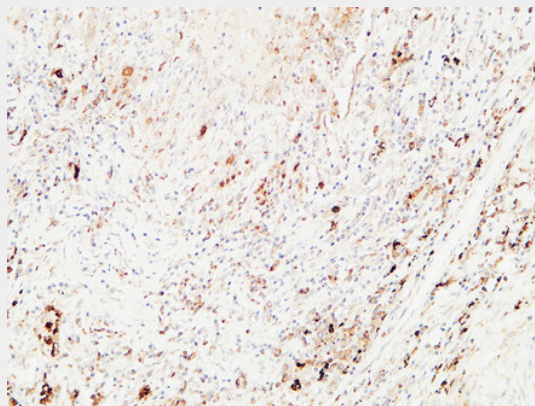
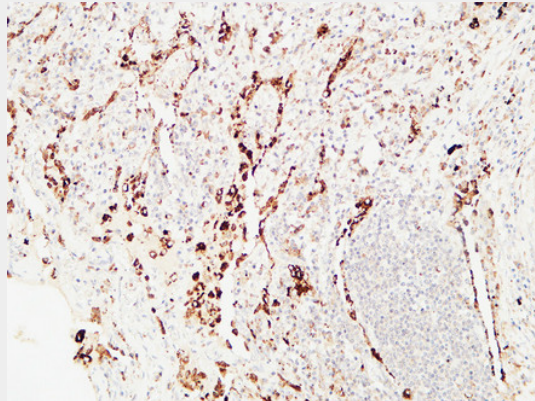
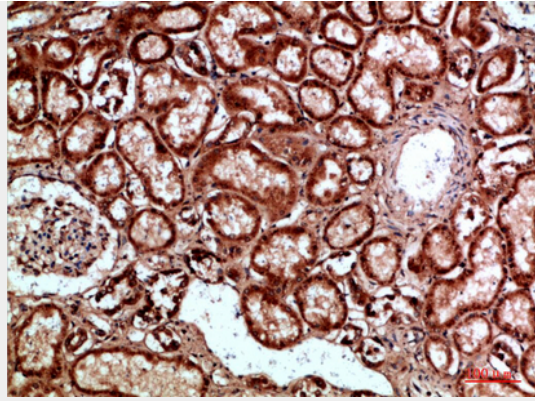
- [Western Blot](#)
- [Blocking Peptides](#)
- [Dot Blot](#)
- [Immunohistochemistry](#)
- [Immunofluorescence](#)
- [Immunoprecipitation](#)
- [Flow Cytometry](#)
- [Cell Culture](#)

Napsin A Polyclonal Antibody - Images









Napsin A Polyclonal Antibody - Background

May be involved in processing of pneumocyte surfactant precursors.