

Thrombospondin 4 Polyclonal Antibody
Catalog # AP74141**Specification**

Thrombospondin 4 Polyclonal Antibody - Product Information

Application	IHC
Primary Accession	P35443
Reactivity	Human
Host	Rabbit
Clonality	Polyclonal

Thrombospondin 4 Polyclonal Antibody - Additional Information**Gene ID** 7060**Other Names**

Thrombospondin-4

Dilution

IHC~~IHC-p 1:50-200, ELISA 1:10000-20000

Format

Liquid in PBS containing 50% glycerol, 0.5% BSA and 0.09% (W/V) sodium azide.

Storage Conditions

-20°C

Thrombospondin 4 Polyclonal Antibody - Protein Information**Name** THBS4**Synonyms** TSP4**Function**

Adhesive glycoprotein that mediates cell-to-cell and cell-to-matrix interactions and is involved in various processes including cellular proliferation, migration, adhesion and attachment, inflammatory response to CNS injury, regulation of vascular inflammation and adaptive responses of the heart to pressure overload and in myocardial function and remodeling. Binds to structural extracellular matrix (ECM) proteins and modulates the ECM in response to tissue damage, contributing to cardioprotective and adaptive ECM remodeling. Plays a role in ER stress response, via its interaction with the activating transcription factor 6 alpha (ATF6) which produces adaptive ER stress response factors and protects myocardium from pressure overload. May contribute to spinal presynaptic hypersensitivity and neuropathic pain states after peripheral nerve injury. May play a role in regulating protective astrogenesis from the subventricular zone (SVZ) niche after injury in a NOTCH1-dependent manner (By similarity).

Cellular Location

Endoplasmic reticulum {ECO:0000250|UniProtKB:Q9Z1T2}. Sarcoplasmic reticulum

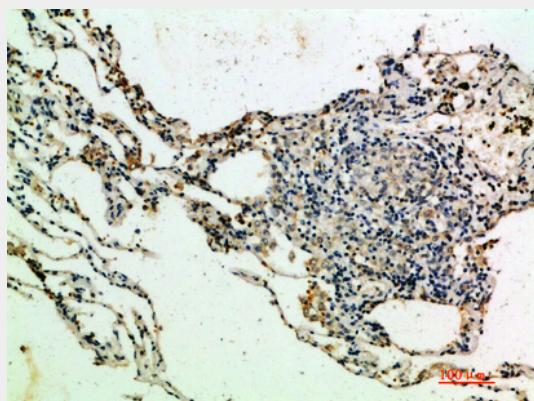
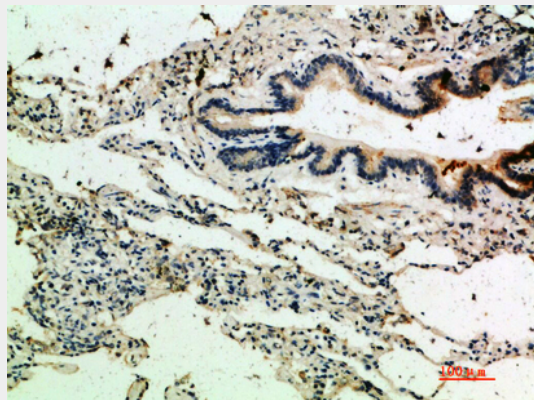
{ECO:0000250|UniProtKB:Q9Z1T2}. Secreted {ECO:0000250|UniProtKB:Q9Z1T2}. Secreted, extracellular space {ECO:0000250|UniProtKB:Q9Z1T2}. Secreted, extracellular space, extracellular matrix {ECO:0000250|UniProtKB:Q9Z1T2}

Thrombospondin 4 Polyclonal Antibody - Protocols

Provided below are standard protocols that you may find useful for product applications.

- [Western Blot](#)
- [Blocking Peptides](#)
- [Dot Blot](#)
- [Immunohistochemistry](#)
- [Immunofluorescence](#)
- [Immunoprecipitation](#)
- [Flow Cytometry](#)
- [Cell Culture](#)

Thrombospondin 4 Polyclonal Antibody - Images



Thrombospondin 4 Polyclonal Antibody - Background

Adhesive glycoprotein that mediates cell-to-cell and cell-to-matrix interactions and is involved in various processes including cellular proliferation, migration, adhesion and attachment, inflammatory response to CNS injury, regulation of vascular inflammation and adaptive responses of the heart to pressure overload and in myocardial function and remodeling. Binds to structural

extracellular matrix (ECM) proteins and modulates the ECM in response to tissue damage, contributing to cardioprotective and adaptive ECM remodeling. Plays a role in ER stress response, via its interaction with the activating transcription factor 6 alpha (ATF6) which produces adaptive ER stress response factors and protects myocardium from pressure overload. May contribute to spinal presynaptic hypersensitivity and neuropathic pain states after peripheral nerve injury. May play a role in regulating protective astrogenesis from the subventricular zone (SVZ) niche after injury in a NOTCH1-dependent manner (By similarity).