

PDGF-C Polyclonal Antibody
Catalog # AP74135**Specification**

PDGF-C Polyclonal Antibody - Product Information

Application	IHC
Primary Accession	O9NRA1
Reactivity	Human, Mouse, Rat
Host	Rabbit
Clonality	Polyclonal

PDGF-C Polyclonal Antibody - Additional Information**Gene ID** 56034**Other Names**

Platelet-derived growth factor C (PDGF-C) (Fallotein) (Spinal cord-derived growth factor) (SCDGF) (VEGF-E) [Cleaved into: Platelet-derived growth factor C, latent form (PDGFC latent form); Platelet-derived growth factor C, receptor-binding form (PDGFC receptor-binding form)]

Dilution

IHC~~IHC-p 1:50-200, ELISA 1:10000-20000

Format

Liquid in PBS containing 50% glycerol, 0.5% BSA and 0.09% (W/V) sodium azide.

Storage Conditions

-20°C

PDGF-C Polyclonal Antibody - Protein Information**Name** PDGFC**Synonyms** SCDGF**Function**

Growth factor that plays an essential role in the regulation of embryonic development, cell proliferation, cell migration, survival and chemotaxis. Potent mitogen and chemoattractant for cells of mesenchymal origin. Required for normal skeleton formation during embryonic development, especially for normal development of the craniofacial skeleton and for normal development of the palate. Required for normal skin morphogenesis during embryonic development. Plays an important role in wound healing, where it appears to be involved in three stages: inflammation, proliferation and remodeling. Plays an important role in angiogenesis and blood vessel development. Involved in fibrotic processes, in which transformation of interstitial fibroblasts into myofibroblasts plus collagen deposition occurs. The CUB domain has mitogenic activity in coronary artery smooth muscle cells, suggesting a role beyond the maintenance of the latency of the PDGF domain. In the nucleus, PDGFC seems to have additional function.

Cellular Location

Cytoplasm, cytosol. Secreted. Nucleus. Cytoplasmic granule. Cell membrane. Note=Sumoylated form is predominant in the nucleus (PubMed:15247255). Stored in alpha granules in platelets (PubMed:15061151).

Tissue Location

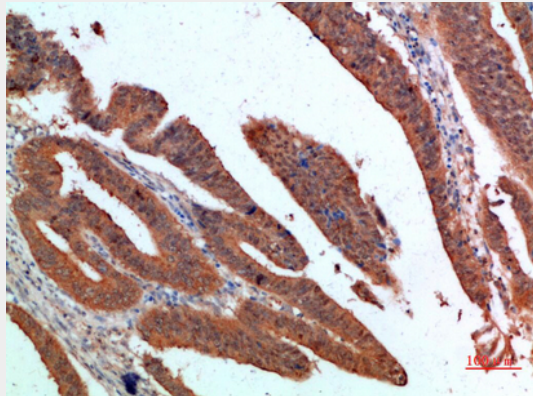
Expressed in the fallopian tube, vascular smooth muscle cells in kidney, breast and colon and in visceral smooth muscle of the gastrointestinal tract. Highly expressed in retinal pigment epithelia. Expressed in medulloblastoma. In the kidney, constitutively expressed in parietal epithelial cells of Bowman's capsule, tubular epithelial cells and in arterial endothelial cells (at protein level) Highly expressed in the platelets, prostate, testis and uterus. Higher expression is observed in uterine leiomyomata. Weaker expression in the spleen, thymus, heart, pancreas, liver, ovary cells and small intestine, and negligible expression in the colon and peripheral blood leukocytes.

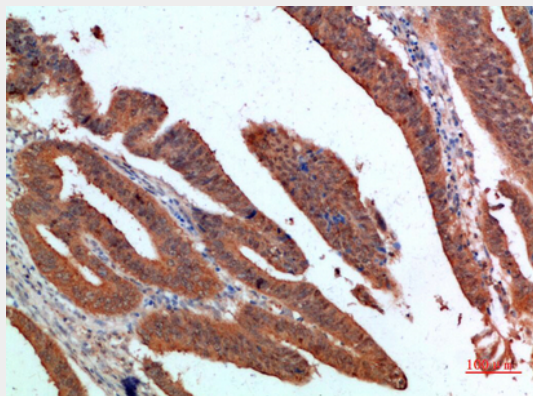
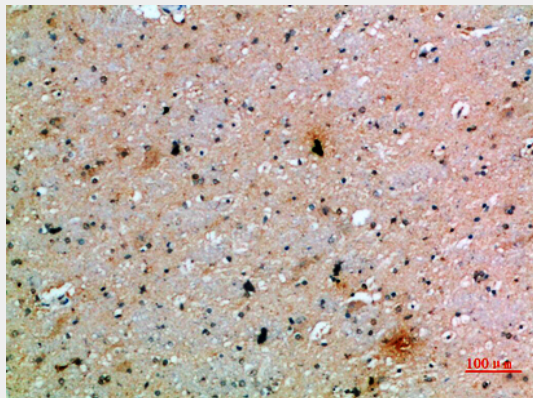
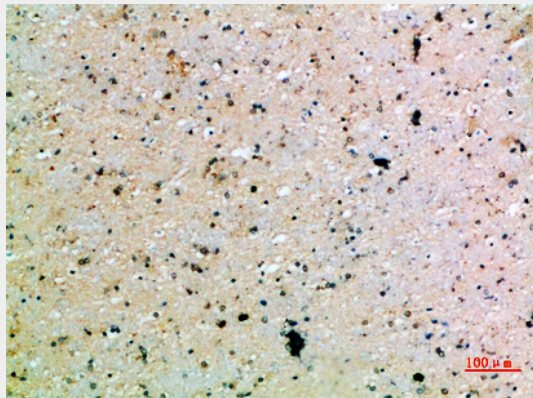
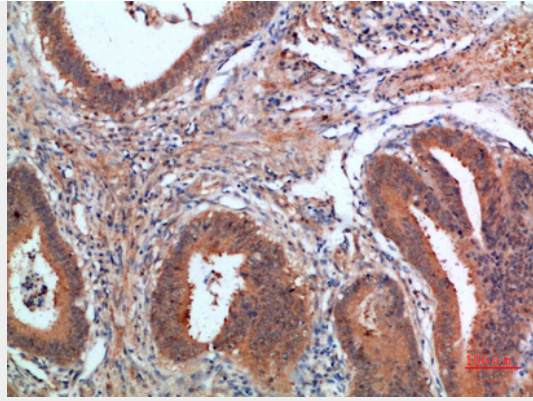
PDGF-C Polyclonal Antibody - Protocols

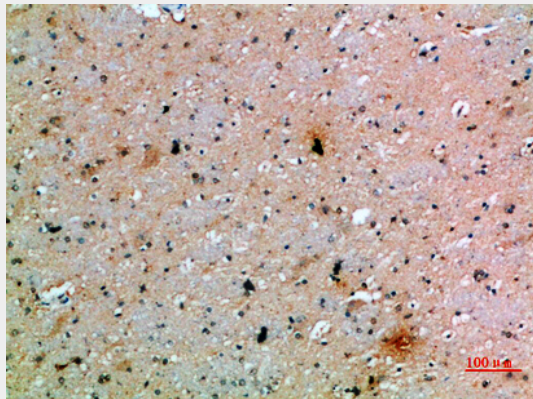
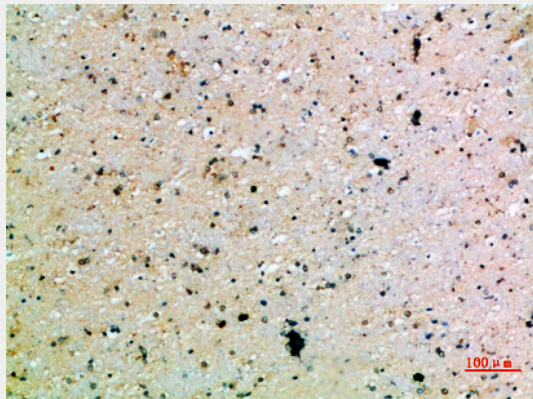
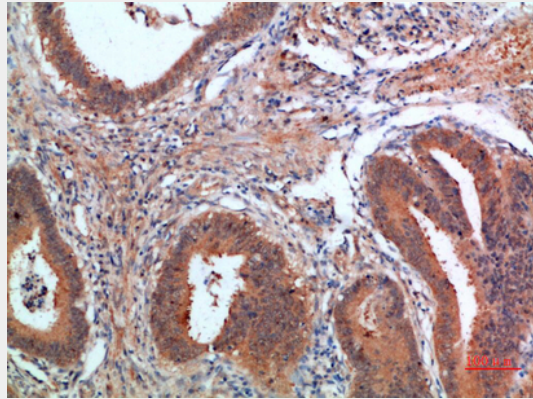
Provided below are standard protocols that you may find useful for product applications.

- [Western Blot](#)
- [Blocking Peptides](#)
- [Dot Blot](#)
- [Immunohistochemistry](#)
- [Immunofluorescence](#)
- [Immunoprecipitation](#)
- [Flow Cytometry](#)
- [Cell Culture](#)

PDGF-C Polyclonal Antibody - Images







PDGF-C Polyclonal Antibody - Background

Growth factor that plays an essential role in the regulation of embryonic development, cell proliferation, cell migration, survival and chemotaxis. Potent mitogen and chemoattractant for cells of mesenchymal origin. Required for normal skeleton formation during embryonic development, especially for normal development of the craniofacial skeleton and for normal development of the palate. Required for normal skin morphogenesis during embryonic development. Plays an important role in wound healing, where it appears to be involved in three stages: inflammation, proliferation and remodeling. Plays an important role in angiogenesis and blood vessel development. Involved in fibrotic processes, in which transformation of interstitial fibroblasts into myofibroblasts plus collagen deposition occurs. The CUB domain has mitogenic activity in coronary artery smooth muscle cells, suggesting a role beyond the maintenance of the latency of the PDGF domain. In the

nucleus, PDGFC seems to have additional function.