

CD218b Polyclonal Antibody
Catalog # AP74123**Specification****CD218b Polyclonal Antibody - Product Information**

Application	IHC
Primary Accession	O95256
Reactivity	Human
Host	Rabbit
Clonality	Polyclonal

CD218b Polyclonal Antibody - Additional Information

Gene ID 8807

Other Names

Interleukin-18 receptor accessory protein (IL-18 receptor accessory protein) (IL-18RAcP) (Accessory protein-like) (AcPL) (CD218 antigen-like family member B) (CDw218b) (IL-1R accessory protein-like) (IL-1RAcPL) (Interleukin-1 receptor 7) (IL-1R-7) (IL-1R7) (Interleukin-18 receptor accessory protein-like) (Interleukin-18 receptor beta) (IL-18R-beta) (IL-18Rbeta) (CD antigen CD218b)

Dilution

IHC~~IHC-p 1:50-200, ELISA 1:10000-20000

Format

Liquid in PBS containing 50% glycerol, 0.5% BSA and 0.09% (W/V) sodium azide.

Storage Conditions

-20°C

CD218b Polyclonal Antibody - Protein InformationName IL18RAP ([HGNC:5989](#))

Synonyms IL1R7

Function

Within the IL18 receptor complex, does not mediate IL18- binding, but involved in IL18-dependent signal transduction, leading to NF-kappa-B and JNK activation (PubMed:14528293, PubMed:25500532, PubMed:9792649). May play a role in IL18-mediated IFNG synthesis from T-helper 1 (Th1) cells (Probable).

Cellular Location

Cell membrane; Single-pass type I membrane protein

Tissue Location

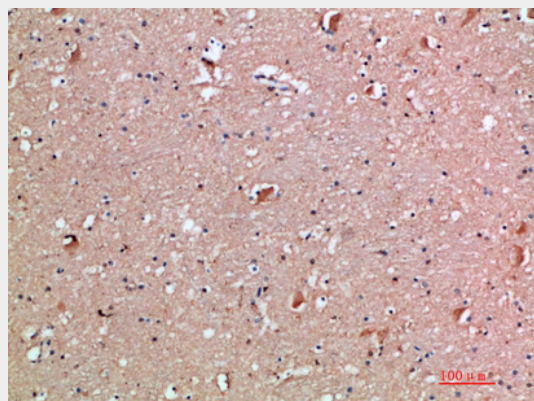
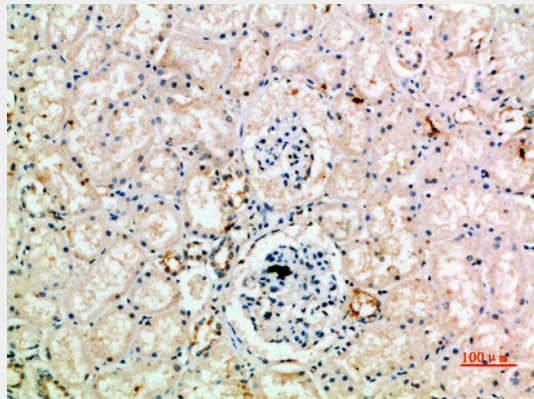
Detected in adrenal gland, bone marrow, brain, fetal brain, fetal liver, heart, kidney, lung, liver, peripheral blood leukocytes, placenta, prostate, salivary gland, skeletal muscle, spinal cord, testis, thymus, thyroid, trachea and uterus (PubMed:17897836) Strongly expressed in peripheral blood leukocytes and spleen and, to a lesser extent, in colon (PubMed:9792649). Specifically coexpressed with IL18R1 in T-helper 1 (Th1) cells (PubMed:10653850, PubMed:10925275, PubMed:11046021).

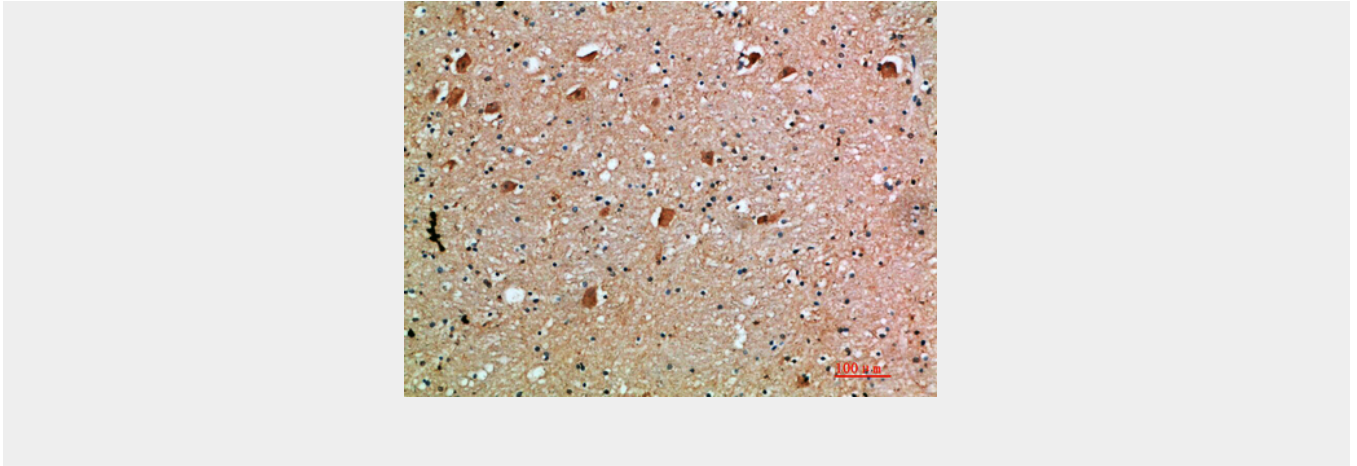
CD218b Polyclonal Antibody - Protocols

Provided below are standard protocols that you may find useful for product applications.

- [Western Blot](#)
- [Blocking Peptides](#)
- [Dot Blot](#)
- [Immunohistochemistry](#)
- [Immunofluorescence](#)
- [Immunoprecipitation](#)
- [Flow Cytometry](#)
- [Cell Culture](#)

CD218b Polyclonal Antibody - Images





CD218b Polyclonal Antibody - Background

Within the IL18 receptor complex, does not mediate IL18- binding, but involved in IL18-dependent signal transduction, leading to NF-kappa-B and JNK activation (PubMed:9792649, PubMed:14528293, PubMed:25500532). May play a role in IL18- mediated IFNG synthesis from T-helper 1 (Th1) cells (Probable).