

**Integrin  $\alpha$ X Polyclonal Antibody**  
Catalog # AP74107**Specification**

---

**Integrin  $\alpha$ X Polyclonal Antibody - Product Information**

Application	IHC
Primary Accession	<a href="#">P20702</a>
Reactivity	Human
Host	Rabbit
Clonality	Polyclonal

**Integrin  $\alpha$ X Polyclonal Antibody - Additional Information****Gene ID** 3687**Other Names**

Integrin alpha-X (CD11 antigen-like family member C) (Leu M5) (Leukocyte adhesion glycoprotein p150, 95 alpha chain) (Leukocyte adhesion receptor p150, 95) (CD antigen CD11c)

**Dilution**

IHC~~IHC-p 1:50-200, ELISA 1:10000-20000

**Format**

Liquid in PBS containing 50% glycerol, 0.5% BSA and 0.09% (W/V) sodium azide.

**Storage Conditions**

-20°C

**Integrin  $\alpha$ X Polyclonal Antibody - Protein Information****Name** ITGAX**Synonyms** CD11C**Function**

Integrin alpha-X/beta-2 is a receptor for fibrinogen. It recognizes the sequence G-P-R in fibrinogen. It mediates cell-cell interaction during inflammatory responses. It is especially important in monocyte adhesion and chemotaxis.

**Cellular Location**

Membrane; Single-pass type I membrane protein.

**Tissue Location**

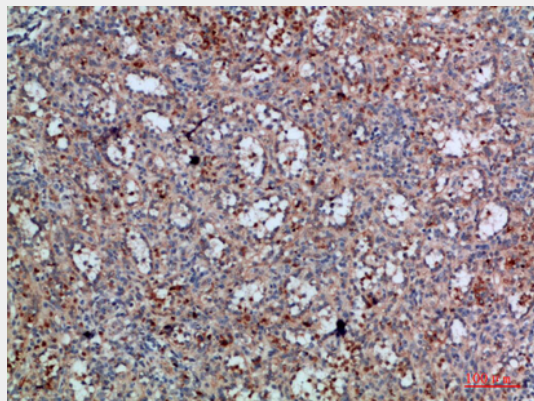
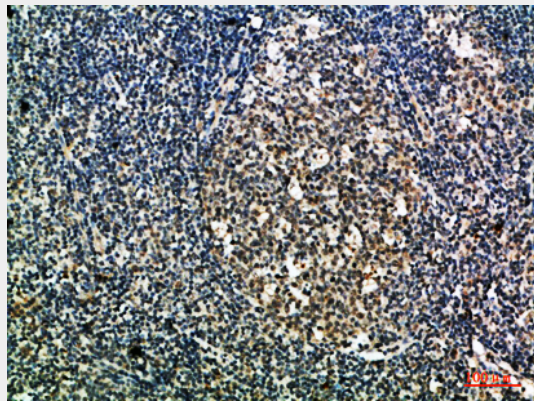
Predominantly expressed in monocytes and granulocytes

**Integrin  $\alpha$ X Polyclonal Antibody - Protocols**

Provided below are standard protocols that you may find useful for product applications.

- [Western Blot](#)
- [Blocking Peptides](#)
- [Dot Blot](#)
- [Immunohistochemistry](#)
- [Immunofluorescence](#)
- [Immunoprecipitation](#)
- [Flow Cytometry](#)
- [Cell Culture](#)

### **Integrin $\alpha$ X Polyclonal Antibody - Images**



### **Integrin $\alpha$ X Polyclonal Antibody - Background**

Integrin alpha-X/beta-2 is a receptor for fibrinogen. It recognizes the sequence G-P-R in fibrinogen. It mediates cell-cell interaction during inflammatory responses. It is especially important in monocyte adhesion and chemotaxis.