

CD11b Polyclonal Antibody
Catalog # AP74106**Specification****CD11b Polyclonal Antibody - Product Information**

Application	IHC
Primary Accession	P11215
Reactivity	Human
Host	Rabbit
Clonality	Polyclonal

CD11b Polyclonal Antibody - Additional Information**Gene ID** 3684**Other Names**

Integrin alpha-M (CD11 antigen-like family member B) (CR-3 alpha chain) (Cell surface glycoprotein MAC-1 subunit alpha) (Leukocyte adhesion receptor MO1) (Neutrophil adherence receptor) (CD antigen CD11b)

Dilution

IHC~~IHC-p 1:50-200, ELISA 1:10000-20000

Format

Liquid in PBS containing 50% glycerol, 0.5% BSA and 0.09% (W/V) sodium azide.

Storage Conditions

-20°C

CD11b Polyclonal Antibody - Protein Information**Name** ITGAM**Synonyms** CD11B, CR3A**Function**

Integrin ITGAM/ITGB2 is implicated in various adhesive interactions of monocytes, macrophages and granulocytes as well as in mediating the uptake of complement-coated particles and pathogens (PubMed: [20008295](http://www.uniprot.org/citations/20008295), PubMed: [9558116](http://www.uniprot.org/citations/9558116)). It is identical with CR-3, the receptor for the iC3b fragment of the third complement component. It probably recognizes the R-G-D peptide in C3b. Integrin ITGAM/ITGB2 is also a receptor for fibrinogen, factor X and ICAM1. It recognizes P1 and P2 peptides of fibrinogen gamma chain. Regulates neutrophil migration (PubMed: [28807980](http://www.uniprot.org/citations/28807980)). In association with beta subunit ITGB2/CD18, required for CD177-PRTN3-mediated activation of TNF primed neutrophils (PubMed: [21193407](http://www.uniprot.org/citations/21193407)). May regulate phagocytosis-induced apoptosis in extravasated

neutrophils (By similarity). May play a role in mast cell development (By similarity). Required with TYROBP/DAP12 in microglia to control production of microglial superoxide ions which promote the neuronal apoptosis that occurs during brain development (By similarity).

Cellular Location

Cell membrane; Single-pass type I membrane protein. Membrane raft; Single-pass type I membrane protein

Tissue Location

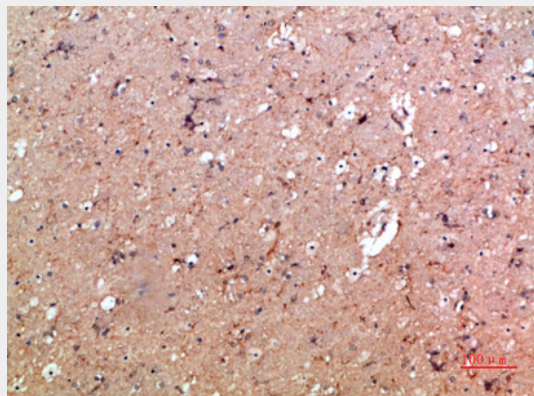
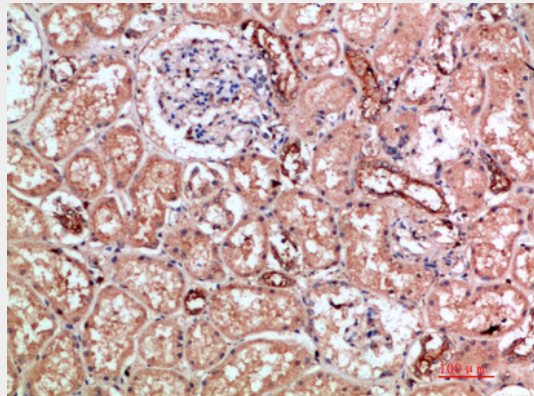
Predominantly expressed in monocytes and granulocytes (PubMed:1346576). Expressed in neutrophils (at protein level) (PubMed:21193407).

CD11b Polyclonal Antibody - Protocols

Provided below are standard protocols that you may find useful for product applications.

- [Western Blot](#)
- [Blocking Peptides](#)
- [Dot Blot](#)
- [Immunohistochemistry](#)
- [Immunofluorescence](#)
- [Immunoprecipitation](#)
- [Flow Cytometry](#)
- [Cell Culture](#)

CD11b Polyclonal Antibody - Images



CD11b Polyclonal Antibody - Background

Integrin ITGAM/ITGB2 is implicated in various adhesive interactions of monocytes, macrophages and granulocytes as well as in mediating the uptake of complement-coated particles and pathogens (PubMed:9558116, PubMed:20008295). It is identical with CR-3, the receptor for the iC3b fragment of the third complement component. It probably recognizes the R-G-D peptide in C3b. Integrin ITGAM/ITGB2 is also a receptor for fibrinogen, factor X and ICAM1. It recognizes P1 and P2 peptides of fibrinogen gamma chain. Regulates neutrophil migration (PubMed:28807980). In association with beta subunit ITGB2/CD18, required for CD177- PRTN3-mediated activation of TNF primed neutrophils (PubMed:21193407). May regulate phagocytosis-induced apoptosis in extravasated neutrophils (By similarity). May play a role in mast cell development (By similarity).