

CD1B Polyclonal Antibody Catalog # AP74105

Specification

CD1B Polyclonal Antibody - Product Information

Application	IHC
Primary Accession	P29016
Reactivity	Human
Host	Rabbit
Clonality	Polyclonal

CD1B Polyclonal Antibody - Additional Information

Gene ID 910

Other Names

T-cell surface glycoprotein CD1b (CD antigen CD1b)

Dilution

IHC~~IHC-p 1:50-200, ELISA 1:10000-20000

Format

Liquid in PBS containing 50% glycerol, 0.5% BSA and 0.09% (W/V) sodium azide.

Storage Conditions

-20°C

CD1B Polyclonal Antibody - Protein Information

Name CD1B

Function

Antigen-presenting protein that binds self and non-self lipid and glycolipid antigens and presents them to T-cell receptors on natural killer T-cells.

Cellular Location

Cell membrane; Single-pass type I membrane protein. Endosome membrane; Single-pass type I membrane protein. Lysosome membrane; Single-pass type I membrane protein. Note=Subject to intracellular trafficking between the cell membrane, endosomes and lysosomes.

Tissue Location

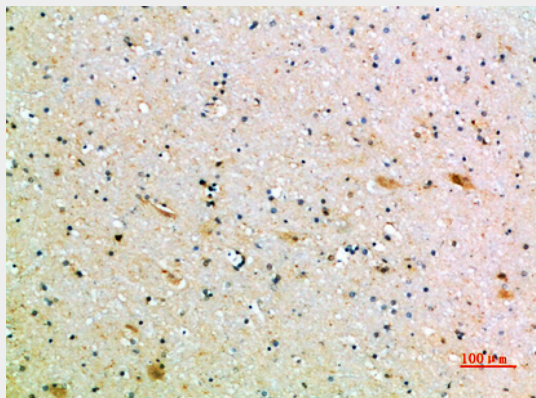
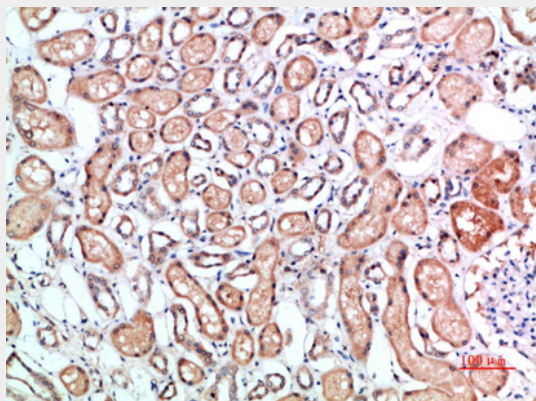
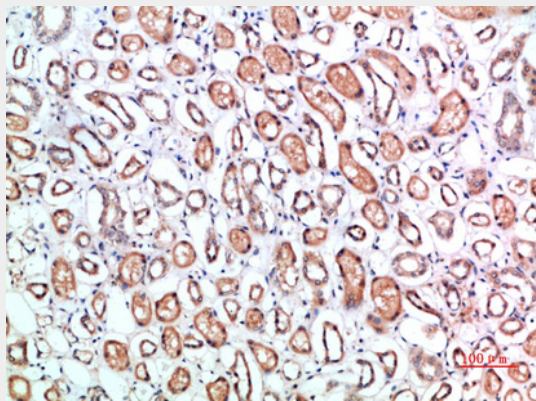
Expressed on cortical thymocytes, on certain T-cell leukemias, and in various other tissues

CD1B Polyclonal Antibody - Protocols

Provided below are standard protocols that you may find useful for product applications.

- [Western Blot](#)
- [Blocking Peptides](#)
- [Dot Blot](#)
- [Immunohistochemistry](#)
- [Immunofluorescence](#)
- [Immunoprecipitation](#)
- [Flow Cytometry](#)
- [Cell Culture](#)

CD1B Polyclonal Antibody - Images



CD1B Polyclonal Antibody - Background

Antigen-presenting protein that binds self and non-self lipid and glycolipid antigens and presents them to T-cell receptors on natural killer T-cells.