

**FSH $\beta$  Polyclonal Antibody**  
Catalog # AP74092**Specification**

---

**FSH $\beta$  Polyclonal Antibody - Product Information**

Application	IHC
Primary Accession	<a href="#">P01225</a>
Reactivity	Human, Mouse, Rat
Host	Rabbit
Clonality	Polyclonal

**FSH $\beta$  Polyclonal Antibody - Additional Information****Gene ID** 2488**Other Names**

Follitropin subunit beta (Follicle-stimulating hormone beta subunit) (FSH-B) (FSH-beta) (Follitropin beta chain)

**Dilution**

IHC~~IHC-p 1:50-200, ELISA 1:10000-20000

**Format**

Liquid in PBS containing 50% glycerol, 0.5% BSA and 0.09% (W/V) sodium azide.

**Storage Conditions**

-20°C

**FSH $\beta$  Polyclonal Antibody - Protein Information****Name** FSHB**Function**

Together with the alpha chain CGA constitutes follitropin, the follicle-stimulating hormone, and provides its biological specificity to the hormone heterodimer. Binds FSHR, a G protein-coupled receptor, on target cells to activate downstream signaling pathways (PubMed:<a href="http://www.uniprot.org/citations/24692546" target="\_blank">24692546</a>, PubMed:<a href="http://www.uniprot.org/citations/2494176" target="\_blank">2494176</a>). Follitropin is involved in follicle development and spermatogenesis in reproductive organs (PubMed:<a href="http://www.uniprot.org/citations/407105" target="\_blank">407105</a>, PubMed:<a href="http://www.uniprot.org/citations/8220432" target="\_blank">8220432</a>).

**Cellular Location**

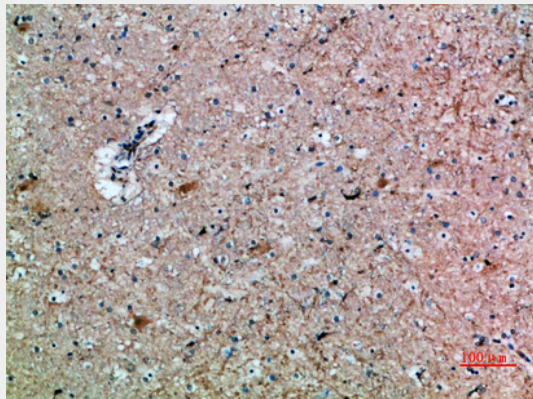
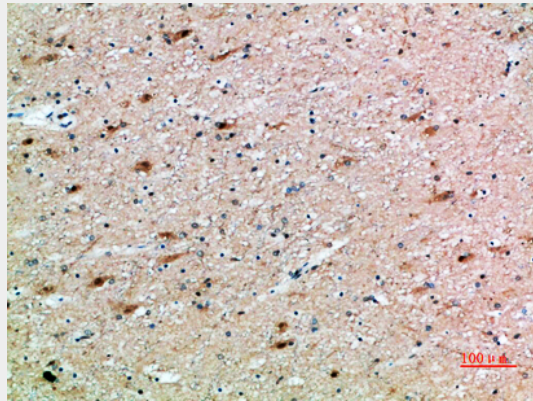
Secreted. Note=Efficient secretion requires dimerization with CGA

**FSH $\beta$  Polyclonal Antibody - Protocols**

Provided below are standard protocols that you may find useful for product applications.

- [Western Blot](#)
- [Blocking Peptides](#)
- [Dot Blot](#)
- [Immunohistochemistry](#)
- [Immunofluorescence](#)
- [Immunoprecipitation](#)
- [Flow Cytometry](#)
- [Cell Culture](#)

### **FSH $\beta$ Polyclonal Antibody - Images**



### **FSH $\beta$ Polyclonal Antibody - Background**

Together with the alpha chain CGA constitutes follitropin, the follicle-stimulating hormone, and provides its biological specificity to the hormone heterodimer. Binds FSHR, a G protein-coupled receptor, on target cells to activate downstream signaling pathways (PubMed:2494176, PubMed:24692546). Follitropin is involved in follicle development and spermatogenesis in reproductive organs (PubMed:407105, PubMed:8220432).