

**CD64 Polyclonal Antibody**  
Catalog # AP74072**Specification**

---

**CD64 Polyclonal Antibody - Product Information**

Application	<b>WB</b>
Primary Accession	<a href="#">P12314</a>
Reactivity	<b>Human</b>
Host	<b>Rabbit</b>
Clonality	<b>Polyclonal</b>

**CD64 Polyclonal Antibody - Additional Information****Gene ID** 2209**Other Names**High affinity immunoglobulin gamma Fc receptor I (IgG Fc receptor I) (Fc-gamma RI) (FcRI)  
(Fc-gamma RIA) (FcgammaRIa) (CD antigen CD64)**Dilution**

WB~~WB 1:500-2000,IHC-p 1:500-200, ELISA 1:10000-20000

**Format**

Liquid in PBS containing 50% glycerol, 0.5% BSA and 0.09% (W/V) sodium azide.

**Storage Conditions**

-20°C

**CD64 Polyclonal Antibody - Protein Information****Name** FCGR1A**Synonyms** FCG1, FCGR1, IGFR1**Function**

High affinity receptor for the Fc region of immunoglobulins gamma. Functions in both innate and adaptive immune responses. Mediates IgG effector functions on monocytes triggering antibody-dependent cellular cytotoxicity (ADCC) of virus-infected cells.

**Cellular Location**

Cell membrane; Single-pass type I membrane protein Note=Stabilized at the cell membrane through interaction with FCER1G

**Tissue Location**

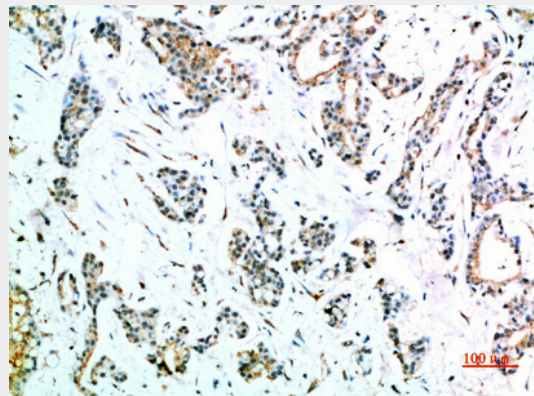
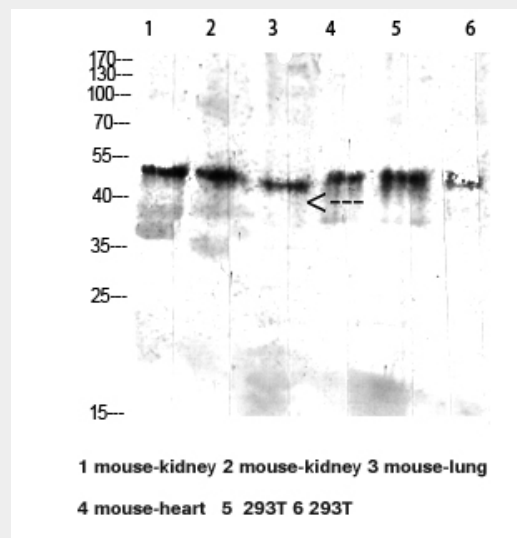
Monocyte/macrophage specific.

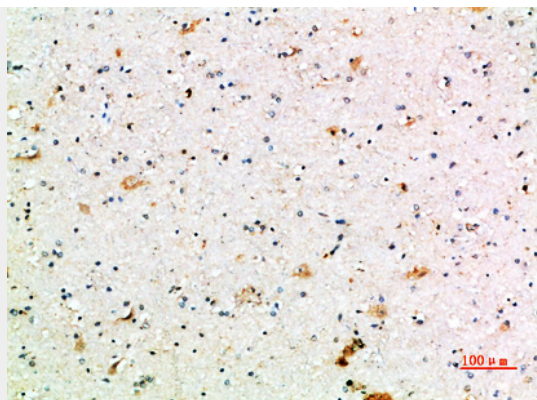
## CD64 Polyclonal Antibody - Protocols

Provided below are standard protocols that you may find useful for product applications.

- [Western Blot](#)
- [Blocking Peptides](#)
- [Dot Blot](#)
- [Immunohistochemistry](#)
- [Immunofluorescence](#)
- [Immunoprecipitation](#)
- [Flow Cytometry](#)
- [Cell Culture](#)

## CD64 Polyclonal Antibody - Images





### **CD64 Polyclonal Antibody - Background**

High affinity receptor for the Fc region of immunoglobulins gamma. Functions in both innate and adaptive immune responses.