

**Cystatin A Polyclonal Antibody**  
Catalog # AP74059**Specification**

---

**Cystatin A Polyclonal Antibody - Product Information**

Application	<b>WB</b>
Primary Accession	<a href="#">P01040</a>
Reactivity	<b>Human</b>
Host	<b>Rabbit</b>
Clonality	<b>Polyclonal</b>

**Cystatin A Polyclonal Antibody - Additional Information****Gene ID** 1475**Other Names**

Cystatin-A (Cystatin-AS) (Stefin-A)

**Dilution**

WB~~WB 1:500-2000,IHC-p 1:500-200, ELISA 1:10000-20000

**Format**

Liquid in PBS containing 50% glycerol, 0.5% BSA and 0.09% (W/V) sodium azide.

**Storage Conditions**

-20°C

**Cystatin A Polyclonal Antibody - Protein Information****Name** CSTA**Synonyms** STF1, STFA**Function**

This is an intracellular thiol proteinase inhibitor. Has an important role in desmosome-mediated cell-cell adhesion in the lower levels of the epidermis.

**Cellular Location**

Cytoplasm.

**Tissue Location**

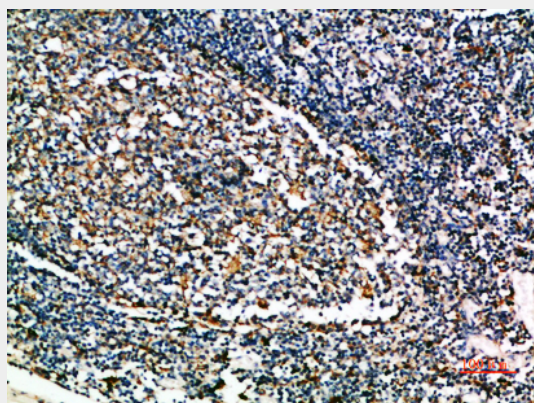
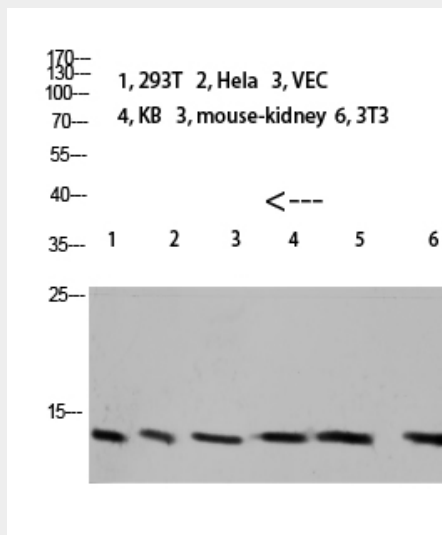
Expressed in the skin throughout the epidermis.

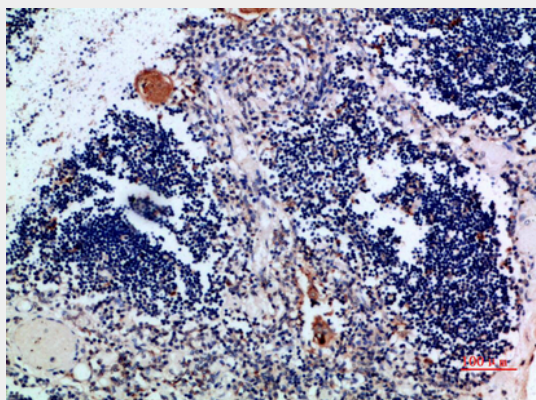
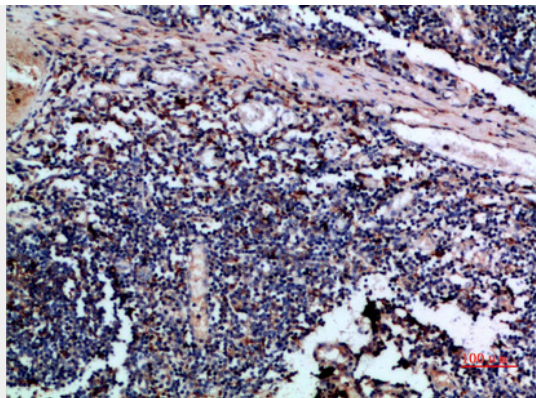
**Cystatin A Polyclonal Antibody - Protocols**

Provided below are standard protocols that you may find useful for product applications.

- [Western Blot](#)
- [Blocking Peptides](#)
- [Dot Blot](#)
- [Immunohistochemistry](#)
- [Immunofluorescence](#)
- [Immunoprecipitation](#)
- [Flow Cytometry](#)
- [Cell Culture](#)

### Cystatin A Polyclonal Antibody - Images





### **Cystatin A Polyclonal Antibody - Background**

This is an intracellular thiol proteinase inhibitor. Has an important role in desmosome-mediated cell-cell adhesion in the lower levels of the epidermis.