

Calcitonin Polyclonal Antibody
Catalog # AP74046**Specification****Calcitonin Polyclonal Antibody - Product Information**

Application	IHC
Primary Accession	P01258
Reactivity	Human
Host	Rabbit
Clonality	Polyclonal

Calcitonin Polyclonal Antibody - Additional Information**Gene ID** 796**Other Names**

Calcitonin [Cleaved into: Calcitonin; Katalcalcin (Calcitonin carboxyl-terminal peptide) (CCP) (PDN-21)]

Dilution

IHC~~IHC-p: 100-300.WB 1:500-2000, ELISA 1:10000-20000

Format

Liquid in PBS containing 50% glycerol, 0.5% BSA and 0.09% (W/V) sodium azide.

Storage Conditions

-20°C

Calcitonin Polyclonal Antibody - Protein Information**Name** CALCA ([HGNC:1437](#))**Synonyms** CALC1**Function**

[Calcitonin]: Calcitonin is a peptide hormone that causes a rapid but short-lived drop in the level of calcium and phosphate in blood by promoting the incorporation of those ions in the bones. Calcitonin function is mediated by the calcitonin receptor/CALCR and the CALCR-RAMP2 (AMXR2) receptor complex (PubMed:35324283).

Cellular Location

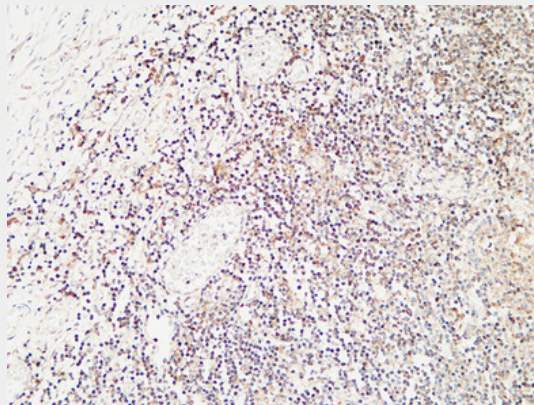
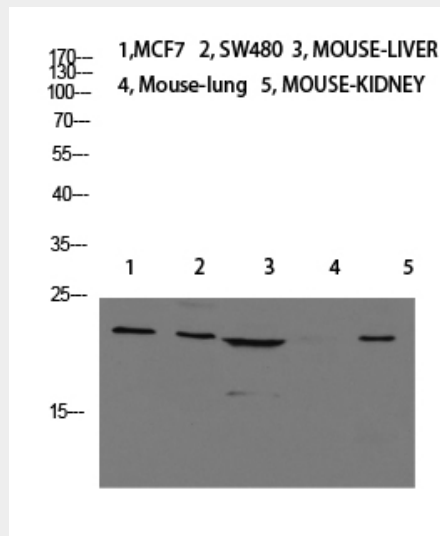
Secreted.

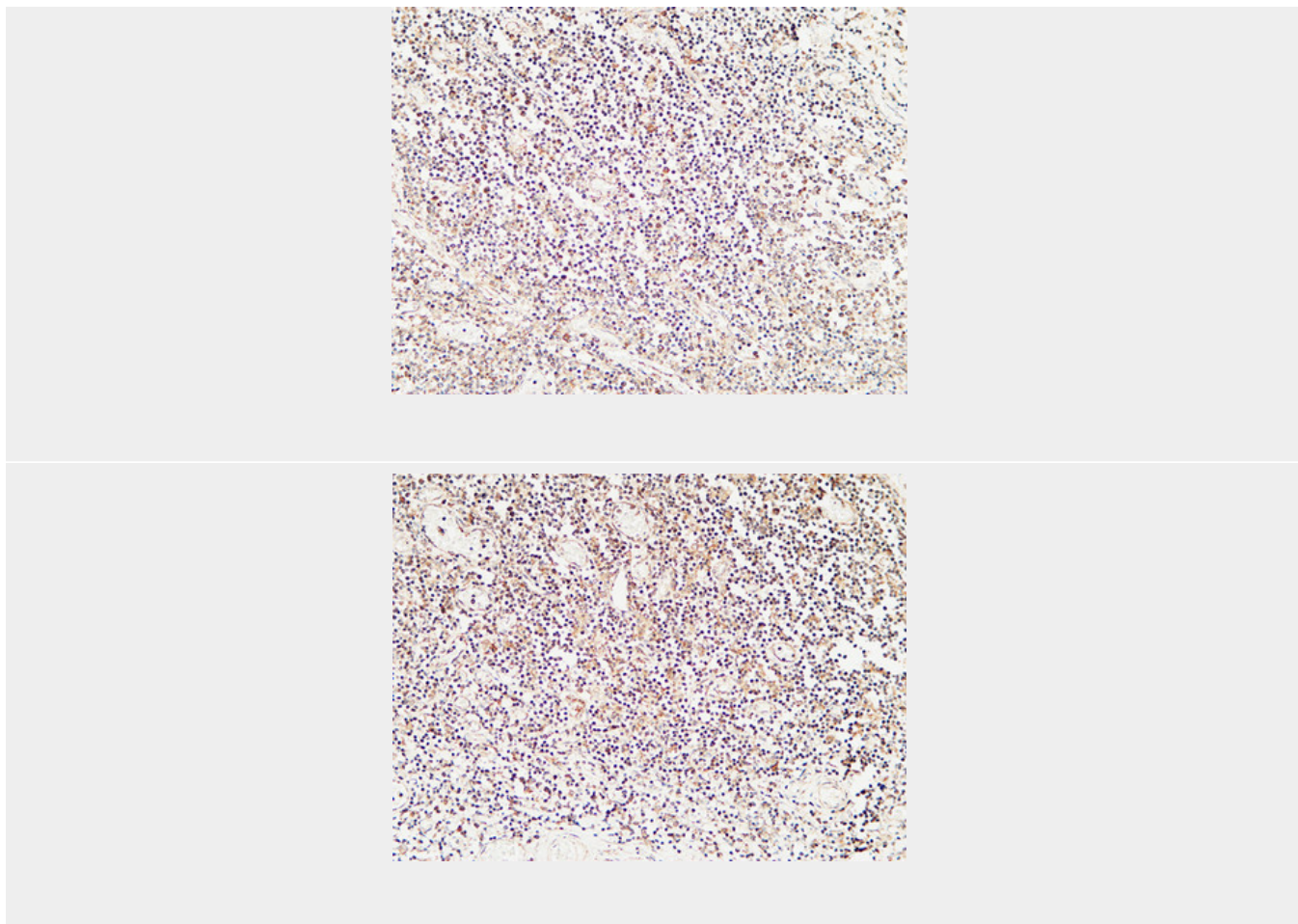
Calcitonin Polyclonal Antibody - Protocols

Provided below are standard protocols that you may find useful for product applications.

- [Western Blot](#)
- [Blocking Peptides](#)
- [Dot Blot](#)
- [Immunohistochemistry](#)
- [Immunofluorescence](#)
- [Immunoprecipitation](#)

Calcitonin Polyclonal Antibody - Images





Calcitonin Polyclonal Antibody - Background

Calcitonin causes a rapid but short-lived drop in the level of calcium and phosphate in blood by promoting the incorporation of those ions in the bones.