

**CYCS Polyclonal Antibody**  
Catalog # AP74029**Specification**

---

**CYCS Polyclonal Antibody - Product Information**

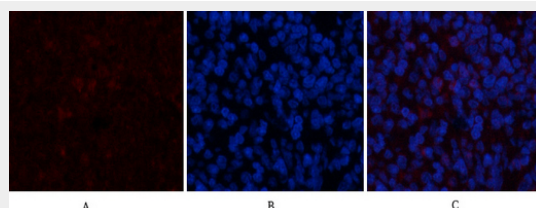
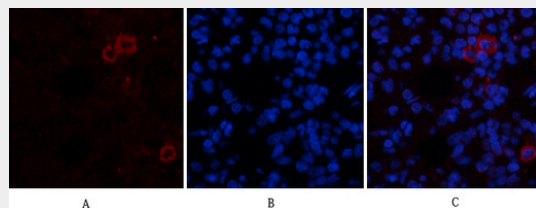
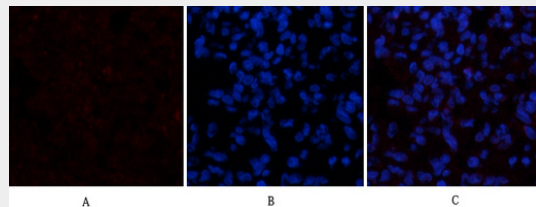
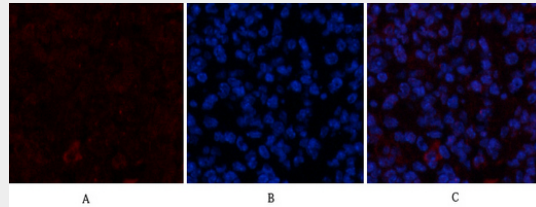
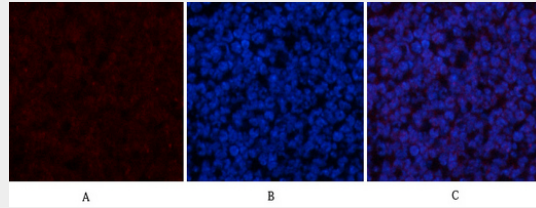
Application	IF
Primary Accession	<a href="#">P99999</a>
Reactivity	Human, Mouse, Rat
Host	Rabbit
Clonality	Polyclonal

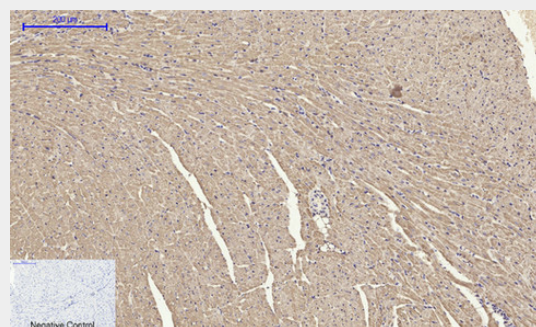
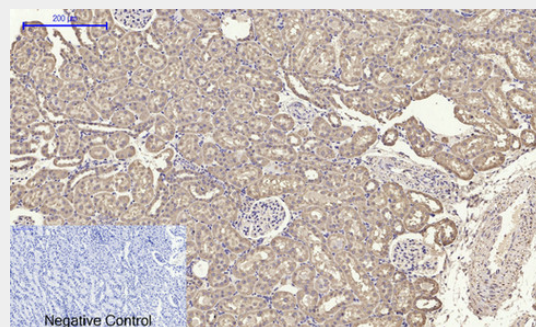
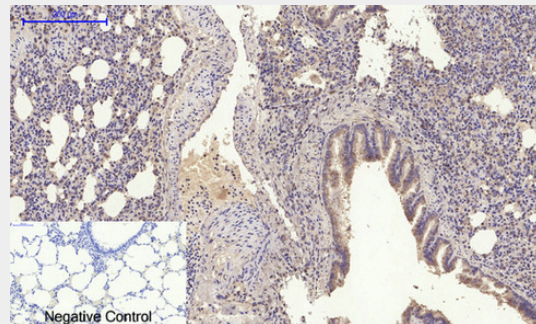
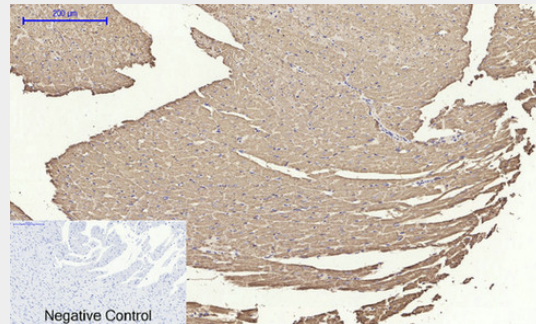
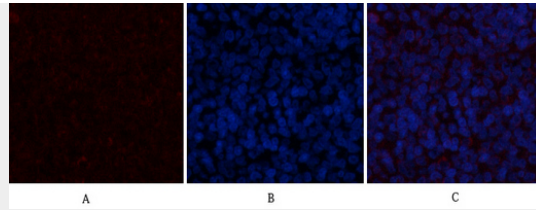
**CYCS Polyclonal Antibody - Additional Information****Gene ID** 54205**Other Names**  
Cytochrome c**Dilution**  
IF~~IF: 1:50-200 WB 1:500-2000,IHC-p 1:500-200, ELISA 1:10000-20000**Format**  
Liquid in PBS containing 50% glycerol, 0.5% BSA and 0.09% (W/V) sodium azide.**Storage Conditions**  
-20°C**CYCS Polyclonal Antibody - Protein Information****Name** CYCS**Synonyms** CYC**Function**  
Electron carrier protein. The oxidized form of the cytochrome c heme group can accept an electron from the heme group of the cytochrome c1 subunit of cytochrome reductase. Cytochrome c then transfers this electron to the cytochrome oxidase complex, the final protein carrier in the mitochondrial electron-transport chain.**Cellular Location**  
Mitochondrion intermembrane space. Note=Loosely associated with the inner membrane**CYCS Polyclonal Antibody - Protocols**

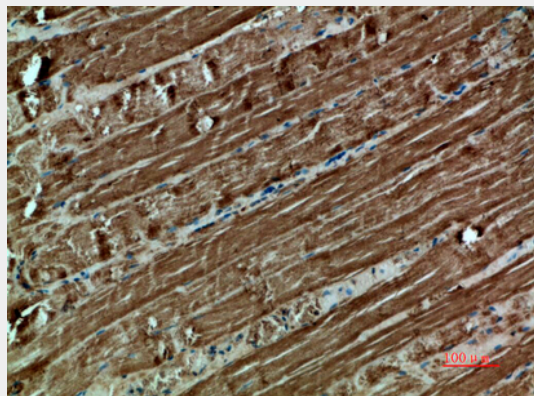
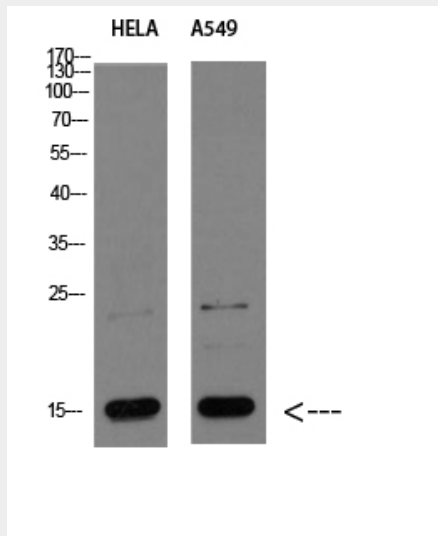
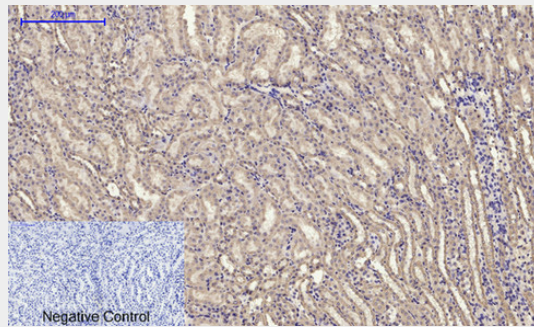
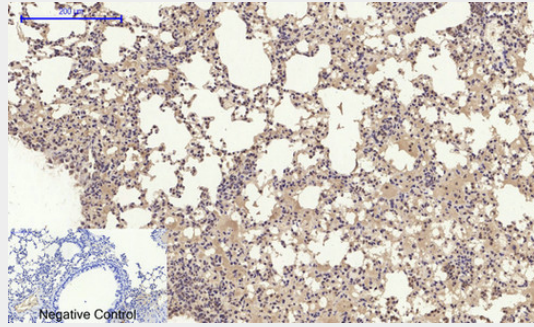
Provided below are standard protocols that you may find useful for product applications.

- [Western Blot](#)
- [Blocking Peptides](#)
- [Dot Blot](#)
- [Immunohistochemistry](#)
- [Immunofluorescence](#)
- [Immunoprecipitation](#)
- [Flow Cytometry](#)
- [Cell Culture](#)

### CYCS Polyclonal Antibody - Images







### **CYCS Polyclonal Antibody - Background**

Electron carrier protein. The oxidized form of the cytochrome c heme group can accept an electron from the heme group of the cytochrome c1 subunit of cytochrome reductase. Cytochrome c then transfers this electron to the cytochrome oxidase complex, the final protein carrier in the mitochondrial electron-transport chain.