

MBL-C Polyclonal Antibody
Catalog # AP74003**Specification**

MBL-C Polyclonal Antibody - Product Information

Application	WB
Primary Accession	P11226
Reactivity	Human, Mouse
Host	Rabbit
Clonality	Polyclonal

MBL-C Polyclonal Antibody - Additional Information**Gene ID** 4153**Other Names**

MBL2 COLEC1 MBL

Dilution

WB~~WB 1:500-2000, ELISA 1:10000-20000

Format

Liquid in PBS containing 50% glycerol, 0.5% BSA and 0.09% (W/V) sodium azide.

Storage Conditions

-20°C

MBL-C Polyclonal Antibody - Protein Information**Name** MBL2 ([HGNC:6922](#))**Synonyms** COLEC1, MBL**Function**

Calcium-dependent lectin involved in innate immune defense (PubMed:35102342). Binds mannose, fucose and N-acetylglucosamine on different microorganisms and activates the lectin complement pathway. Binds to late apoptotic cells, as well as to apoptotic blebs and to necrotic cells, but not to early apoptotic cells, facilitating their uptake by macrophages. May bind DNA. Upon SARS coronavirus-2/SARS-CoV-2 infection, activates the complement lectin pathway which leads to the inhibition SARS-CoV-2 infection and a reduction of the induced inflammatory response (PubMed:35102342).

Cellular Location

Secreted.

Tissue Location

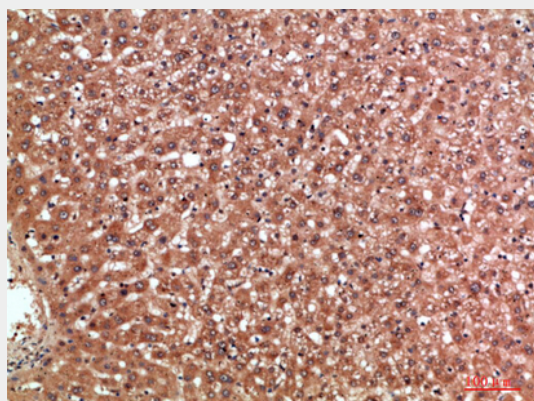
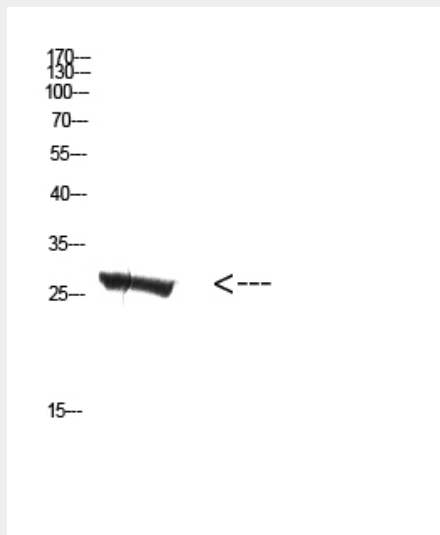
Plasma protein produced mainly in the liver.

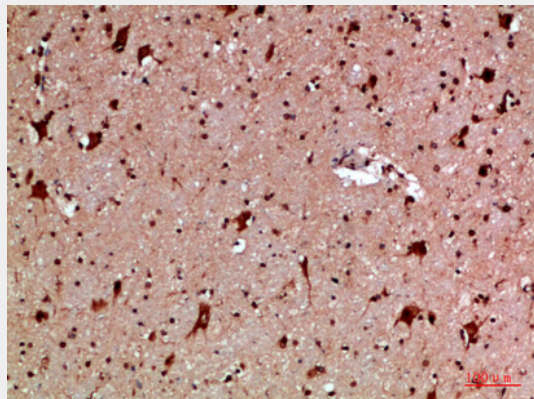
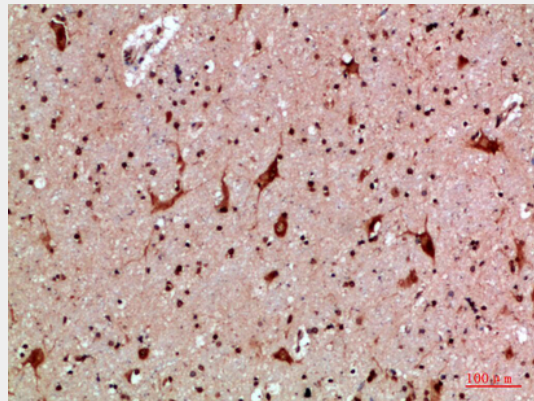
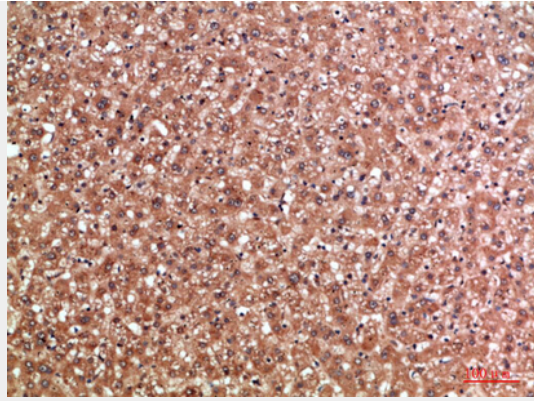
MBL-C Polyclonal Antibody - Protocols

Provided below are standard protocols that you may find useful for product applications.

- [Western Blot](#)
- [Blocking Peptides](#)
- [Dot Blot](#)
- [Immunohistochemistry](#)
- [Immunofluorescence](#)
- [Immunoprecipitation](#)
- [Flow Cytometry](#)
- [Cell Culture](#)

MBL-C Polyclonal Antibody - Images





MBL-C Polyclonal Antibody - Background

Calcium-dependent lectin involved in innate immune defense. Binds mannose, fucose and N-acetylglucosamine on different microorganisms and activates the lectin complement pathway. Binds to late apoptotic cells, as well as to apoptotic blebs and to necrotic cells, but not to early apoptotic cells, facilitating their uptake by macrophages. May bind DNA.