

RCC1 Polyclonal Antibody
Catalog # AP73997**Specification**

RCC1 Polyclonal Antibody - Product Information

Application	WB
Primary Accession	P18754
Reactivity	Human, Mouse, Rat
Host	Rabbit
Clonality	Polyclonal

RCC1 Polyclonal Antibody - Additional Information

Gene ID 1104

Other Names
RCC1 CHC1**Dilution**
WB~~WB 1:500-2000, ELISA 1:10000-20000**Format**
Liquid in PBS containing 50% glycerol, 0.5% BSA and 0.09% (W/V) sodium azide.**Storage Conditions**
-20°C**RCC1 Polyclonal Antibody - Protein Information****Name** RCC1**Synonyms** CHC1**Function**

Guanine-nucleotide releasing factor that promotes the exchange of Ran-bound GDP by GTP, and thereby plays an important role in RAN-mediated functions in nuclear import and mitosis (PubMed: [11336674](http://www.uniprot.org/citations/11336674), PubMed: [17435751](http://www.uniprot.org/citations/17435751), PubMed: [1944575](http://www.uniprot.org/citations/1944575), PubMed: [20668449](http://www.uniprot.org/citations/20668449), PubMed: [22215983](http://www.uniprot.org/citations/22215983), PubMed: [29042532](http://www.uniprot.org/citations/29042532)). Contributes to the generation of high levels of chromosome-associated, GTP-bound RAN, which is important for mitotic spindle assembly and normal progress through mitosis (PubMed: [12194828](http://www.uniprot.org/citations/12194828), PubMed: [17435751](http://www.uniprot.org/citations/17435751), PubMed: [22215983](http://www.uniprot.org/citations/22215983)). Via its role in maintaining high levels of GTP-bound RAN in the nucleus, contributes to the release of cargo

proteins from importins after nuclear import (PubMed:22215983). Involved in the regulation of onset of chromosome condensation in the S phase (PubMed:3678831). Binds both to the nucleosomes and double-stranded DNA (PubMed:17435751, PubMed:18762580).

Cellular Location

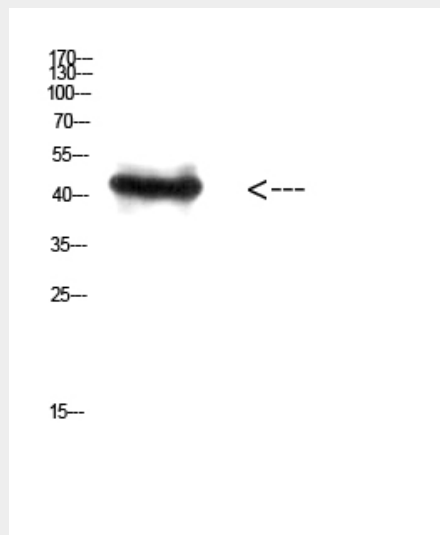
Nucleus. Chromosome. Cytoplasm Note=Predominantly nuclear in interphase cells (PubMed:12194828). Binds to mitotic chromosomes (PubMed:12194828, PubMed:17435751, PubMed:20668449).

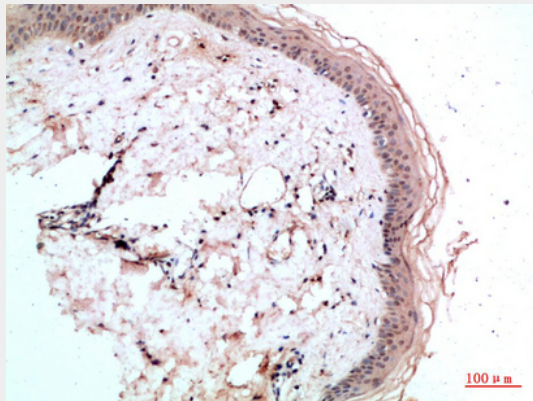
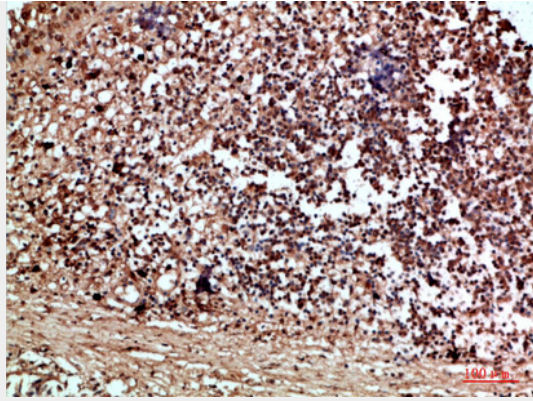
RCC1 Polyclonal Antibody - Protocols

Provided below are standard protocols that you may find useful for product applications.

- [Western Blot](#)
- [Blocking Peptides](#)
- [Dot Blot](#)
- [Immunohistochemistry](#)
- [Immunofluorescence](#)
- [Immunoprecipitation](#)
- [Flow Cytometry](#)
- [Cell Culture](#)

RCC1 Polyclonal Antibody - Images





RCC1 Polyclonal Antibody - Background

Guanine-nucleotide releasing factor that promotes the exchange of Ran-bound GDP by GTP, and thereby plays an important role in RAN-mediated functions in nuclear import and mitosis (PubMed:1944575, PubMed:17435751, PubMed:20668449, PubMed:22215983, PubMed:11336674). Contributes to the generation of high levels of chromosome-associated, GTP-bound RAN, which is important for mitotic spindle assembly and normal progress through mitosis (PubMed:12194828, PubMed:17435751, PubMed:22215983). Via its role in maintaining high levels of GTP-bound RAN in the nucleus, contributes to the release of cargo proteins from importins after nuclear import (PubMed:22215983). Involved in the regulation of onset of chromosome condensation in the S phase (PubMed:3678831). Binds both to the nucleosomes and double-stranded DNA (PubMed:17435751, PubMed:18762580).