

**CREB3 Polyclonal Antibody**  
Catalog # AP73986**Specification****CREB3 Polyclonal Antibody - Product Information**

Application	<b>WB</b>
Primary Accession	<a href="#">O43889</a>
Reactivity	<b>Human, Mouse, Rat</b>
Host	<b>Rabbit</b>
Clonality	<b>Polyclonal</b>

**CREB3 Polyclonal Antibody - Additional Information****Gene ID** 10488**Other Names**

Cyclic AMP-responsive element-binding protein 3 (CREB-3) (cAMP-responsive element-binding protein 3) (Leucin zipper protein) (Luman) (Transcription factor LZIP-alpha) [Cleaved into: Processed cyclic AMP-responsive element-binding protein 3 (N-terminal Luman) (Transcriptionally active form)]

**Dilution**

WB~~WB 1:500-2000, ELISA 1:10000-20000

**Format**

Liquid in PBS containing 50% glycerol, 0.5% BSA and 0.09% (W/V) sodium azide.

**Storage Conditions**

-20°C

**CREB3 Polyclonal Antibody - Protein Information****Name** CREB3**Synonyms** LZIP**Function**

Endoplasmic reticulum (ER)-bound sequence-specific transcription factor that directly binds DNA and activates transcription (PubMed: [10984507](http://www.uniprot.org/citations/10984507), PubMed: [15845366](http://www.uniprot.org/citations/15845366), PubMed: [16940180](http://www.uniprot.org/citations/16940180), PubMed: [19779205](http://www.uniprot.org/citations/19779205), PubMed: [9271389](http://www.uniprot.org/citations/9271389)). Plays a role in the unfolded protein response (UPR), promoting cell survival versus ER stress-induced apoptotic cell death (PubMed: [15845366](http://www.uniprot.org/citations/15845366), PubMed: [16940180](http://www.uniprot.org/citations/16940180)). Also involved in cell proliferation, migration and differentiation, tumor suppression and inflammatory gene

expression. Acts as a positive regulator of LKN- 1/CCL15-induced chemotaxis signaling of leukocyte cell migration (PubMed:<a href="http://www.uniprot.org/citations/15001559" target="\_blank">15001559</a>, PubMed:<a href="http://www.uniprot.org/citations/17296613" target="\_blank">17296613</a>, PubMed:<a href="http://www.uniprot.org/citations/19779205" target="\_blank">19779205</a>). Associates with chromatin to the HERPUD1 promoter (PubMed:<a href="http://www.uniprot.org/citations/16940180" target="\_blank">16940180</a>). Also induces transcriptional activation of chemokine receptors (PubMed:<a href="http://www.uniprot.org/citations/17296613" target="\_blank">17296613</a>, PubMed:<a href="http://www.uniprot.org/citations/18587271" target="\_blank">18587271</a>).

### Cellular Location

[Isoform 1]: Endoplasmic reticulum membrane; Single-pass type II membrane protein {ECO:0000255, ECO:0000269|PubMed:12138176}. Golgi apparatus. Note=Colocalizes with HCFC1 in neuronal cell bodies of the trigeminal ganglia (PubMed:10623756). Colocalizes with DCSTAMP in the ER membrane of immature dendritic cell (DC) (PubMed:20546900). Colocalizes with CANX, CCR1, HCFC1 in the ER membrane (PubMed:10623756). [Isoform 2]: Nucleus. Cytoplasm Note=Predominantly in the nucleus (PubMed:19779205). Not associated with membranes (PubMed:19779205).

### Tissue Location

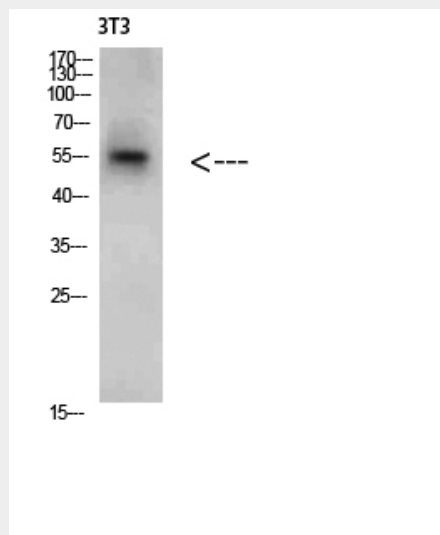
Ubiquitously expressed (PubMed:19779205, PubMed:9271389). Expressed in dendritic cells (DC). Weakly expressed in monocytes (at protein level) (PubMed:20546900)

## CREB3 Polyclonal Antibody - Protocols

Provided below are standard protocols that you may find useful for product applications.

- [Western Blot](#)
- [Blocking Peptides](#)
- [Dot Blot](#)
- [Immunohistochemistry](#)
- [Immunofluorescence](#)
- [Immunoprecipitation](#)
- [Flow Cytometry](#)
- [Cell Culture](#)

## CREB3 Polyclonal Antibody - Images



### **CREB3 Polyclonal Antibody - Background**

Endoplasmic reticulum (ER)-bound sequence-specific transcription factor that directly binds DNA and activates transcription (PubMed:9271389, PubMed:19779205, PubMed:10984507, PubMed:15845366, PubMed:16940180). Plays a role in the unfolded protein response (UPR), promoting cell survival versus ER stress- induced apoptotic cell death (PubMed:15845366, PubMed:16940180). Also involved in cell proliferation, migration and differentiation, tumor suppression and inflammatory gene expression. Acts as a positive regulator of LKN-1/CCL15-induced chemotaxis signaling of leukocyte cell migration (PubMed:19779205, PubMed:15001559, PubMed:17296613). Associates with chromatin to the HERPUD1 promoter (PubMed:16940180). Also induces transcriptional activation of chemokine receptors (PubMed:18587271, PubMed:17296613).