

TRIF Polyclonal Antibody
Catalog # AP73966**Specification****TRIF Polyclonal Antibody - Product Information**

Application	WB
Primary Accession	Q8IUC6
Reactivity	Human
Host	Rabbit
Clonality	Polyclonal

TRIF Polyclonal Antibody - Additional Information**Gene ID** 148022**Other Names**

TIR domain-containing adapter molecule 1 (TICAM-1) (Proline-rich, vinculin and TIR domain-containing protein B) (Putative NF-kappa-B-activating protein 502H) (Toll-interleukin-1 receptor domain-containing adapter protein inducing interferon beta) (TIR domain-containing adapter protein inducing IFN-beta)

Dilution

WB~~WB 1:500-2000, ELISA 1:10000-20000

Format

Liquid in PBS containing 50% glycerol, 0.5% BSA and 0.09% (W/V) sodium azide.

Storage Conditions

-20°C

TRIF Polyclonal Antibody - Protein Information**Name** TICAM1**Synonyms** PRVTIRB, TRIF**Function**

Involved in innate immunity against invading pathogens. Adapter used by TLR3, TLR4 (through TICAM2) and TLR5 to mediate NF- kappa-B and interferon-regulatory factor (IRF) activation, and to induce apoptosis (PubMed:12471095, PubMed:12539043, PubMed:14739303, PubMed:28747347). Ligand binding to these receptors results in TRIF recruitment through its TIR domain (PubMed:12471095, PubMed:12539043, PubMed:14739303). Distinct protein-interaction motifs allow recruitment of the

effector proteins TBK1, TRAF6 and RIPK1, which in turn, lead to the activation of transcription factors IRF3 and IRF7, NF-kappa-B and FADD respectively (PubMed:12471095, PubMed:12539043, PubMed:14739303). Phosphorylation by TBK1 on the pLxIS motif leads to recruitment and subsequent activation of the transcription factor IRF3 to induce expression of type I interferon and exert a potent immunity against invading pathogens (PubMed:25636800). Component of a multi-helicase- TICAM1 complex that acts as a cytoplasmic sensor of viral double- stranded RNA (dsRNA) and plays a role in the activation of a cascade of antiviral responses including the induction of pro-inflammatory cytokines (By similarity).

Cellular Location

Cytoplasmic vesicle, autophagosome. Cytoplasm, cytosol {ECO:0000250|UniProtKB:Q80UF7}. Mitochondrion {ECO:0000250|UniProtKB:Q80UF7}. Note=Colocalizes with UBQLN1 in the autophagosome (PubMed:21695056). Colocalizes in the cytosol with DDX1, DDX21 and DHX36. Colocalizes in the mitochondria with DDX1 and poly(I:C) RNA ligand. The multi-helicase-TICAM1 complex may translocate to the mitochondria upon poly(I:C) RNA ligand stimulation (By similarity). {ECO:0000250|UniProtKB:Q80UF7, ECO:0000269|PubMed:21695056}

Tissue Location

Ubiquitously expressed but with higher levels in liver.

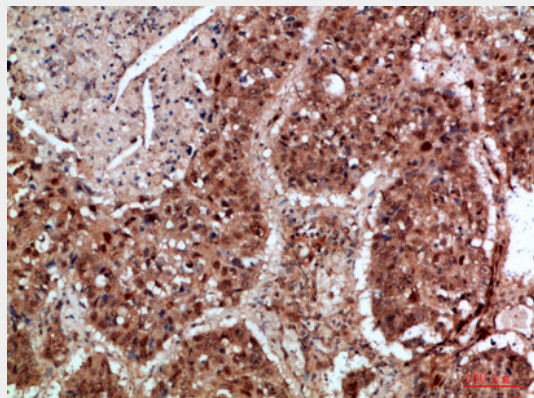
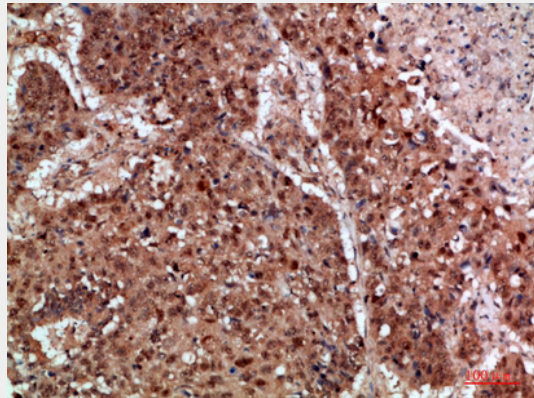
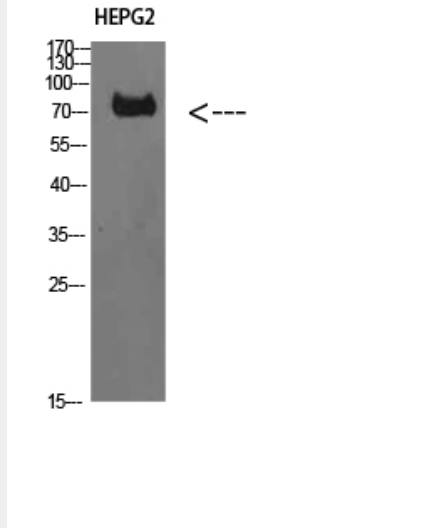
TRIF Polyclonal Antibody - Protocols

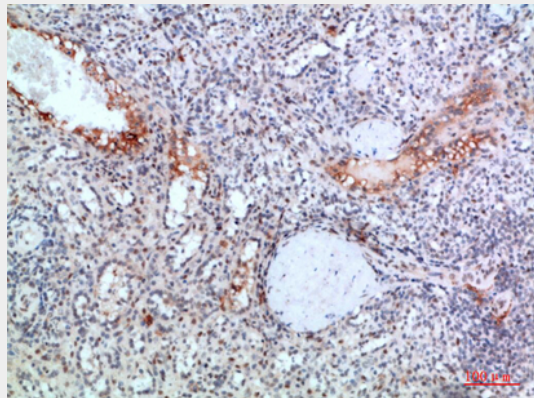
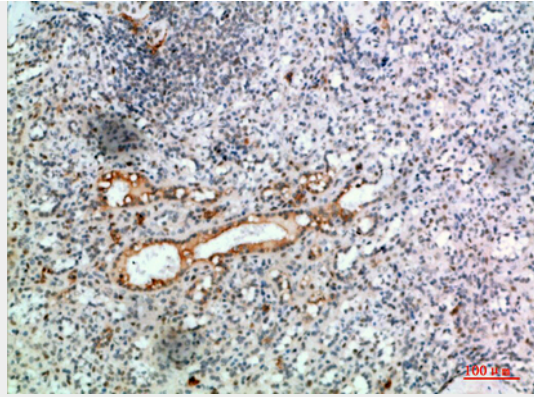
Provided below are standard protocols that you may find useful for product applications.

- [Western Blot](#)
- [Blocking Peptides](#)
- [Dot Blot](#)
- [Immunohistochemistry](#)
- [Immunofluorescence](#)
- [Immunoprecipitation](#)
- [Flow Cytometry](#)
- [Cell Culture](#)

TRIF Polyclonal Antibody - Images







TRIF Polyclonal Antibody - Background

Involved in innate immunity against invading pathogens. Adapter used by TLR3, TLR4 (through TICAM2) and TLR5 to mediate NF-kappa-B and interferon-regulatory factor (IRF) activation, and to induce apoptosis. Ligand binding to these receptors results in TRIF recruitment through its TIR domain. Distinct protein- interaction motifs allow recruitment of the effector proteins TBK1, TRAF6 and RIPK1, which in turn, lead to the activation of transcription factors IRF3 and IRF7, NF-kappa-B and FADD respectively. Component of a multi-helicase-TICAM1 complex that acts as a cytoplasmic sensor of viral double-stranded RNA (dsRNA) and plays a role in the activation of a cascade of antiviral responses including the induction of proinflammatory cytokines (By similarity).