

Collagen IV Polyclonal Antibody
Catalog # AP73951**Specification**

Collagen IV Polyclonal Antibody - Product Information

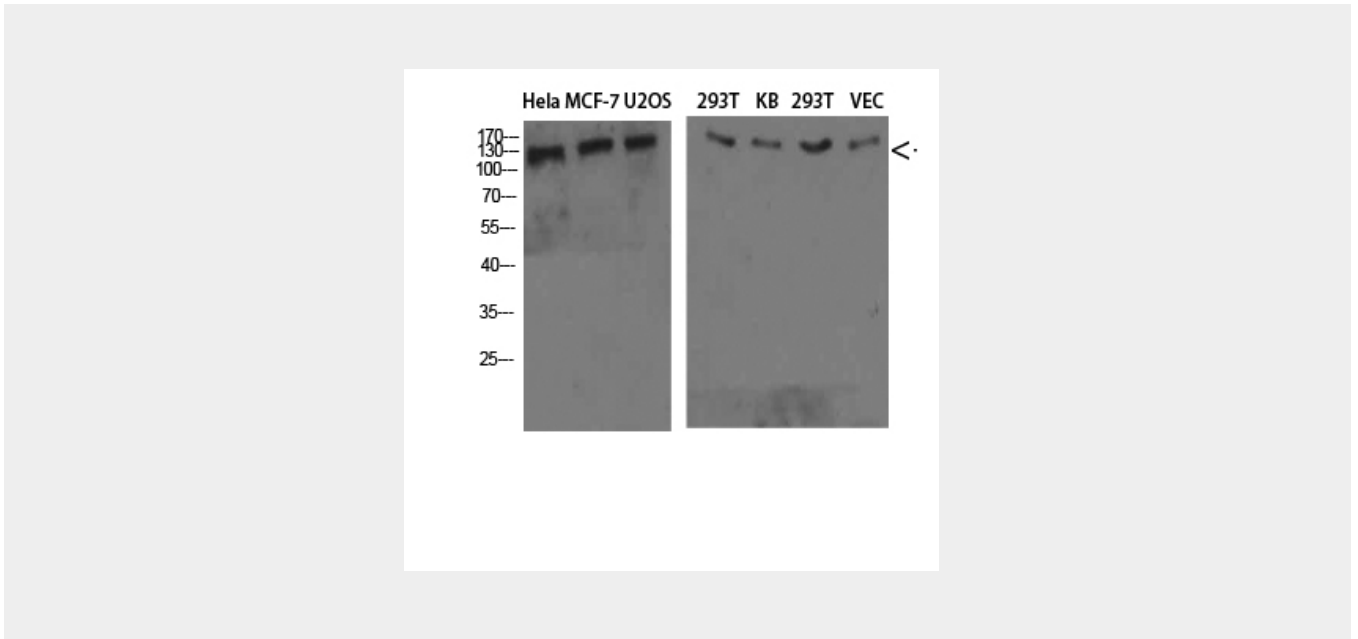
Application	WB
Primary Accession	P02462
Reactivity	Human, Mouse, Rat
Host	Rabbit
Clonality	Polyclonal

Collagen IV Polyclonal Antibody - Additional Information**Gene ID** 1282**Other Names**
collagen, type IV, alpha 1**Dilution**
WB~~WB 1:500-2000, ELISA 1:10000-20000**Format**
Liquid in PBS containing 50% glycerol, 0.5% BSA and 0.09% (W/V) sodium azide.**Storage Conditions**
-20°C**Collagen IV Polyclonal Antibody - Protein Information****Name** COL4A1 ([HGNC:2202](#))**Function**
Type IV collagen is the major structural component of glomerular basement membranes (GBM), forming a 'chicken-wire' meshwork together with laminins, proteoglycans and entactin/nidogen.**Cellular Location**
Secreted, extracellular space, extracellular matrix, basement membrane
{ECO:0000250|UniProtKB:P02463}**Tissue Location**
Highly expressed in placenta.**Collagen IV Polyclonal Antibody - Protocols**

Provided below are standard protocols that you may find useful for product applications.

- [Western Blot](#)
- [Blocking Peptides](#)
- [Dot Blot](#)
- [Immunohistochemistry](#)
- [Immunofluorescence](#)
- [Immunoprecipitation](#)
- [Flow Cytometry](#)
- [Cell Culture](#)

Collagen IV Polyclonal Antibody - Images



Collagen IV Polyclonal Antibody - Background

Type IV collagen is the major structural component of glomerular basement membranes (GBM), forming a 'chicken-wire' meshwork together with laminins, proteoglycans and entactin/nidogen.