

**Collagen IV Polyclonal Antibody**  
Catalog # AP73950**Specification**

---

**Collagen IV Polyclonal Antibody - Product Information**

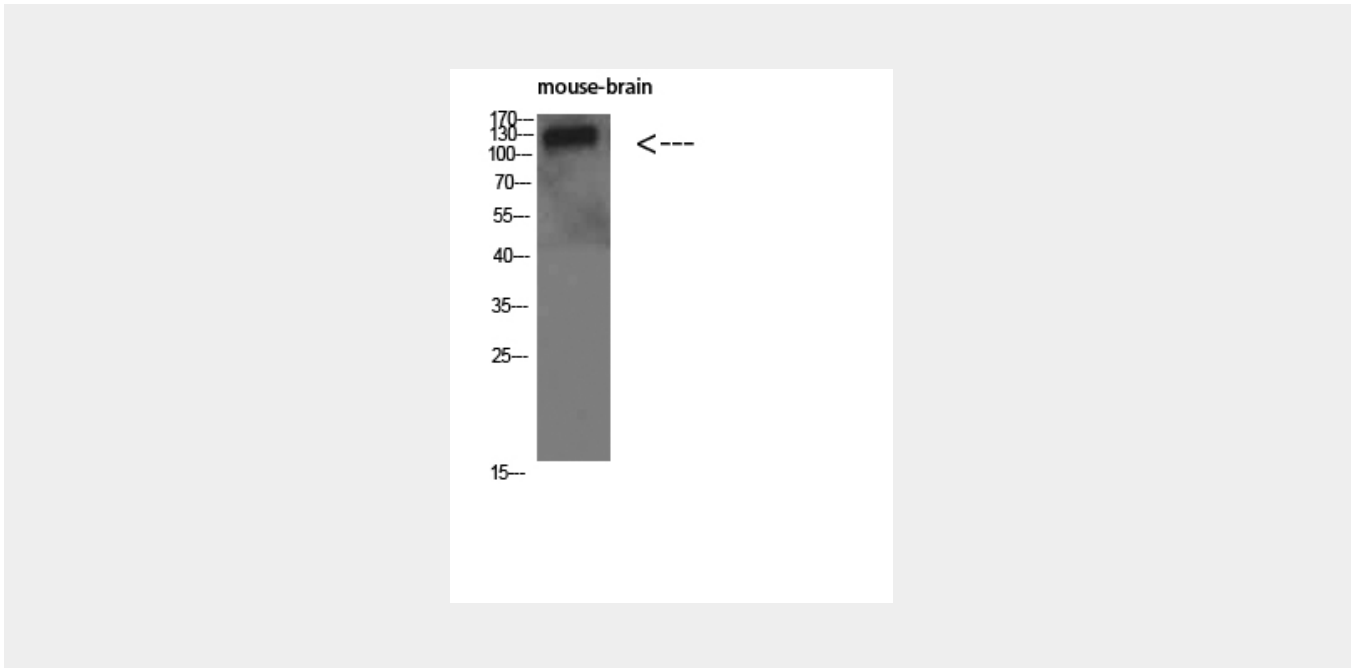
Application	WB
Primary Accession	<a href="#">P02462</a>
Reactivity	Human, Mouse, Rat
Host	Rabbit
Clonality	Polyclonal

**Collagen IV Polyclonal Antibody - Additional Information****Gene ID** 1282**Other Names**  
collagen, type IV, alpha 1**Dilution**  
WB~~WB 1:500-2000, ELISA 1:10000-20000**Format**  
Liquid in PBS containing 50% glycerol, 0.5% BSA and 0.09% (W/V) sodium azide.**Storage Conditions**  
-20°C**Collagen IV Polyclonal Antibody - Protein Information****Name** COL4A1 ([HGNC:2202](#))**Function**  
Type IV collagen is the major structural component of glomerular basement membranes (GBM), forming a 'chicken-wire' meshwork together with laminins, proteoglycans and entactin/nidogen.**Cellular Location**  
Secreted, extracellular space, extracellular matrix, basement membrane  
{ECO:0000250|UniProtKB:P02463}**Tissue Location**  
Highly expressed in placenta.**Collagen IV Polyclonal Antibody - Protocols**

Provided below are standard protocols that you may find useful for product applications.

- [Western Blot](#)
- [Blocking Peptides](#)
- [Dot Blot](#)
- [Immunohistochemistry](#)
- [Immunofluorescence](#)
- [Immunoprecipitation](#)
- [Flow Cytometry](#)
- [Cell Culture](#)

### Collagen IV Polyclonal Antibody - Images



### Collagen IV Polyclonal Antibody - Background

Type IV collagen is the major structural component of glomerular basement membranes (GBM), forming a 'chicken-wire' meshwork together with laminins, proteoglycans and entactin/nidogen.