

**MUM1 Polyclonal Antibody**  
Catalog # AP73936**Specification**

---

**MUM1 Polyclonal Antibody - Product Information**

Application	WB
Primary Accession	<a href="#">Q2TAK8</a>
Reactivity	Human, Mouse, Rat
Host	Rabbit
Clonality	Polyclonal

**MUM1 Polyclonal Antibody - Additional Information****Gene ID** 84939**Other Names**

melanoma associated antigen (mutated) 1

**Dilution**

WB~~WB 1:500-2000, ELISA 1:10000-20000

**Format**

Liquid in PBS containing 50% glycerol, 0.5% BSA and 0.09% (W/V) sodium azide.

**Storage Conditions**

-20°C

**MUM1 Polyclonal Antibody - Protein Information****Name** PWWP3A ([HGNC:29641](#))**Function**

Involved in the DNA damage response pathway by contributing to the maintenance of chromatin architecture. Recruited to the vicinity of DNA breaks by TP53BP1 and plays an accessory role to facilitate damage-induced chromatin changes and promoting chromatin relaxation. Required for efficient DNA repair and cell survival following DNA damage.

**Cellular Location**

Nucleus. Note=Recruited to DNA damage sites via its interaction with the BRCT domain of TP53BP1

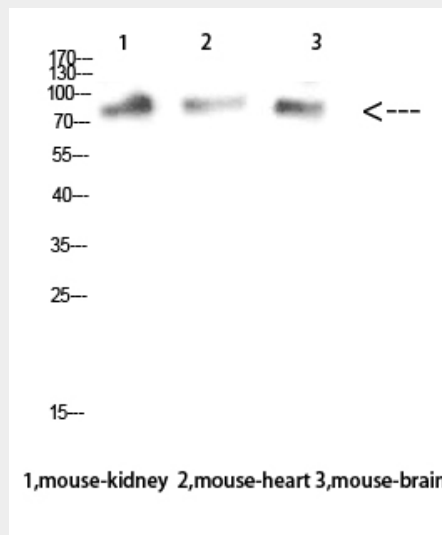
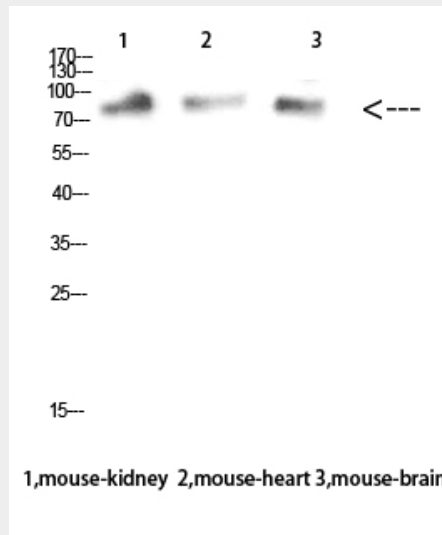
**MUM1 Polyclonal Antibody - Protocols**

Provided below are standard protocols that you may find useful for product applications.

- [Western Blot](#)

- [Blocking Peptides](#)
- [Dot Blot](#)
- [Immunohistochemistry](#)
- [Immunofluorescence](#)
- [Immunoprecipitation](#)
- [Flow Cytometry](#)
- [Cell Culture](#)

### MUM1 Polyclonal Antibody - Images



### MUM1 Polyclonal Antibody - Background

Involved in the DNA damage response pathway by contributing to the maintenance of chromatin architecture. Recruited to the vicinity of DNA breaks by TP53BP1 and plays an accessory role to facilitate damage-induced chromatin changes and promoting chromatin relaxation. Required for efficient DNA repair and cell survival following DNA damage.