

HSP70 Polyclonal Antibody
Catalog # AP73934**Specification**

HSP70 Polyclonal Antibody - Product Information

| | |
|-------------------|------------------------|
| Application | WB |
| Primary Accession | P08107 |
| Reactivity | Human |
| Host | Rabbit |
| Clonality | Polyclonal |

HSP70 Polyclonal Antibody - Additional Information**Other Names**

heat shock 70kDa protein 1A; heat shock 70kDa protein 1B

Dilution

WB~~WB 1:500-2000, ELISA 1:10000-20000

Format

Liquid in PBS containing 50% glycerol, 0.5% BSA and 0.09% (W/V) sodium azide.

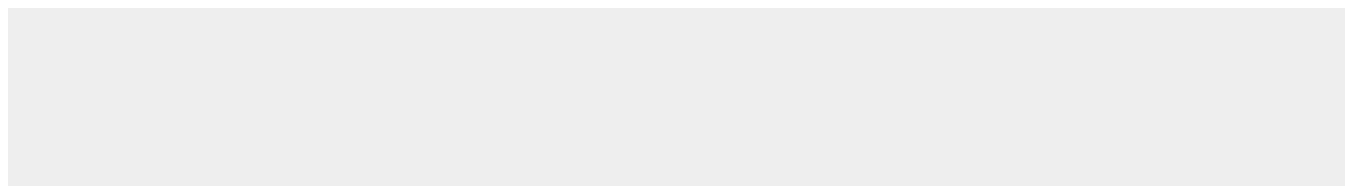
Storage Conditions

-20°C

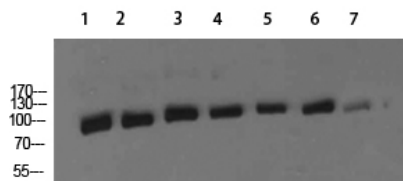
HSP70 Polyclonal Antibody - Protein Information**HSP70 Polyclonal Antibody - Protocols**

Provided below are standard protocols that you may find useful for product applications.

- [Western Blot](#)
- [Blocking Peptides](#)
- [Dot Blot](#)
- [Immunohistochemistry](#)
- [Immunofluorescence](#)
- [Immunoprecipitation](#)
- [Flow Cytometry](#)
- [Cell Culture](#)

HSP70 Polyclonal Antibody - Images

MOUSE-BRAIN



1,mouse-kidney 2,mouse-heart 3,mouse-brain 4,mouse-lung
5,Hela 6,KB 7,SH-SY5Y