

E-Selectin Polyclonal Antibody
Catalog # AP73928**Specification**

E-Selectin Polyclonal Antibody - Product Information

Application	IHC
Primary Accession	P16581
Reactivity	Human
Host	Rabbit
Clonality	Polyclonal

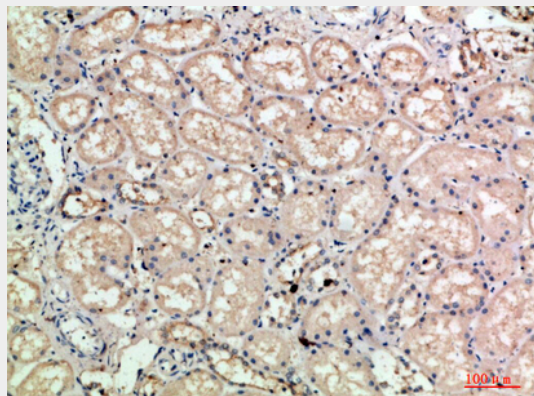
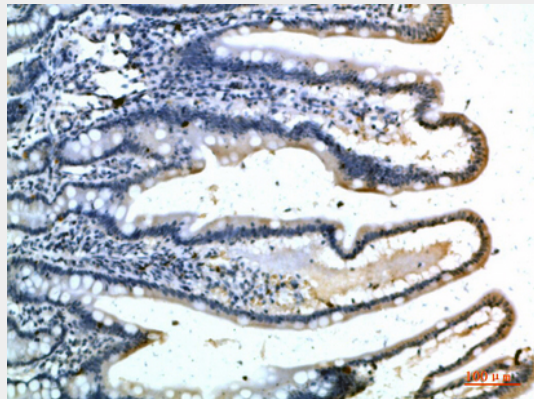
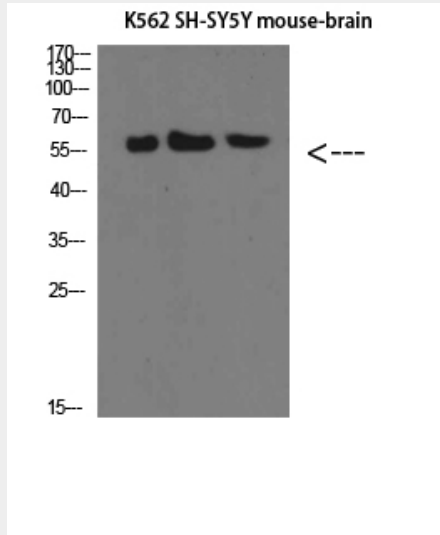
E-Selectin Polyclonal Antibody - Additional Information**Gene ID** 6401**Other Names**
selectin E**Dilution**
IHC~~IHC-p: 100-300.WB 1:500-2000, ELISA 1:10000-20000**Format**
Liquid in PBS containing 50% glycerol, 0.5% BSA and 0.09% (W/V) sodium azide.**Storage Conditions**
-20°C**E-Selectin Polyclonal Antibody - Protein Information****Name** SELE**Synonyms** ELAM1**Function**
Cell-surface glycoprotein having a role in immunoadhesion. Mediates in the adhesion of blood neutrophils in cytokine-activated endothelium through interaction with SELPLG/PSGL1. May have a role in capillary morphogenesis.**Cellular Location**
Cell membrane; Single-pass type I membrane protein**E-Selectin Polyclonal Antibody - Protocols**

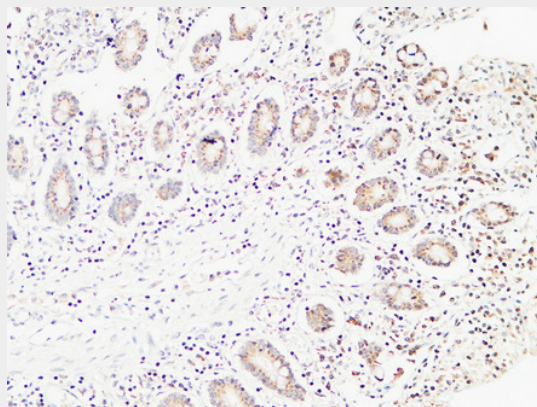
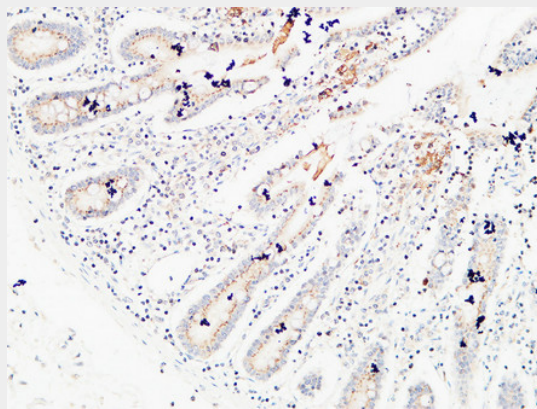
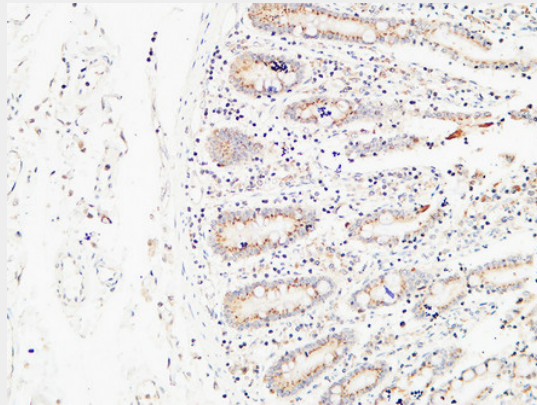
Provided below are standard protocols that you may find useful for product applications.

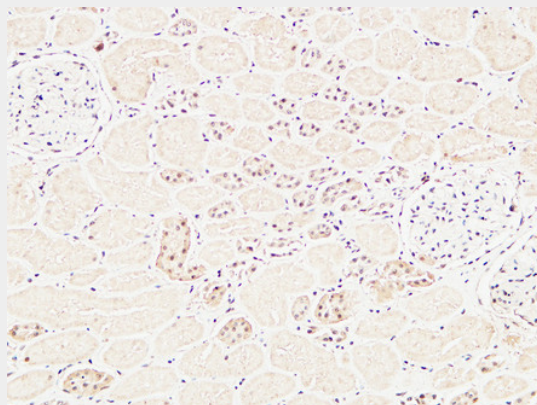
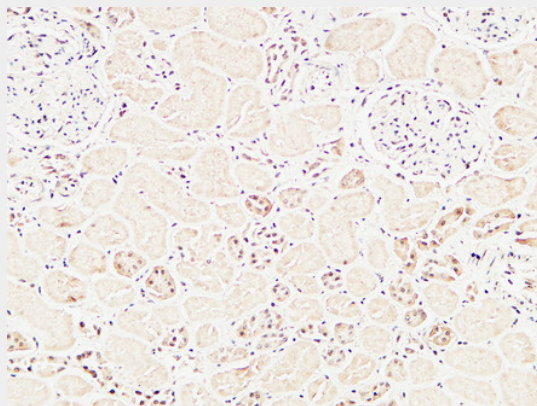
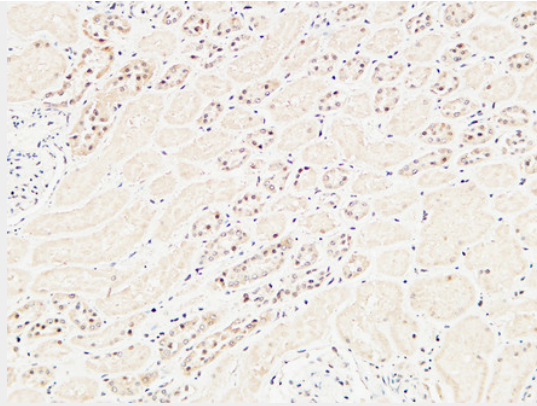
- [Western Blot](#)

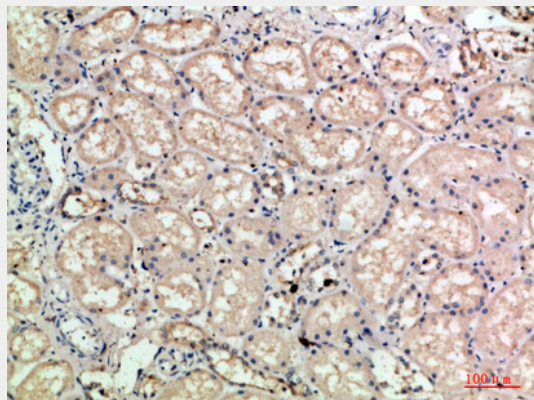
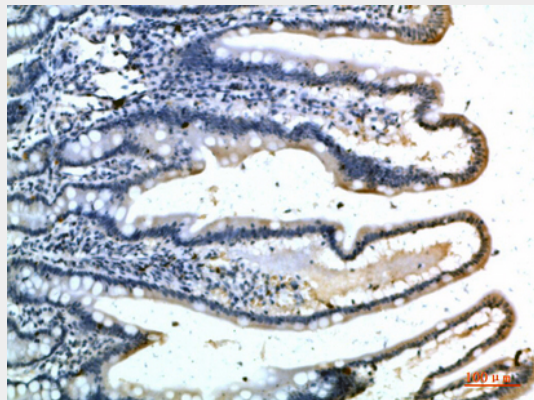
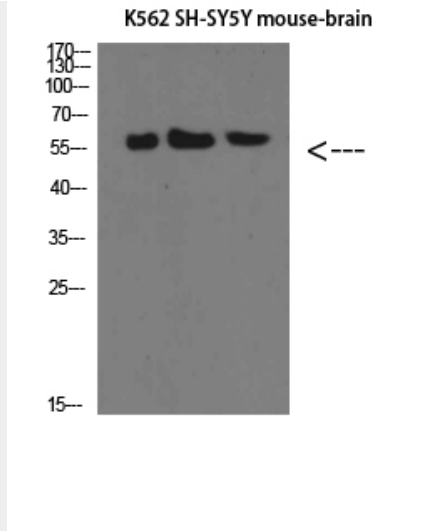
- [Blocking Peptides](#)
- [Dot Blot](#)
- [Immunohistochemistry](#)
- [Immunofluorescence](#)
- [Immunoprecipitation](#)
- [Flow Cytometry](#)
- [Cell Culture](#)

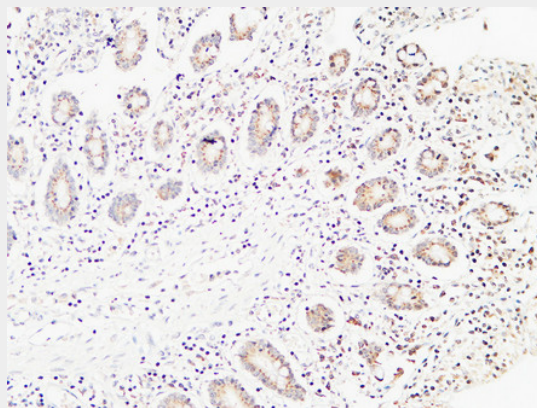
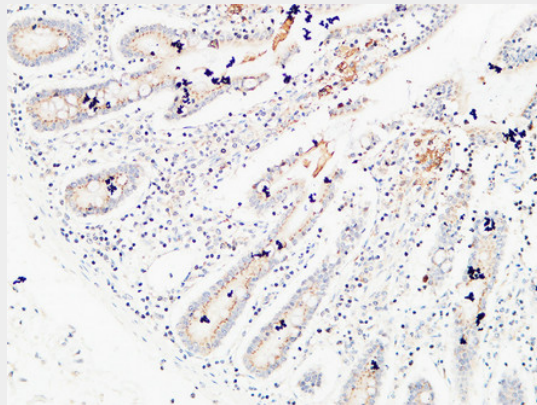
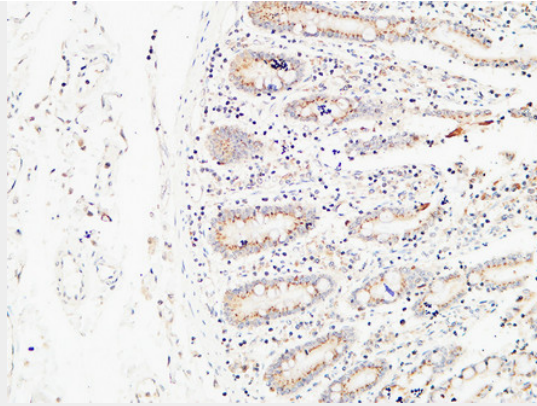
E-Selectin Polyclonal Antibody - Images

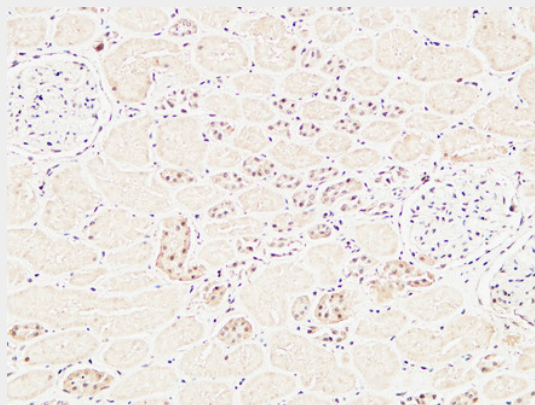
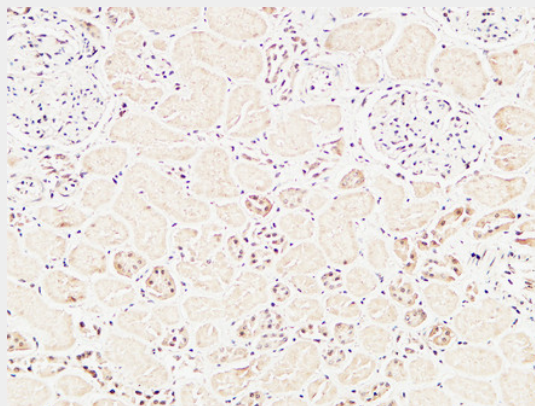
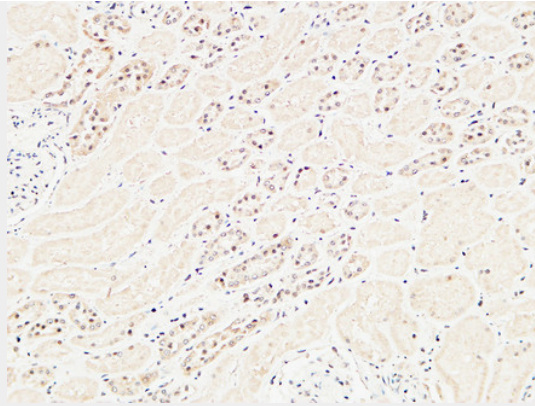












E-Selectin Polyclonal Antibody - Background

Cell-surface glycoprotein having a role in immunoadhesion. Mediates in the adhesion of blood neutrophils in cytokine-activated endothelium through interaction with SELPLG/PSGL1. May have a role in capillary morphogenesis.