

Calretinin Polyclonal Antibody
Catalog # AP73924**Specification**

Calretinin Polyclonal Antibody - Product Information

Application	WB
Primary Accession	P22676
Reactivity	Human, Mouse, Rat
Host	Rabbit
Clonality	Polyclonal

Calretinin Polyclonal Antibody - Additional Information**Gene ID** 794**Other Names**

Calretinin (CR) (29 kDa calbindin)

Dilution

WB~~Western Blot: 1/500 - 1/2000. ELISA: 1/10000. Not yet tested in other applications.

Format

Liquid in PBS containing 50% glycerol, 0.5% BSA and 0.09% (W/V) sodium azide.

Storage Conditions

-20°C

Calretinin Polyclonal Antibody - Protein Information**Name** CALB2**Synonyms** CAB29**Function**

Calretinin is a calcium-binding protein which is abundant in auditory neurons.

Tissue Location

Brain.

Calretinin Polyclonal Antibody - Protocols

Provided below are standard protocols that you may find useful for product applications.

- [Western Blot](#)
- [Blocking Peptides](#)
- [Dot Blot](#)

- [Immunohistochemistry](#)
- [Immunofluorescence](#)
- [Immunoprecipitation](#)
- [Flow Cytometry](#)
- [Cell Culture](#)

Calretinin Polyclonal Antibody - Images

Image not found : 202004/e20799wb4207942186.jpg

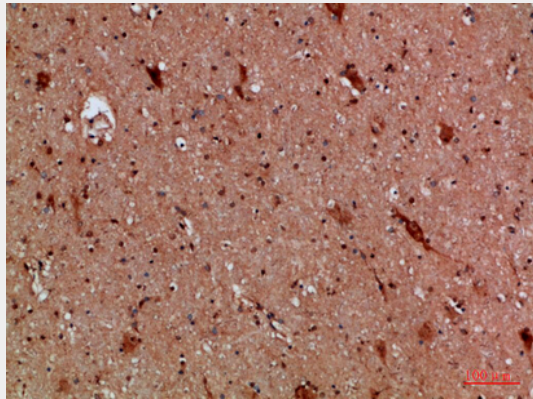
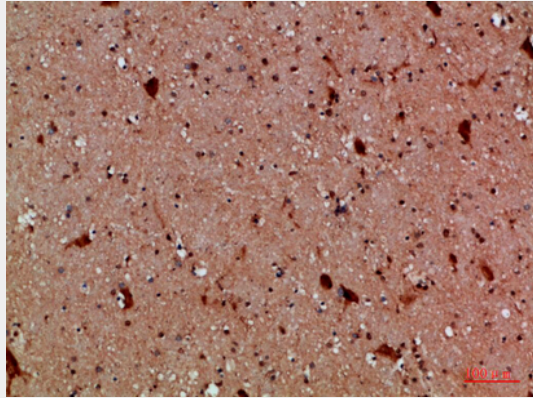
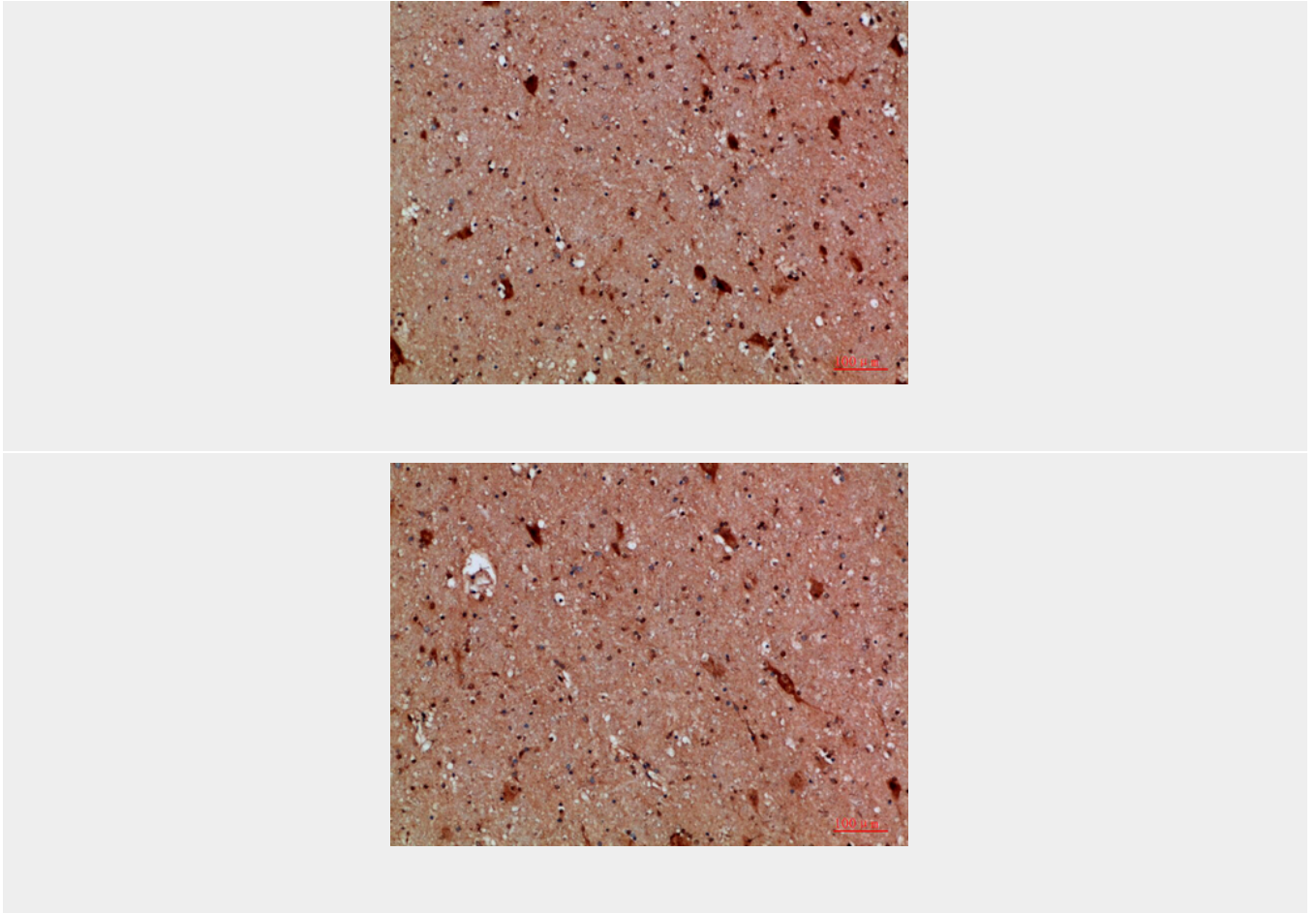


Image not found : 202004/e20799wb4207942186.jpg



Calretinin Polyclonal Antibody - Background

Calretinin is a calcium-binding protein which is abundant in auditory neurons.