

**Nodal Polyclonal Antibody**  
Catalog # AP73910**Specification**

---

**Nodal Polyclonal Antibody - Product Information**

Application	WB
Primary Accession	<a href="#">Q96S42</a>
Reactivity	Human, Mouse, Rat
Host	Rabbit
Clonality	Polyclonal

**Nodal Polyclonal Antibody - Additional Information****Gene ID** 4838**Other Names**

NODAL; Nodal homolog

**Dilution**

WB~~Western Blot: 1/500 - 1/2000. IHC-p: 1:100-1:300. ELISA: 1/10000. Not yet tested in other applications.

**Format**

Liquid in PBS containing 50% glycerol, 0.5% BSA and 0.09% (W/V) sodium azide.

**Storage Conditions**

-20°C

**Nodal Polyclonal Antibody - Protein Information****Name** NODAL**Function**

Essential for mesoderm formation and axial patterning during embryonic development.

**Cellular Location**

Secreted.

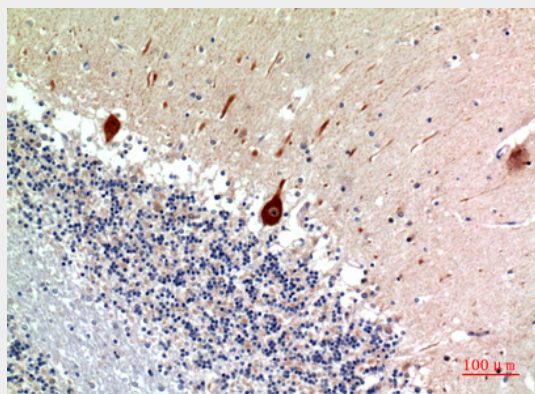
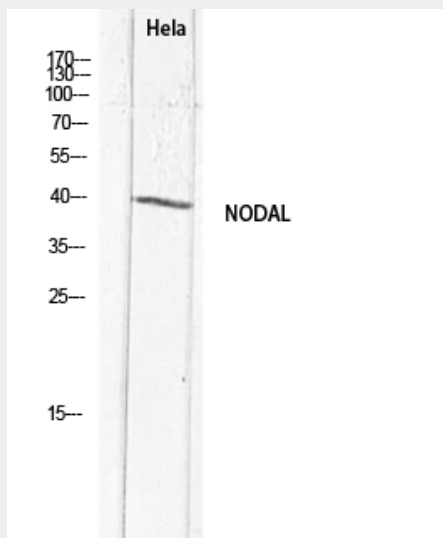
**Nodal Polyclonal Antibody - Protocols**

Provided below are standard protocols that you may find useful for product applications.

- [Western Blot](#)
- [Blocking Peptides](#)
- [Dot Blot](#)
- [Immunohistochemistry](#)

- [Immunofluorescence](#)
- [Immunoprecipitation](#)
- [Flow Cytometry](#)
- [Cell Culture](#)

### Nodal Polyclonal Antibody - Images



### Nodal Polyclonal Antibody - Background

Essential for mesoderm formation and axial patterning during embryonic development.