

CD26 Polyclonal Antibody
Catalog # AP73890**Specification****CD26 Polyclonal Antibody - Product Information**

Application	WB
Primary Accession	P27487
Reactivity	Human
Host	Rabbit
Clonality	Polyclonal

CD26 Polyclonal Antibody - Additional Information**Gene ID** 1803**Other Names**

DPP4; ADCP2; CD26; Dipeptidyl peptidase 4; ADABP; Adenosine deaminase complexing protein 2; ADCP-2; Dipeptidyl peptidase IV; DPP IV; T-cell activation antigen CD26; TP103; CD26

Dilution

WB~~Western Blot: 1/500 - 1/2000. IHC-p: 1:100-1:300. ELISA: 1/10000. Not yet tested in other applications.

Format

Liquid in PBS containing 50% glycerol, 0.5% BSA and 0.09% (W/V) sodium azide.

Storage Conditions

-20°C

CD26 Polyclonal Antibody - Protein Information**Name** DPP4 ([HGNC:3009](#))**Synonyms** ADCP2, CD26**Function**

Cell surface glycoprotein receptor involved in the costimulatory signal essential for T-cell receptor (TCR)-mediated T- cell activation (PubMed: [10900005](http://www.uniprot.org/citations/10900005), PubMed: [10951221](http://www.uniprot.org/citations/10951221), PubMed: [11772392](http://www.uniprot.org/citations/11772392), PubMed: [17287217](http://www.uniprot.org/citations/17287217)). Acts as a positive regulator of T-cell coactivation, by binding at least ADA, CAV1, IGF2R, and PTPRC (PubMed: [10900005](http://www.uniprot.org/citations/10900005), PubMed: [10951221](http://www.uniprot.org/citations/10951221), PubMed: [11772392](http://www.uniprot.org/citations/11772392), PubMed: [14691230](http://www.uniprot.org/citations/14691230)). Its binding to CAV1 and CARD11 induces T-cell proliferation and NF-kappa-B activation in a T-cell receptor/CD3-dependent manner (PubMed: [14691230](http://www.uniprot.org/citations/14691230)).

[17287217](http://www.uniprot.org/citations/17287217)). Its interaction with ADA also regulates lymphocyte-epithelial cell adhesion (PubMed:[11772392](http://www.uniprot.org/citations/11772392)). In association with FAP is involved in the pericellular proteolysis of the extracellular matrix (ECM), the migration and invasion of endothelial cells into the ECM (PubMed:[10593948](http://www.uniprot.org/citations/10593948)), PubMed:[16651416](http://www.uniprot.org/citations/16651416)). May be involved in the promotion of lymphatic endothelial cells adhesion, migration and tube formation (PubMed:[18708048](http://www.uniprot.org/citations/18708048)). When overexpressed, enhanced cell proliferation, a process inhibited by GPC3 (PubMed:[17549790](http://www.uniprot.org/citations/17549790)). Acts also as a serine exopeptidase with a dipeptidyl peptidase activity that regulates various physiological processes by cleaving peptides in the circulation, including many chemokines, mitogenic growth factors, neuropeptides and peptide hormones such as brain natriuretic peptide 32 (PubMed:[10570924](http://www.uniprot.org/citations/10570924)), PubMed:[16254193](http://www.uniprot.org/citations/16254193)). Removes N-terminal dipeptides sequentially from polypeptides having unsubstituted N-termini provided that the penultimate residue is proline (PubMed:[10593948](http://www.uniprot.org/citations/10593948)).

Cellular Location

[Dipeptidyl peptidase 4 soluble form]: Secreted Note=Detected in the serum and the seminal fluid

Tissue Location

Expressed specifically in lymphatic vessels but not in blood vessels in the skin, small intestine, esophagus, ovary, breast and prostate glands. Not detected in lymphatic vessels in the lung, kidney, uterus, liver and stomach (at protein level). Expressed in the poorly differentiated crypt cells of the small intestine as well as in the mature villous cells. Expressed at very low levels in the colon

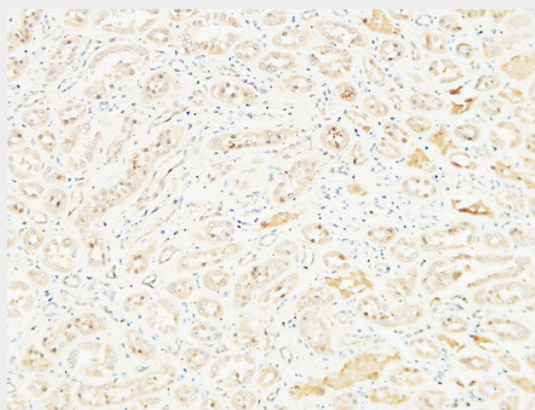
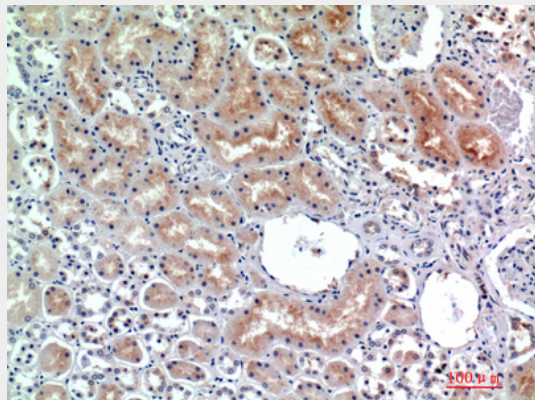
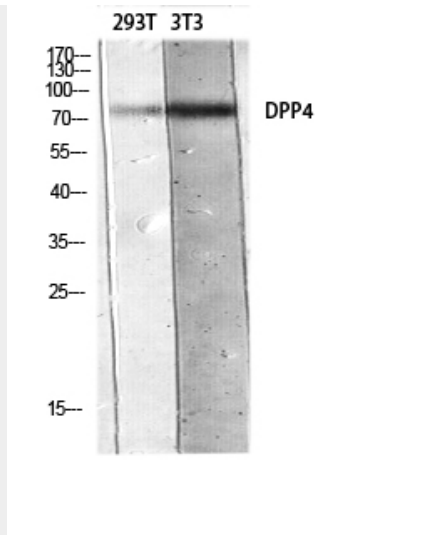
CD26 Polyclonal Antibody - Protocols

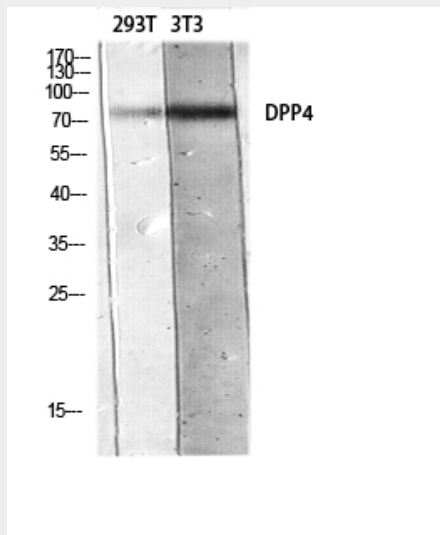
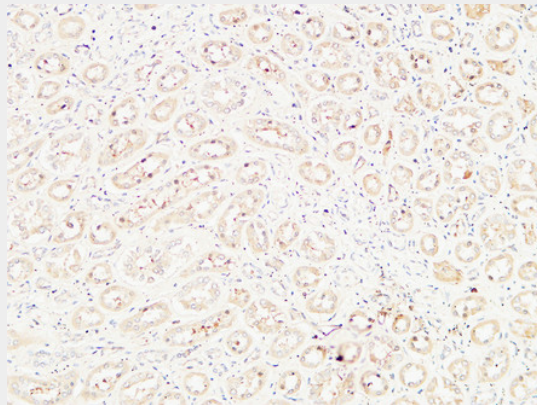
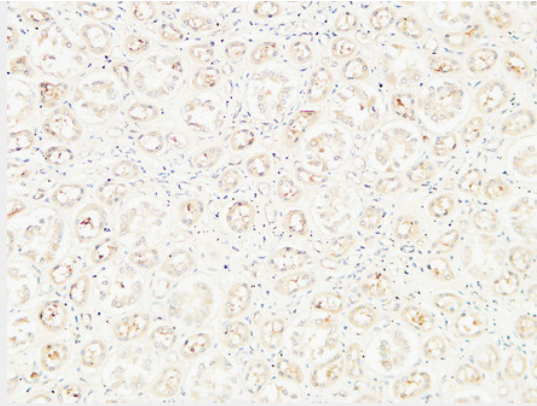
Provided below are standard protocols that you may find useful for product applications.

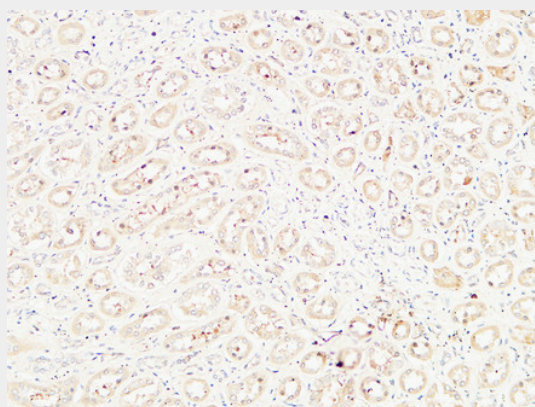
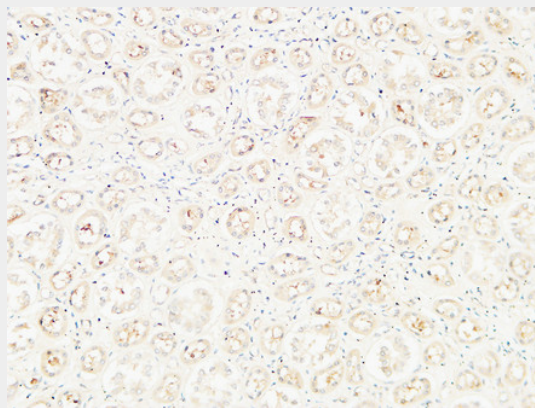
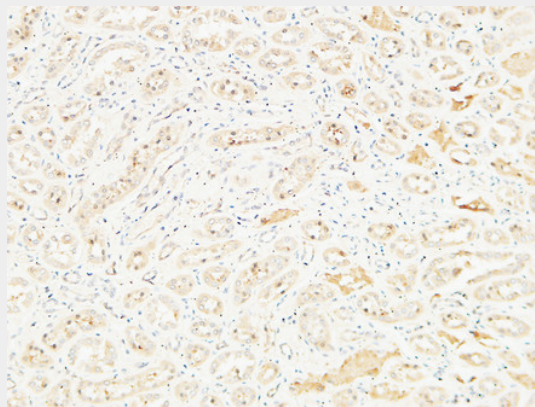
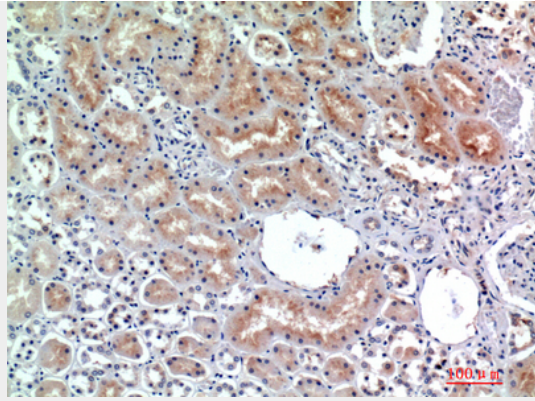
- [Western Blot](#)
- [Blocking Peptides](#)
- [Dot Blot](#)
- [Immunohistochemistry](#)
- [Immunofluorescence](#)
- [Immunoprecipitation](#)
- [Flow Cytometry](#)
- [Cell Culture](#)

CD26 Polyclonal Antibody - Images









CD26 Polyclonal Antibody - Background

Cell surface glycoprotein receptor involved in the costimulatory signal essential for T-cell receptor (TCR)-mediated T-cell activation. Acts as a positive regulator of T-cell coactivation, by binding at least ADA, CAV1, IGF2R, and PTPRC. Its binding to CAV1 and CARD11 induces T-cell proliferation and NF- kappa-B activation in a T-cell receptor/CD3-dependent manner. Its interaction with ADA also regulates lymphocyte-epithelial cell adhesion. In association with FAP is involved in the pericellular proteolysis of the extracellular matrix (ECM), the migration and invasion of endothelial cells into the ECM. May be involved in the promotion of lymphatic endothelial cells adhesion, migration and tube formation. When overexpressed, enhanced cell proliferation, a process inhibited by GPC3. Acts also as a serine exopeptidase with a dipeptidyl peptidase activity that regulates various physiological processes by cleaving peptides in the circulation, including many chemokines, mitogenic growth factors, neuropeptides and peptide hormones. Removes N-terminal dipeptides sequentially from polypeptides having unsubstituted N-termini provided that the penultimate residue is proline.