

**Endoglycan Polyclonal Antibody**  
Catalog # AP73867

**Specification**

---

**Endoglycan Polyclonal Antibody - Product Information**

Application	WB
Primary Accession	<a href="#">Q9NZ53</a>
Reactivity	Human
Host	Rabbit
Clonality	Polyclonal

**Endoglycan Polyclonal Antibody - Additional Information**

**Gene ID** 50512

**Other Names**

PODXL2; Podocalyxin-like protein 2; Endoglycan

**Dilution**

WB~~Western Blot: 1/500 - 1/2000. ELISA: 1/10000. Not yet tested in other applications.

**Format**

Liquid in PBS containing 50% glycerol, 0.5% BSA and 0.09% (W/V) sodium azide.

**Storage Conditions**

-20°C

**Endoglycan Polyclonal Antibody - Protein Information**

**Name** PODXL2

**Function**

Acts as a ligand for vascular selectins. Mediates rapid rolling of leukocytes over vascular surfaces through high affinity divalent cation-dependent interactions with E-, P- and L-selectins.

**Cellular Location**

Membrane; Single-pass type I membrane protein

**Tissue Location**

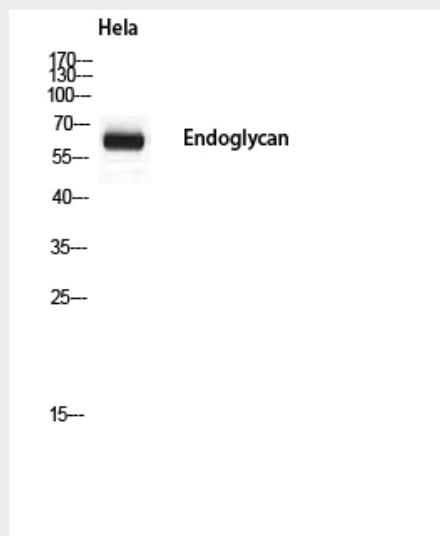
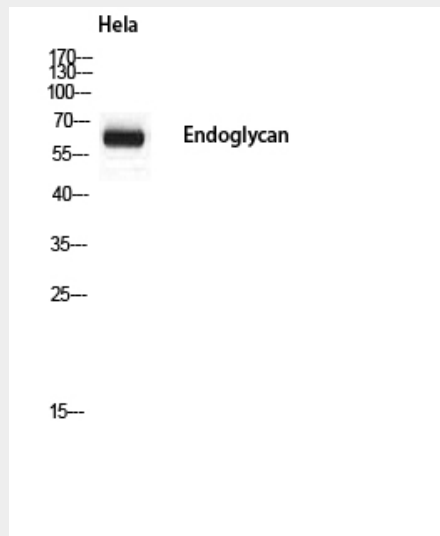
Expressed in T-cells, B-cells and monocytes. Expression is higher on memory and germinal center cells than on naive B-cells (at protein level). Highly expressed in brain. Moderately expressed in pancreas, kidney and lymphoid node. Weakly expressed in liver. Detected in both endothelial cells and CD34+ bone marrow cells

**Endoglycan Polyclonal Antibody - Protocols**

Provided below are standard protocols that you may find useful for product applications.

- [Western Blot](#)
- [Blocking Peptides](#)
- [Dot Blot](#)
- [Immunohistochemistry](#)
- [Immunofluorescence](#)
- [Immunoprecipitation](#)
- [Flow Cytometry](#)
- [Cell Culture](#)

### Endoglycan Polyclonal Antibody - Images



### Endoglycan Polyclonal Antibody - Background

Acts as a ligand for vascular selectins. Mediates rapid rolling of leukocytes over vascular surfaces through high affinity divalent cation-dependent interactions with E-, P- and L- selectins.