

**SEC22B Polyclonal Antibody**  
Catalog # AP73863**Specification**

---

**SEC22B Polyclonal Antibody - Product Information**

Application	<b>WB</b>
Primary Accession	<a href="#">O75396</a>
Reactivity	<b>Human, Mouse, Rat</b>
Host	<b>Rabbit</b>
Clonality	<b>Polyclonal</b>

**SEC22B Polyclonal Antibody - Additional Information****Gene ID** 9554**Other Names**

SEC22B; SEC22L1; Vesicle-trafficking protein SEC22b; ER-Golgi SNARE of 24 kDa; ERS-24; ERS24; SEC22 vesicle-trafficking protein homolog B; SEC22 vesicle-trafficking protein-like 1

**Dilution**

WB~~Western Blot: 1/500 - 1/2000. IHC-p: 1:100-1:300. ELISA: 1/10000. Not yet tested in other applications.

**Format**

Liquid in PBS containing 50% glycerol, 0.5% BSA and 0.09% (W/V) sodium azide.

**Storage Conditions**

-20°C

**SEC22B Polyclonal Antibody - Protein Information****Name** SEC22B**Synonyms** SEC22L1**Function**

SNARE involved in targeting and fusion of ER-derived transport vesicles with the Golgi complex as well as Golgi-derived retrograde transport vesicles with the ER.

**Cellular Location**

Endoplasmic reticulum membrane {ECO:0000250|UniProtKB:Q4KM74}; Single-pass type IV membrane protein {ECO:0000250|UniProtKB:Q4KM74}. Endoplasmic reticulum-Golgi intermediate compartment membrane {ECO:0000250|UniProtKB:Q4KM74}. Golgi apparatus, cis-Golgi network membrane {ECO:0000250|UniProtKB:Q4KM74} Golgi apparatus, trans-Golgi network membrane {ECO:0000250|UniProtKB:Q4KM74}. Melanosome. Note=Concentrated most in the intermediate compartment/cis-Golgi network and the cis-Golgi cisternae 1 and 2. Greatly reduced in concentration at the trans end of the Golgi apparatus (By similarity). Identified by mass spectrometry in melanosome fractions from stage I to stage IV (PubMed:17081065)

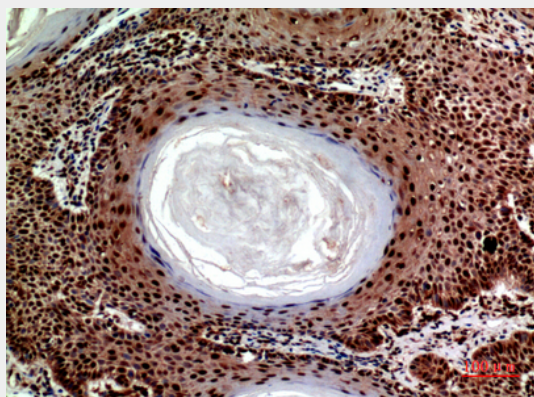
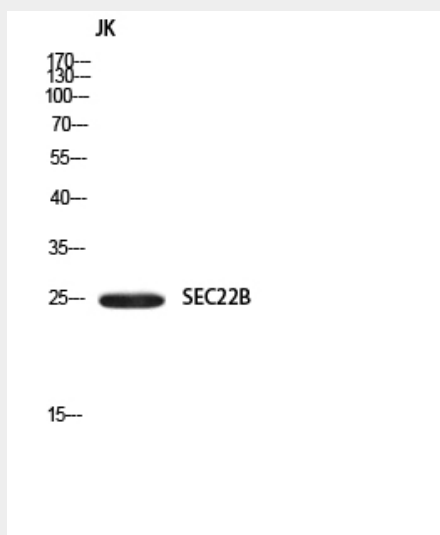
{ECO:0000250|UniProtKB:Q4KM74, ECO:0000269|PubMed:17081065}

### SEC22B Polyclonal Antibody - Protocols

Provided below are standard protocols that you may find useful for product applications.

- [Western Blot](#)
- [Blocking Peptides](#)
- [Dot Blot](#)
- [Immunohistochemistry](#)
- [Immunofluorescence](#)
- [Immunoprecipitation](#)
- [Flow Cytometry](#)
- [Cell Culture](#)

### SEC22B Polyclonal Antibody - Images



### SEC22B Polyclonal Antibody - Background

SNARE involved in targeting and fusion of ER-derived transport vesicles with the Golgi complex as well as Golgi-derived retrograde transport vesicles with the ER.