

**p16 Polyclonal Antibody**  
Catalog # AP73847**Specification**

---

**p16 Polyclonal Antibody - Product Information**

Application	WB
Primary Accession	<a href="#">P42771</a>
Reactivity	Human
Host	Rabbit
Clonality	Polyclonal

**p16 Polyclonal Antibody - Additional Information****Gene ID** 1029**Other Names**

CDKN2A; CDKN2; MTS1; Cyclin-dependent kinase inhibitor 2A, isoforms 1/2/3; Cyclin-dependent kinase 4 inhibitor A; CDK4I; Multiple tumor suppressor 1; MTS-1; p16-INK4a; p16-INK4; p16INK4A

**Dilution**

WB~~Western Blot: 1/500 - 1/2000. ELISA: 1/10000. Not yet tested in other applications.

**Format**

Liquid in PBS containing 50% glycerol, 0.5% BSA and 0.09% (W/V) sodium azide.

**Storage Conditions**

-20°C

**p16 Polyclonal Antibody - Protein Information****Name** CDKN2A ([HGNC:1787](#))**Synonyms** CDKN2, MTS1**Function**

Acts as a negative regulator of the proliferation of normal cells by interacting strongly with CDK4 and CDK6. This inhibits their ability to interact with cyclins D and to phosphorylate the retinoblastoma protein.

**Cellular Location**

Cytoplasm. Nucleus

**Tissue Location**

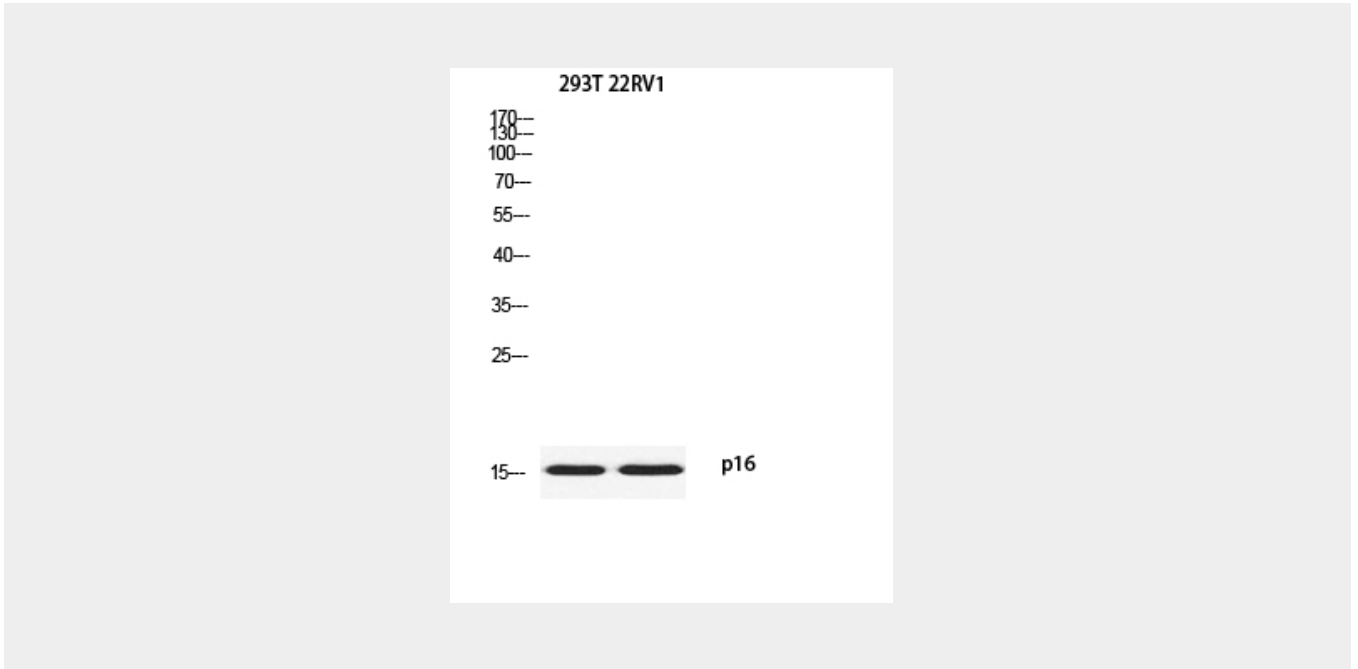
Widely expressed but not detected in brain or skeletal muscle. Isoform 3 is pancreas-specific

**p16 Polyclonal Antibody - Protocols**

Provided below are standard protocols that you may find useful for product applications.

- [Western Blot](#)
- [Blocking Peptides](#)
- [Dot Blot](#)
- [Immunohistochemistry](#)
- [Immunofluorescence](#)
- [Immunoprecipitation](#)
- [Flow Cytometry](#)
- [Cell Culture](#)

#### **p16 Polyclonal Antibody - Images**



#### **p16 Polyclonal Antibody - Background**

Acts as a negative regulator of the proliferation of normal cells by interacting strongly with CDK4 and CDK6. This inhibits their ability to interact with cyclins D and to phosphorylate the retinoblastoma protein.