

Epigen Polyclonal Antibody Catalog # AP73839

Specification

Epigen Polyclonal Antibody - Product Information

Application	WB
Primary Accession	Q6UW88
Reactivity	Human
Host	Rabbit
Clonality	Polyclonal

Epigen Polyclonal Antibody - Additional Information

Gene ID 255324

Other Names

EPGN; Epigen; Epithelial mitogen; EPG

Dilution

WB~~Western Blot: 1/500 - 1/2000. ELISA: 1/10000. Not yet tested in other applications.

Format

Liquid in PBS containing 50% glycerol, 0.5% BSA and 0.09% (W/V) sodium azide.

Storage Conditions

-20°C

Epigen Polyclonal Antibody - Protein Information

Name EPGN

Function

Promotes the growth of epithelial cells. May stimulate the phosphorylation of EGFR and mitogen-activated protein kinases.

Cellular Location

[Isoform 1]: Membrane; Single-pass type I membrane protein [Isoform 3]: Secreted. [Isoform 5]: Secreted.

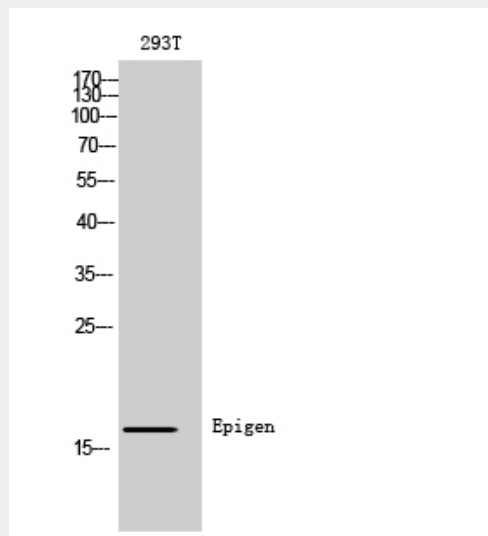
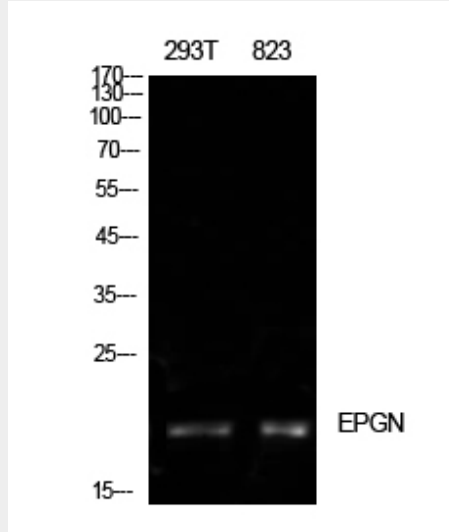
Epigen Polyclonal Antibody - Protocols

Provided below are standard protocols that you may find useful for product applications.

- [Western Blot](#)
- [Blocking Peptides](#)
- [Dot Blot](#)

- [Immunohistochemistry](#)
- [Immunofluorescence](#)
- [Immunoprecipitation](#)
- [Flow Cytometry](#)
- [Cell Culture](#)

Epigen Polyclonal Antibody - Images



Epigen Polyclonal Antibody - Background

Promotes the growth of epithelial cells. May stimulate the phosphorylation of EGFR and mitogen-activated protein kinases.