

Amphiregulin Polyclonal Antibody
Catalog # AP73827**Specification**

Amphiregulin Polyclonal Antibody - Product Information

Application	WB
Primary Accession	P15514
Reactivity	Human
Host	Rabbit
Clonality	Polyclonal

Amphiregulin Polyclonal Antibody - Additional Information

Gene ID 374

Other Names

AREG; SDGF; AREGB; Amphiregulin; AR; Colorectum cell-derived growth factor; CRDGF

Dilution

WB~~Western Blot: 1/500 - 1/2000. ELISA: 1/10000. Not yet tested in other applications.

Format

Liquid in PBS containing 50% glycerol, 0.5% BSA and 0.09% (W/V) sodium azide.

Storage Conditions

-20°C

Amphiregulin Polyclonal Antibody - Protein Information

Name AREG ([HGNC:651](#))

Function

Ligand of the EGF receptor/EGFR. Autocrine growth factor as well as a mitogen for a broad range of target cells including astrocytes, Schwann cells and fibroblasts.

Cellular Location

Membrane; Single-pass membrane protein.

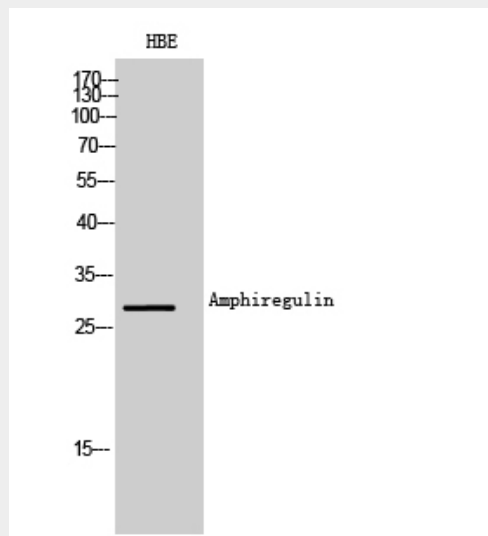
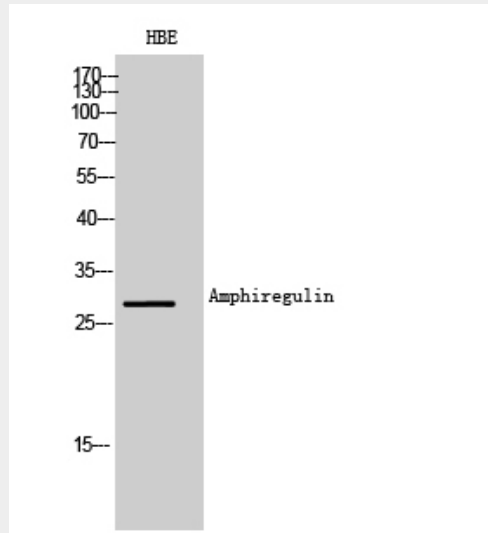
Amphiregulin Polyclonal Antibody - Protocols

Provided below are standard protocols that you may find useful for product applications.

- [Western Blot](#)
- [Blocking Peptides](#)
- [Dot Blot](#)
- [Immunohistochemistry](#)

- [Immunofluorescence](#)
- [Immunoprecipitation](#)
- [Flow Cytometry](#)
- [Cell Culture](#)

Amphiregulin Polyclonal Antibody - Images



Amphiregulin Polyclonal Antibody - Background

Ligand of the EGF receptor/EGFR. Autocrine growth factor as well as a mitogen for a broad range of target cells including astrocytes, Schwann cells and fibroblasts.