

**Probetacellulin Polyclonal Antibody**  
Catalog # AP73825**Specification**

---

**Probetacellulin Polyclonal Antibody - Product Information**

Application	WB
Primary Accession	<a href="#">P35070</a>
Reactivity	Human
Host	Rabbit
Clonality	Polyclonal

**Probetacellulin Polyclonal Antibody - Additional Information****Gene ID** 685**Other Names**

BTC; Probetacellulin

**Dilution**

WB~~Western Blot: 1/500 - 1/2000. ELISA: 1/10000. Not yet tested in other applications.

**Format**

Liquid in PBS containing 50% glycerol, 0.5% BSA and 0.09% (W/V) sodium azide.

**Storage Conditions**

-20°C

**Probetacellulin Polyclonal Antibody - Protein Information****Name** BTC**Function**

Growth factor that binds to EGFR, ERBB4 and other EGF receptor family members. Potent mitogen for retinal pigment epithelial cells and vascular smooth muscle cells.

**Cellular Location**

[Betacellulin]: Secreted, extracellular space.

**Tissue Location**

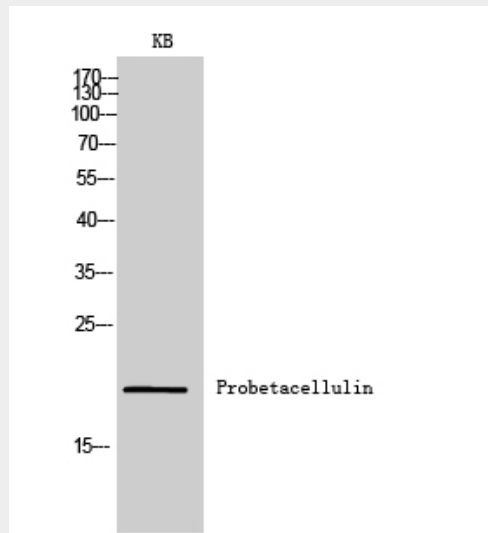
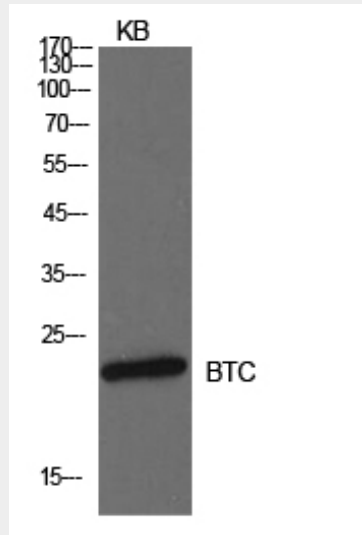
Synthesized in several tissues and tumor cells. Predominantly expressed in pancreas and small intestine

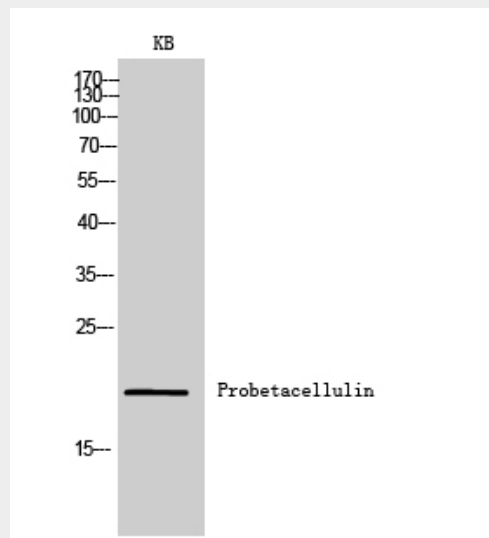
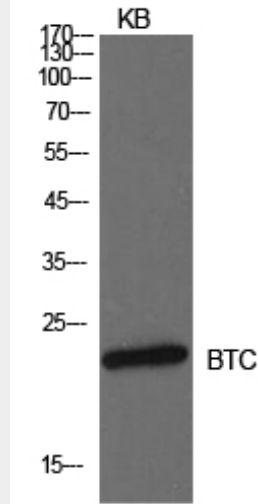
**Probetacellulin Polyclonal Antibody - Protocols**

Provided below are standard protocols that you may find useful for product applications.

- [Western Blot](#)
- [Blocking Peptides](#)
- [Dot Blot](#)
- [Immunohistochemistry](#)
- [Immunofluorescence](#)
- [Immunoprecipitation](#)
- [Flow Cytometry](#)
- [Cell Culture](#)

### Probetacellulin Polyclonal Antibody - Images





### **Probetacellulin Polyclonal Antibody - Background**

Growth factor that binds to EGFR, ERBB4 and other EGF receptor family members. Potent mitogen for retinal pigment epithelial cells and vascular smooth muscle cells.