

CD206 Polyclonal Antibody
Catalog # AP73823**Specification**

CD206 Polyclonal Antibody - Product Information

Application	WB
Primary Accession	P22897
Reactivity	Human
Host	Rabbit
Clonality	Polyclonal

CD206 Polyclonal Antibody - Additional Information**Gene ID** 4360**Other Names**

MRC1; CLEC13D; CLEC13DL; MRC1L1; Macrophage mannose receptor 1; MMR; C-type lectin domain family 13 member D; C-type lectin domain family 13 member D-like; Macrophage mannose receptor 1-like protein 1; CD206

Dilution

WB~~Western Blot: 1/500 - 1/2000. IHC-p: 1:100-1:300. ELISA: 1/10000. Not yet tested in other applications.

Format

Liquid in PBS containing 50% glycerol, 0.5% BSA and 0.09% (W/V) sodium azide.

Storage Conditions

-20°C

CD206 Polyclonal Antibody - Protein Information**Name** MRC1**Synonyms** CLEC13D, CLEC13DL, MRC1L1**Function**

Mediates the endocytosis of glycoproteins by macrophages. Binds both sulfated and non-sulfated polysaccharide chains. (Microbial infection) Acts as a receptor for Dengue virus envelope protein E.

Cellular Location

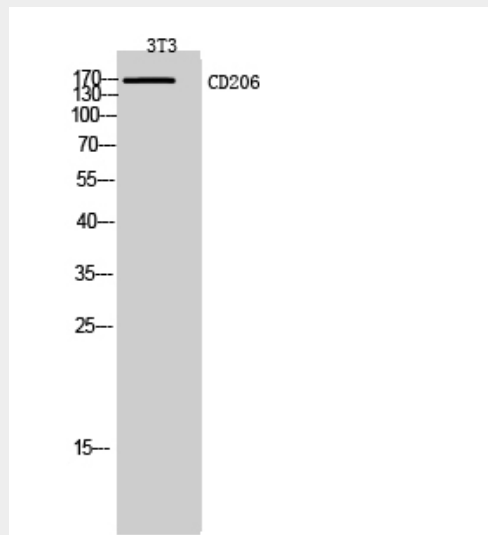
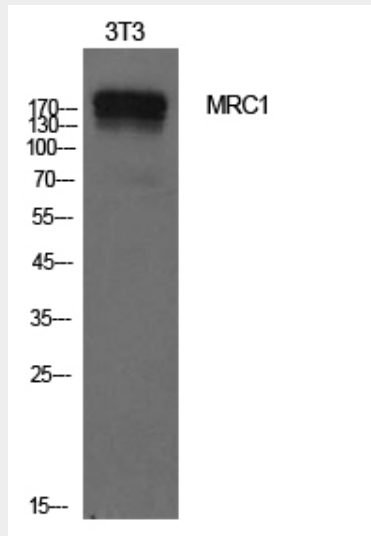
Endosome membrane; Single-pass type I membrane protein. Cell membrane; Single-pass type I membrane protein

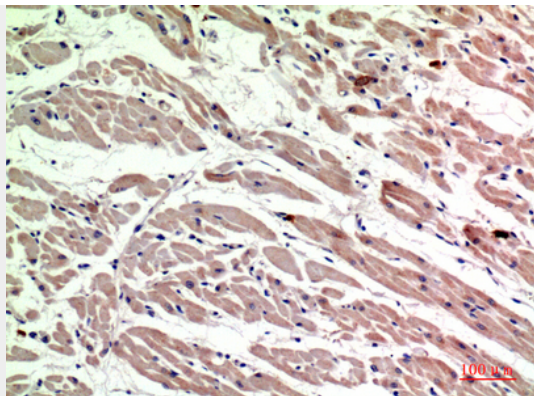
CD206 Polyclonal Antibody - Protocols

Provided below are standard protocols that you may find useful for product applications.

- [Western Blot](#)
- [Blocking Peptides](#)
- [Dot Blot](#)
- [Immunohistochemistry](#)
- [Immunofluorescence](#)
- [Immunoprecipitation](#)
- [Flow Cytometry](#)
- [Cell Culture](#)

CD206 Polyclonal Antibody - Images





CD206 Polyclonal Antibody - Background

Mediates the endocytosis of glycoproteins by macrophages. Binds both sulfated and non-sulfated polysaccharide chains. (Microbial infection) Acts as a receptor for Dengue virus envelope protein E.