

**CTSH Antibody (N-term)**  
**Purified Rabbit Polyclonal Antibody (Pab)**  
**Catalog # AP7380a****Specification**

---

**CTSH Antibody (N-term) - Product Information**

Application	<b>WB, IHC-P, FC,E</b>
Primary Accession	<a href="#">P09668</a>
Reactivity	<b>Human</b>
Host	<b>Rabbit</b>
Clonality	<b>Polyclonal</b>
Isotype	<b>Rabbit IgG</b>
Calculated MW	<b>37394</b>
Antigen Region	<b>25-54</b>

**CTSH Antibody (N-term) - Additional Information****Gene ID** 1512**Other Names**

Pro-cathepsin H, Cathepsin H mini chain, Cathepsin H, Cathepsin H heavy chain, Cathepsin H light chain, CTSH, CPSB

**Target/Specificity**

This CTSH antibody is generated from rabbits immunized with a KLH conjugated synthetic peptide between 25-54 amino acids from the N-terminal region of human CTSH.

**Dilution**WB~~1:1000  
IHC-P~~1:50~100  
FC~~1:10~50**Format**

Purified polyclonal antibody supplied in PBS with 0.09% (W/V) sodium azide. This antibody is prepared by Saturated Ammonium Sulfate (SAS) precipitation followed by dialysis against PBS.

**Storage**

Maintain refrigerated at 2-8°C for up to 2 weeks. For long term storage store at -20°C in small aliquots to prevent freeze-thaw cycles.

**Precautions**

CTSH Antibody (N-term) is for research use only and not for use in diagnostic or therapeutic procedures.

**CTSH Antibody (N-term) - Protein Information****Name** CTSH

## Synonyms CPSB

**Function** Important for the overall degradation of proteins in lysosomes.

## Cellular Location

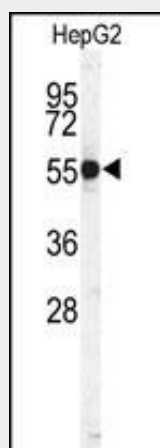
Lysosome.

## CTSH Antibody (N-term) - Protocols

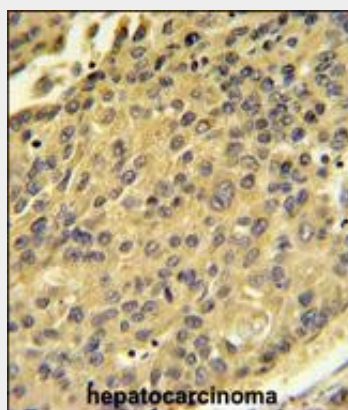
Provided below are standard protocols that you may find useful for product applications.

- [Western Blot](#)
- [Blocking Peptides](#)
- [Dot Blot](#)
- [Immunohistochemistry](#)
- [Immunofluorescence](#)
- [Immunoprecipitation](#)
- [Flow Cytometry](#)
- [Cell Culture](#)

## CTSH Antibody (N-term) - Images

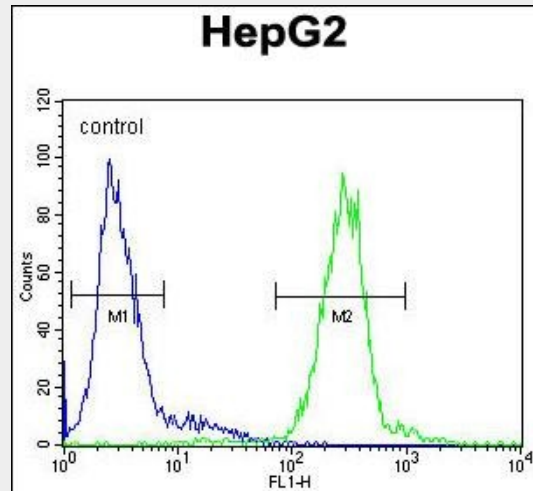


Western blot analysis of CTSH Antibody (N-term) (Cat.# AP7380a) in HepG2 cell line lysates (35ug/lane). CTSH (arrow) was detected using the purified Pab.



CTSH Antibody (N-term) (Cat.# AP7380a) IHC analysis in formalin fixed and paraffin embedded

human hepatocarcinoma followed by peroxidase conjugation of the secondary antibody and DAB staining. This data demonstrates the use of the CTSH Antibody (N-term) for immunohistochemistry. Clinical relevance has not been evaluated.



CTSH Antibody (N-term) (Cat. #AP7380a) flow cytometric analysis of HepG2 cells (right histogram) compared to a negative control cell (left histogram). FITC-conjugated goat-anti-rabbit secondary antibodies were used for the analysis.

#### **CTSH Antibody (N-term) - Background**

The protein is a lysosomal cysteine proteinase important in the overall degradation of lysosomal proteins. It is composed of a dimer of disulfide-linked heavy and light chains, both produced from a single protein precursor. The protein, which belongs to the peptidase C1 protein family, can act both as an aminopeptidase and as an endopeptidase. Increased expression of its gene has been correlated with malignant progression of prostate tumors.

#### **CTSH Antibody (N-term) - References**

- Bunatova, K., *Int. J. Biol. Markers* 24 (1), 47-51 (2009)
- Decock, J., *Int. J. Biol. Markers* 23 (3), 161-168 (2008)