

**CD30-L Polyclonal Antibody**  
Catalog # AP73805**Specification**

---

**CD30-L Polyclonal Antibody - Product Information**

Application	<b>WB</b>
Primary Accession	<a href="#">P32971</a>
Reactivity	<b>Human</b>
Host	<b>Rabbit</b>
Clonality	<b>Polyclonal</b>

**CD30-L Polyclonal Antibody - Additional Information****Gene ID** 944**Other Names**

TNFSF8; CD30L; CD30LG; Tumor necrosis factor ligand superfamily member 8; CD30 ligand; CD30-L; CD153

**Dilution**

WB~~Western Blot: 1/500 - 1/2000. ELISA: 1/10000. Not yet tested in other applications.

**Format**

Liquid in PBS containing 50% glycerol, 0.5% BSA and 0.09% (W/V) sodium azide.

**Storage Conditions**

-20°C

**CD30-L Polyclonal Antibody - Protein Information****Name** TNFSF8**Synonyms** CD30L, CD30LG**Function**

Cytokine that binds to TNFRSF8/CD30. Induces proliferation of T-cells.

**Cellular Location**

Membrane; Single-pass type II membrane protein.

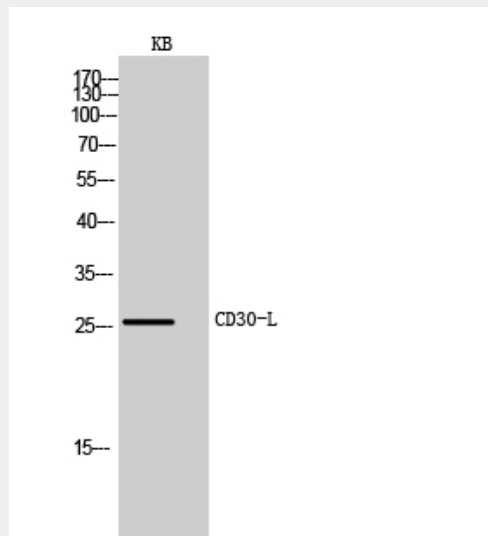
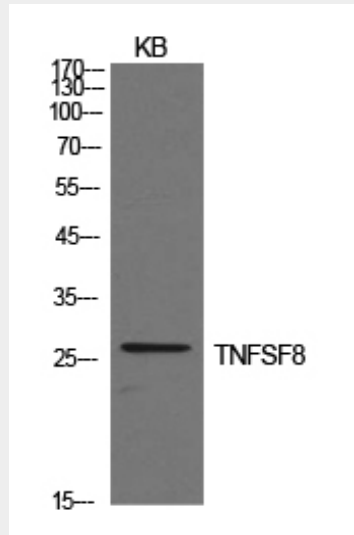
**CD30-L Polyclonal Antibody - Protocols**

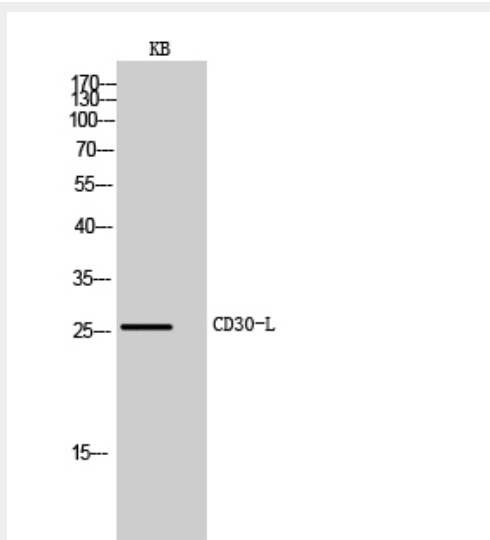
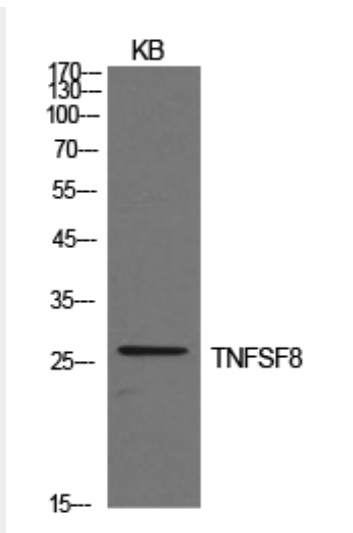
Provided below are standard protocols that you may find useful for product applications.

- [Western Blot](#)
- [Blocking Peptides](#)

- [Dot Blot](#)
- [Immunohistochemistry](#)
- [Immunofluorescence](#)
- [Immunoprecipitation](#)
- [Flow Cytometry](#)
- [Cell Culture](#)

### CD30-L Polyclonal Antibody - Images





### CD30-L Polyclonal Antibody - Background

Cytokine that binds to TNFRSF8/CD30. Induces proliferation of T-cells.