

IL-13R α 2 Polyclonal Antibody
Catalog # AP73799**Specification**

IL-13R α 2 Polyclonal Antibody - Product Information

Application	WB
Primary Accession	Q14627
Reactivity	Human
Host	Rabbit
Clonality	Polyclonal

IL-13R α 2 Polyclonal Antibody - Additional Information**Gene ID** 3598**Other Names**

IL13RA2; IL13R; Interleukin-13 receptor subunit alpha-2; IL-13 receptor subunit alpha-2; IL-13R subunit alpha-2; IL-13R-alpha-2; IL-13RA2; Interleukin-13-binding protein; CD213a2

Dilution

WB~~Western Blot: 1/500 - 1/2000. IHC-p: 1:100-1:300. ELISA: 1/10000. Not yet tested in other applications.

Format

Liquid in PBS containing 50% glycerol, 0.5% BSA and 0.09% (W/V) sodium azide.

Storage Conditions

-20°C

IL-13R α 2 Polyclonal Antibody - Protein Information**Name** IL13RA2**Synonyms** IL13R**Function**

Binds as a monomer with high affinity to interleukin-13 (IL13), but not to interleukin-4 (IL4).

Cellular Location

Membrane; Single-pass type I membrane protein.

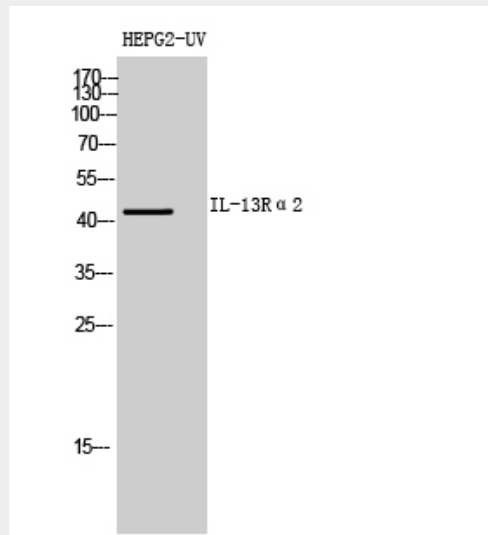
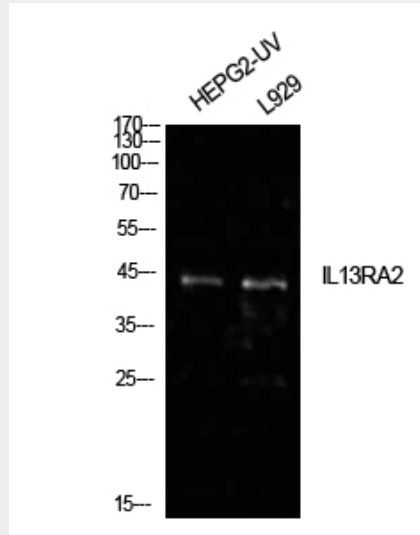
IL-13R α 2 Polyclonal Antibody - Protocols

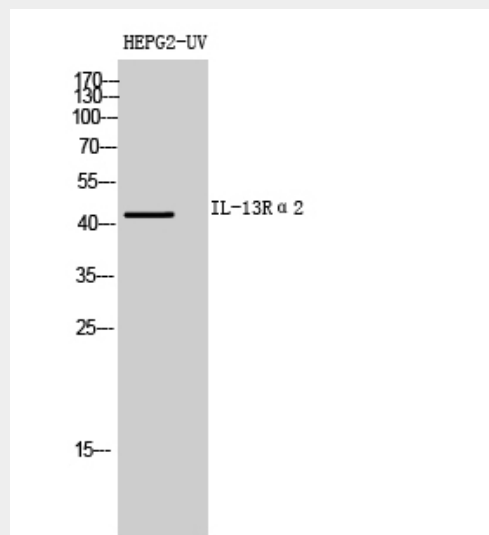
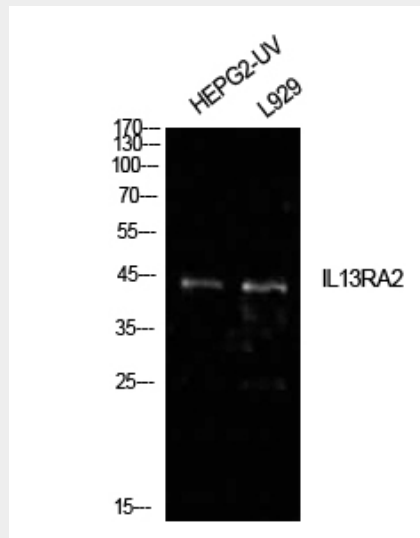
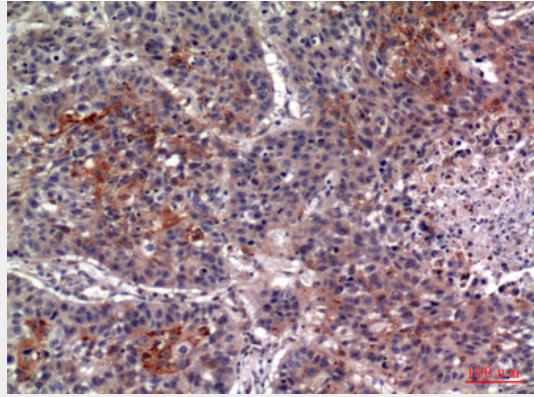
Provided below are standard protocols that you may find useful for product applications.

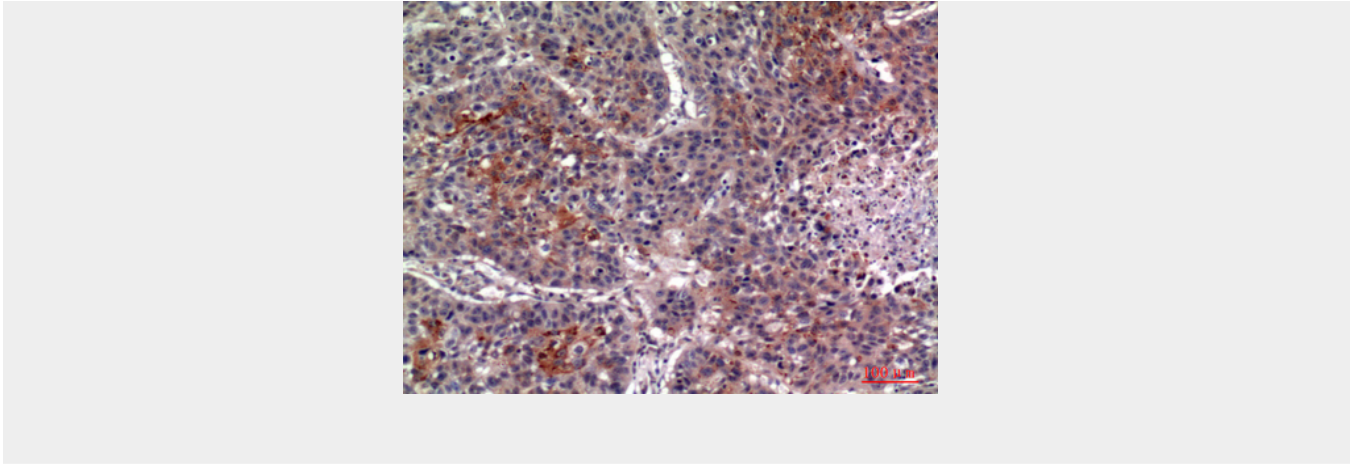
- [Western Blot](#)

- [Blocking Peptides](#)
- [Dot Blot](#)
- [Immunohistochemistry](#)
- [Immunofluorescence](#)
- [Immunoprecipitation](#)
- [Flow Cytometry](#)
- [Cell Culture](#)

IL-13R α 2 Polyclonal Antibody - Images







IL-13R α 2 Polyclonal Antibody - Background

Binds as a monomer with high affinity to interleukin-13 (IL13), but not to interleukin-4 (IL4).