

**Integrin  $\alpha$ 6 Polyclonal Antibody**  
Catalog # AP73773**Specification****Integrin  $\alpha$ 6 Polyclonal Antibody - Product Information**

|                   |                        |
|-------------------|------------------------|
| Application       | WB                     |
| Primary Accession | <a href="#">P23229</a> |
| Reactivity        | Human, Mouse, Rat      |
| Host              | Rabbit                 |
| Clonality         | Polyclonal             |

**Integrin  $\alpha$ 6 Polyclonal Antibody - Additional Information****Gene ID** 3655**Other Names**

ITGA6; Integrin alpha-6; CD49 antigen-like family member F; VLA-6; CD49f

**Dilution**

WB~~Western Blot: 1/500 - 1/2000. ELISA: 1/10000. Not yet tested in other applications.

**Format**

Liquid in PBS containing 50% glycerol, 0.5% BSA and 0.09% (W/V) sodium azide.

**Storage Conditions**

-20°C

**Integrin  $\alpha$ 6 Polyclonal Antibody - Protein Information****Name** ITGA6**Function**

Integrin alpha-6/beta-1 (ITGA6:ITGB1) is a receptor for laminin on platelets (By similarity). Integrin alpha-6/beta-1 (ITGA6:ITGB1) is present in oocytes and is involved in sperm-egg fusion (By similarity). Integrin alpha-6/beta-4 (ITGA6:ITGB4) is a receptor for laminin in epithelial cells and it plays a critical structural role in the hemidesmosome (By similarity). ITGA6:ITGB4 binds to NRG1 (via EGF domain) and this binding is essential for NRG1-ERBB signaling (PubMed:<a href="http://www.uniprot.org/citations/20682778" target="\_blank">20682778</a>). ITGA6:ITGB4 binds to IGF1 and this binding is essential for IGF1 signaling (PubMed:<a href="http://www.uniprot.org/citations/22351760" target="\_blank">22351760</a>). ITGA6:ITGB4 binds to IGF2 and this binding is essential for IGF2 signaling (PubMed:<a href="http://www.uniprot.org/citations/28873464" target="\_blank">28873464</a>).

**Cellular Location**

Cell membrane; Single-pass type I membrane protein. Cell membrane; Lipid-anchor

**Tissue Location**

Integrin alpha-6/beta-4 is predominantly expressed by epithelia. Isoforms containing segment X1

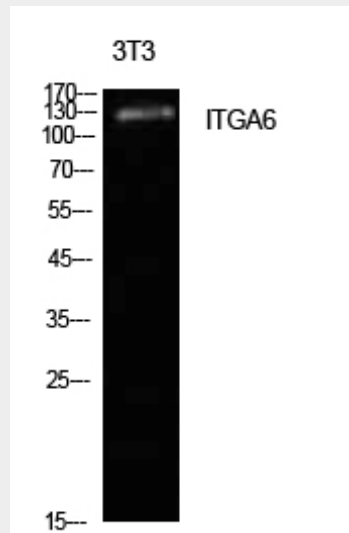
are ubiquitously expressed. Isoforms containing segment X1X2 are expressed in heart, kidney, placenta, colon, duodenum, myoblasts and myotubes, and in a limited number of cell lines; they are always coexpressed with the ubiquitous isoform containing segment X1. In some tissues (e.g. Salivary gland), isoforms containing cytoplasmic segment A and isoforms containing segment B are detected while in others, only isoforms containing one cytoplasmic segment are found (segment A in epidermis and segment B in kidney). Processed integrin alpha-6: Expressed at low levels in normal prostate tissue with elevated levels in prostate cancer tissue (at protein level) (PubMed:15023541)

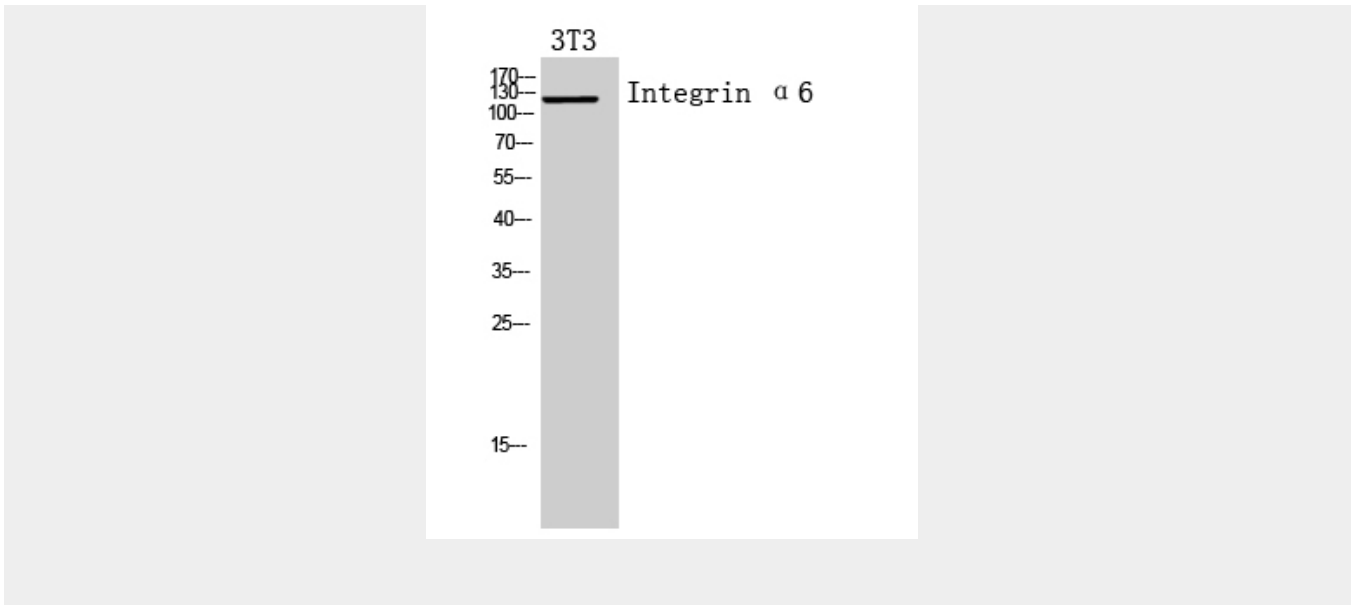
### Integrin $\alpha 6$ Polyclonal Antibody - Protocols

Provided below are standard protocols that you may find useful for product applications.

- [Western Blot](#)
- [Blocking Peptides](#)
- [Dot Blot](#)
- [Immunohistochemistry](#)
- [Immunofluorescence](#)
- [Immunoprecipitation](#)
- [Flow Cytometry](#)
- [Cell Culture](#)

### Integrin $\alpha 6$ Polyclonal Antibody - Images





### Integrin $\alpha$ 6 Polyclonal Antibody - Background

Integrin alpha-6/beta-1 (ITGA6:ITGB1) is a receptor for laminin on platelets (By similarity). Integrin alpha-6/beta-1 (ITGA6:ITGB1) is present in oocytes and is involved in sperm-egg fusion (By similarity). Integrin alpha-6/beta-4 (ITGA6:ITGB4) is a receptor for laminin in epithelial cells and it plays a critical structural role in the hemidesmosome (By similarity). ITGA6:ITGB4 binds to NRG1 (via EGF domain) and this binding is essential for NRG1-ERBB signaling (PubMed:20682778). ITGA6:ITGB4 binds to IGF1 and this binding is essential for IGF1 signaling (PubMed:22351760). ITGA6:ITGB4 binds to IGF2 and this binding is essential for IGF2 signaling (PubMed:28873464).