

CD21 Polyclonal Antibody
Catalog # AP73765**Specification****CD21 Polyclonal Antibody - Product Information**

Application	WB
Primary Accession	P20023
Reactivity	Human
Host	Rabbit
Clonality	Polyclonal

CD21 Polyclonal Antibody - Additional Information**Gene ID** 1380**Other Names**

CR2; C3DR; Complement receptor type 2; Cr2; Complement C3d receptor; Epstein-Barr virus receptor; EBV receptor; CD21

Dilution

WB~~Western Blot: 1/500 - 1/2000. IHC-p: 1:100-1:300. ELISA: 1/10000. Not yet tested in other applications.

Format

Liquid in PBS containing 50% glycerol, 0.5% BSA and 0.09% (W/V) sodium azide.

Storage Conditions

-20°C

CD21 Polyclonal Antibody - Protein Information**Name** CR2**Synonyms** C3DR**Function**

Serves as a receptor for various ligands including complement component CD3d, HNRNPU OR IFNA1 (PubMed: [1849076](http://www.uniprot.org/citations/1849076), PubMed: [21527715](http://www.uniprot.org/citations/21527715), PubMed: [7753047](http://www.uniprot.org/citations/7753047)). When C3d is bound to antigens, attaches to C3d on B- cell surface and thereby facilitates the recognition and uptake of antigens by B-cells (PubMed: [21527715](http://www.uniprot.org/citations/21527715)). This interaction enhances B-cell activation and subsequent immune responses. Forms a complex with several partners on the surface of B-cells including CD19, FCRL5 and CD81, to form the B-cell coreceptor complex that plays a crucial role in B-cell activation and signaling (PubMed: [1383329](http://www.uniprot.org/citations/1383329), PubMed: [30107486](http://www.uniprot.org/citations/30107486)). Induces also

specific intracellular signaling separately from the BCR and CD19 by activating the tyrosine kinase SRC, which then phosphorylates nucleolin/NCL and triggers AKT and GSK3 kinase activities in a SYK/CD19-independent manner (PubMed:12938232). Acts as a ligand for CD23 (FcεpsilonRII), a low-affinity receptor for IgE, which is expressed on B-cells and other immune cells, and thus participates in the regulation of IgE production (PubMed:1386409).

Cellular Location

Cell membrane; Single-pass type I membrane protein

Tissue Location

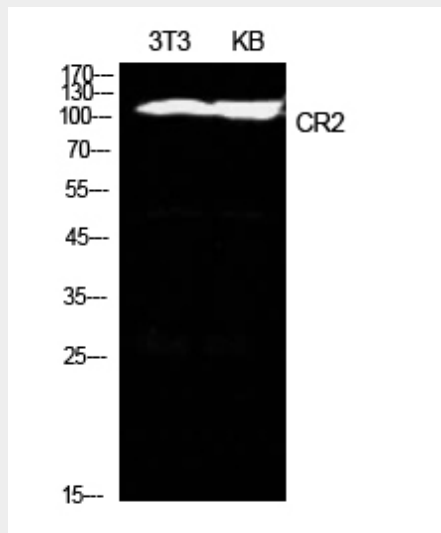
Mature B-lymphocytes, T-lymphocytes, pharyngeal epithelial cells, astrocytes and follicular dendritic cells of the spleen

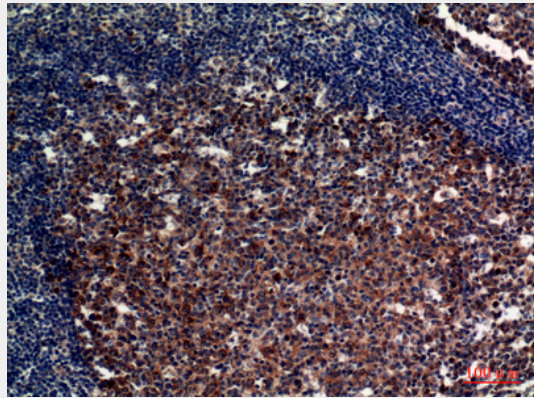
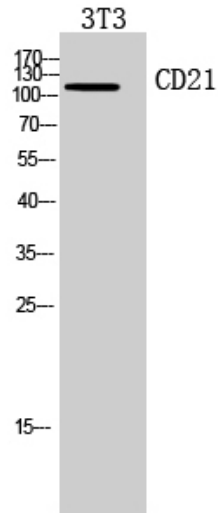
CD21 Polyclonal Antibody - Protocols

Provided below are standard protocols that you may find useful for product applications.

- [Western Blot](#)
- [Blocking Peptides](#)
- [Dot Blot](#)
- [Immunohistochemistry](#)
- [Immunofluorescence](#)
- [Immunoprecipitation](#)
- [Flow Cytometry](#)
- [Cell Culture](#)

CD21 Polyclonal Antibody - Images





CD21 Polyclonal Antibody - Background

Receptor for complement C3, for the Epstein-Barr virus on human B-cells and T-cells and for HNRNPU (PubMed:7753047). Participates in B lymphocytes activation (PubMed:7753047).