

SOD-2 Polyclonal Antibody
Catalog # AP73758**Specification**

SOD-2 Polyclonal Antibody - Product Information

| | |
|-------------------|------------------------|
| Application | IHC |
| Primary Accession | P04179 |
| Reactivity | Human, Mouse, Rat |
| Host | Rabbit |
| Clonality | Polyclonal |

SOD-2 Polyclonal Antibody - Additional Information**Gene ID** 6648**Other Names**

SOD2; Superoxide dismutase [Mn], mitochondrial

Dilution

IHC~~IHC-p: 100-300. Western Blot: 1/500 - 1/2000. ELISA: 1/10000. Not yet tested in other applications.

Format

Liquid in PBS containing 50% glycerol, 0.5% BSA and 0.09% (W/V) sodium azide.

Storage Conditions

-20°C

SOD-2 Polyclonal Antibody - Protein Information**Name** SOD2**Function**

Destroys superoxide anion radicals which are normally produced within the cells and which are toxic to biological systems.

Cellular Location

Mitochondrion matrix.

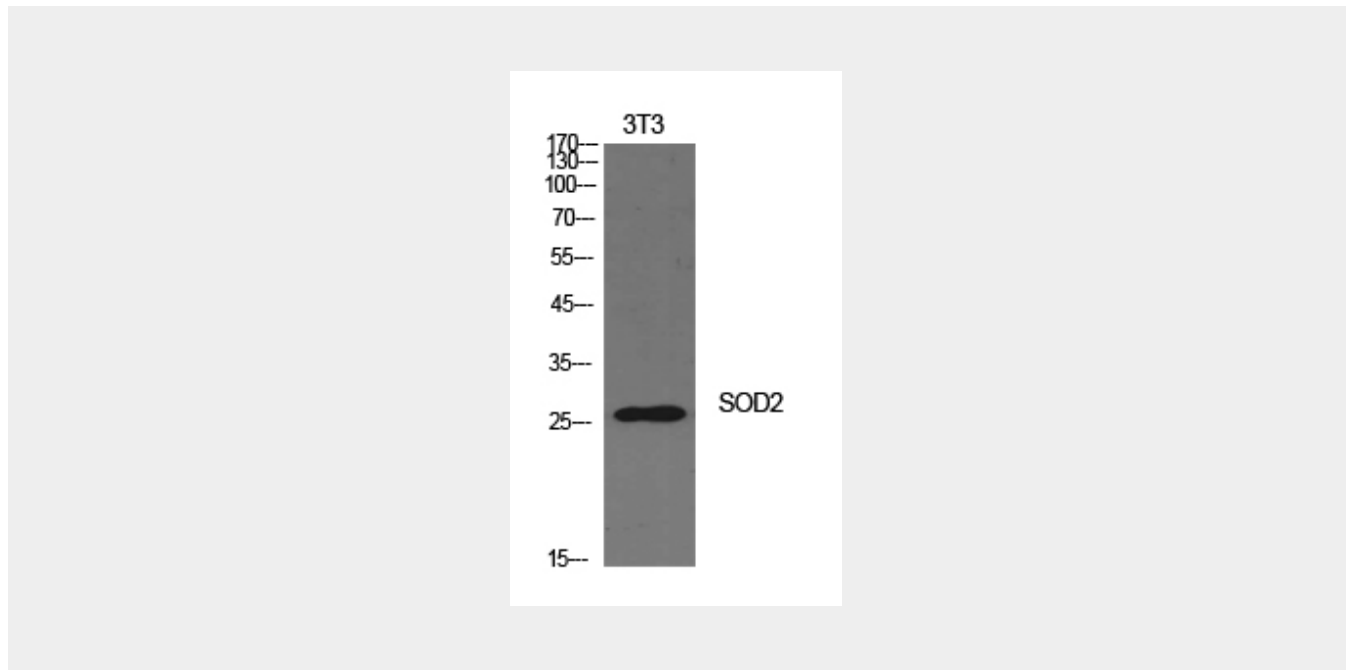
SOD-2 Polyclonal Antibody - Protocols

Provided below are standard protocols that you may find useful for product applications.

- [Western Blot](#)
- [Blocking Peptides](#)
- [Dot Blot](#)

- [Immunohistochemistry](#)
- [Immunofluorescence](#)
- [Immunoprecipitation](#)
- [Flow Cytometry](#)
- [Cell Culture](#)

SOD-2 Polyclonal Antibody - Images



SOD-2 Polyclonal Antibody - Background

Destroys superoxide anion radicals which are normally produced within the cells and which are toxic to biological systems.