

VPAC1 Polyclonal Antibody
Catalog # AP73757**Specification**

VPAC1 Polyclonal Antibody - Product Information

Application	WB
Primary Accession	P32241
Reactivity	Human
Host	Rabbit
Clonality	Polyclonal

VPAC1 Polyclonal Antibody - Additional Information**Gene ID** 7433**Other Names**

VIPR1; Vasoactive intestinal polypeptide receptor 1; VIP-R-1; Pituitary adenylate cyclase-activating polypeptide type II receptor; PACAP type II receptor; PACAP-R-2; PACAP-R2; VPAC1

Dilution

WB~~Western Blot: 1/500 - 1/2000. ELISA: 1/10000. Not yet tested in other applications.

Format

Liquid in PBS containing 50% glycerol, 0.5% BSA and 0.09% (W/V) sodium azide.

Storage Conditions

-20°C

VPAC1 Polyclonal Antibody - Protein Information**Name** VIPR1**Function**

This is a receptor for VIP. The activity of this receptor is mediated by G proteins which activate adenylyl cyclase. The affinity is VIP = PACAP-27 > PACAP-38.

Cellular Location

Cell membrane; Multi-pass membrane protein.

Tissue Location

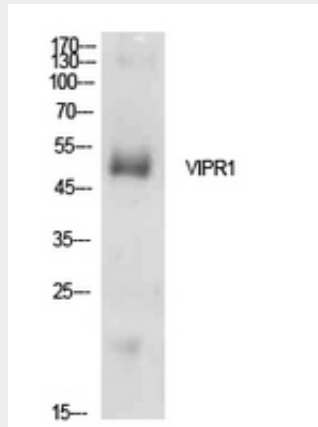
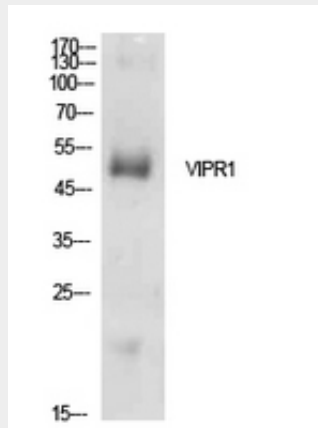
In lung, HT-29 colonic epithelial cells, Raji B- lymphoblasts. Lesser extent in brain, heart, kidney, liver and placenta. Not expressed in CD4+ or CD8+ T-cells. Expressed in the T- cell lines HARRIS, HuT 78, Jurkat and SUP-T1, but not in the T-cell lines Peer, MOLT-4, HSB and YT.

VPAC1 Polyclonal Antibody - Protocols

Provided below are standard protocols that you may find useful for product applications.

- [Western Blot](#)
- [Blocking Peptides](#)
- [Dot Blot](#)
- [Immunohistochemistry](#)
- [Immunofluorescence](#)
- [Immunoprecipitation](#)
- [Flow Cytometry](#)
- [Cell Culture](#)

VPAC1 Polyclonal Antibody - Images



VPAC1 Polyclonal Antibody - Background

This is a receptor for VIP. The activity of this receptor is mediated by G proteins which activate adenylyl cyclase. The affinity is VIP = PACAP-27 > PACAP-38.