

PSA Polyclonal Antibody
Catalog # AP73734**Specification**

PSA Polyclonal Antibody - Product Information

Application	WB
Primary Accession	P07288
Reactivity	Human
Host	Rabbit
Clonality	Polyclonal

PSA Polyclonal Antibody - Additional Information**Gene ID** 354**Other Names**

KLK3; APS; Prostate-specific antigen; PSA; Gamma-seminoprotein; Semin; Kallikrein-3; P-30 antigen; Semenogelase

Dilution

WB~~Western Blot: 1/500 - 1/2000. IHC-p: 1:100-1:300. ELISA: 1/10000. Not yet tested in other applications.

Format

Liquid in PBS containing 50% glycerol, 0.5% BSA and 0.09% (W/V) sodium azide.

Storage Conditions

-20°C

PSA Polyclonal Antibody - Protein Information**Name** KLK3**Synonyms** APS**Function**

Hydrolyzes semenogelin-1 thus leading to the liquefaction of the seminal coagulum.

Cellular Location

Secreted.

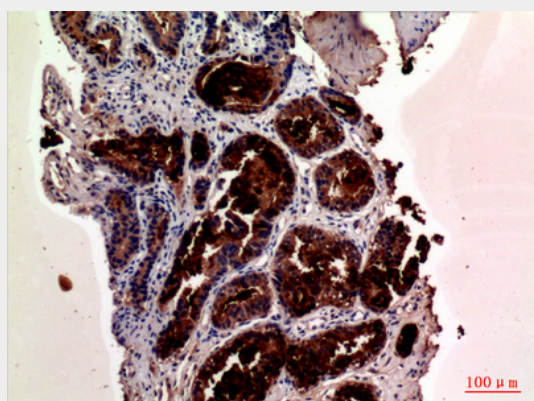
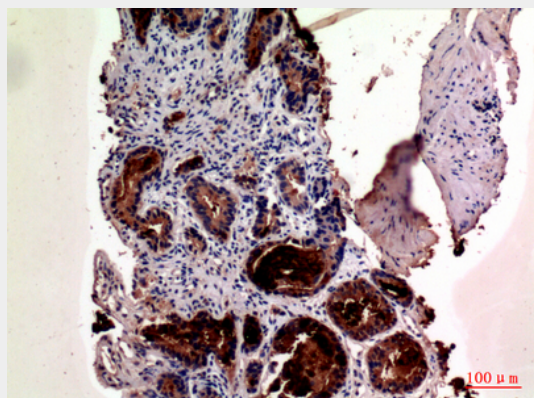
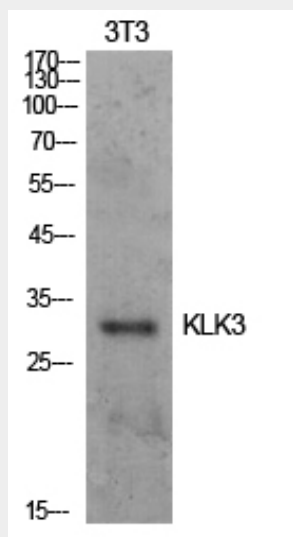
PSA Polyclonal Antibody - Protocols

Provided below are standard protocols that you may find useful for product applications.

- [Western Blot](#)

- [Blocking Peptides](#)
- [Dot Blot](#)
- [Immunohistochemistry](#)
- [Immunofluorescence](#)
- [Immunoprecipitation](#)
- [Flow Cytometry](#)
- [Cell Culture](#)

PSA Polyclonal Antibody - Images



PSA Polyclonal Antibody - Background

Hydrolyzes semenogelin-1 thus leading to the liquefaction of the seminal coagulum.