

**IL-6R $\alpha$  Polyclonal Antibody**  
Catalog # AP73729**Specification****IL-6R $\alpha$  Polyclonal Antibody - Product Information**

Application	IHC
Primary Accession	<a href="#">P08887</a>
Reactivity	Human
Host	Rabbit
Clonality	Polyclonal

**IL-6R $\alpha$  Polyclonal Antibody - Additional Information****Gene ID** 3570**Other Names**

IL6R; Interleukin-6 receptor subunit alpha; IL-6 receptor subunit alpha; IL-6R subunit alpha; IL-6R-alpha; IL-6RA; IL-6R 1; Membrane glycoprotein 80; gp80; CD126

**Dilution**

IHC~~IHC-p: 100-300. Western Blot: 1/500 - 1/2000. ELISA: 1/10000. Not yet tested in other applications.

**Format**

Liquid in PBS containing 50% glycerol, 0.5% BSA and 0.09% (W/V) sodium azide.

**Storage Conditions**

-20°C

**IL-6R $\alpha$  Polyclonal Antibody - Protein Information****Name** IL6R ([HGNC:6019](#))**Function**

Part of the receptor for interleukin 6. Binds to IL6 with low affinity, but does not transduce a signal (PubMed: [28265003](http://www.uniprot.org/citations/28265003)). Signal activation necessitate an association with IL6ST. Activation leads to the regulation of the immune response, acute-phase reactions and hematopoiesis (PubMed: [30995492](http://www.uniprot.org/citations/30995492), PubMed: [31235509](http://www.uniprot.org/citations/31235509)). The interaction with membrane-bound IL6R and IL6ST stimulates 'classic signaling', the restricted expression of the IL6R limits classic IL6 signaling to only a few tissues such as the liver and some cells of the immune system. Whereas the binding of IL6 and soluble IL6R to IL6ST stimulates 'trans- signaling'. Alternatively, 'cluster signaling' occurs when membrane- bound IL6:IL6R complexes on transmitter cells activate IL6ST receptors on neighboring receiver cells (Probable).

**Cellular Location**

[Isoform 1]: Cell membrane {ECO:0000250|UniProtKB:P22272}; Single-pass type I membrane

protein [Soluble interleukin-6 receptor subunit alpha]: Secreted

#### Tissue Location

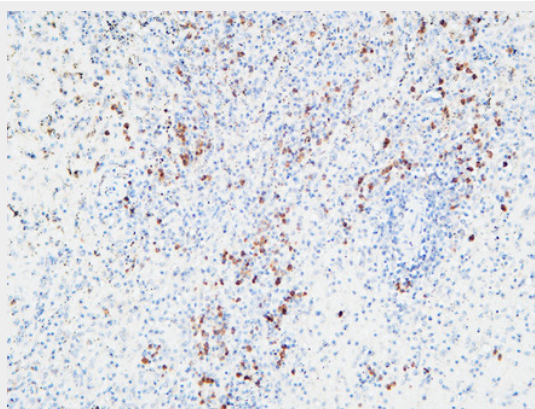
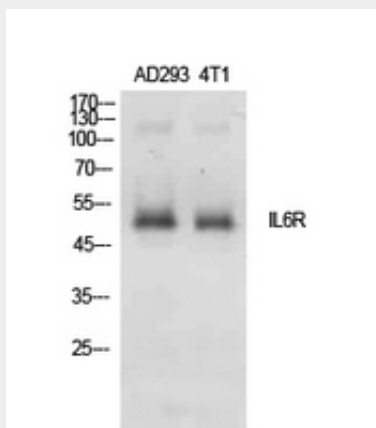
[Isoform 2]: Expressed in peripheral blood mononuclear cells and weakly found in urine and serum. 1%-20% of the total sIL6R in plasma is generated by alternative splicing (PubMed:28060820).

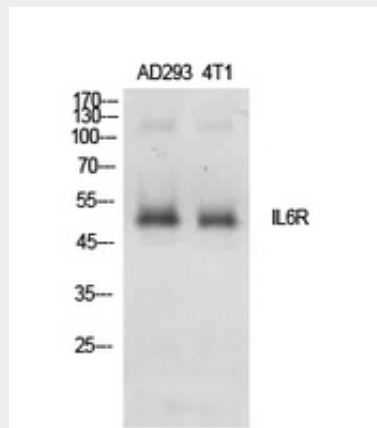
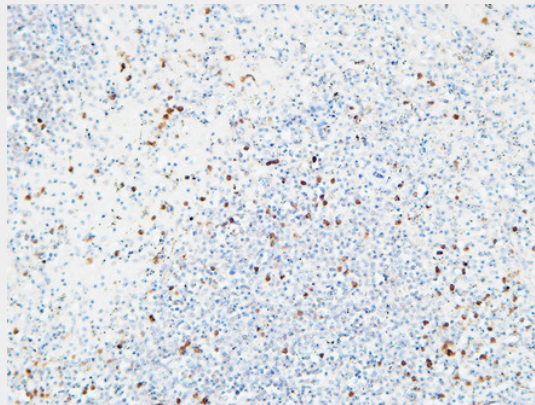
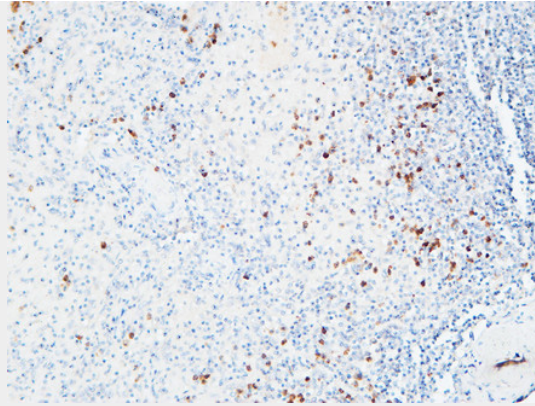
#### IL-6R $\alpha$ Polyclonal Antibody - Protocols

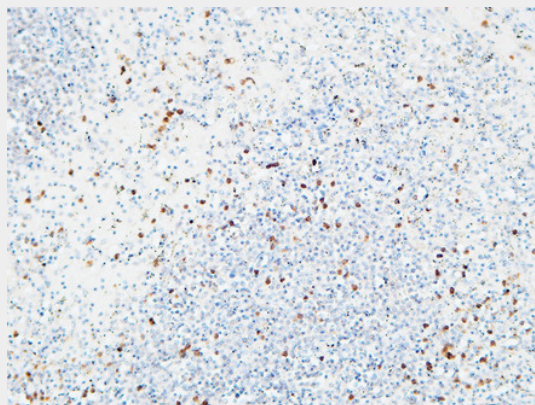
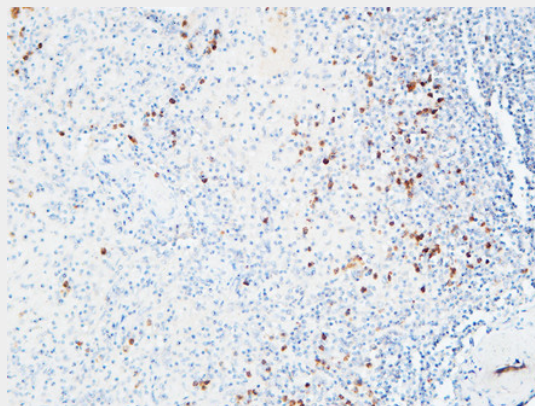
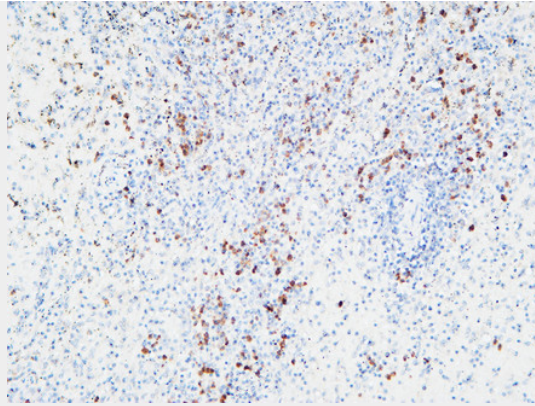
Provided below are standard protocols that you may find useful for product applications.

- [Western Blot](#)
- [Blocking Peptides](#)
- [Dot Blot](#)
- [Immunohistochemistry](#)
- [Immunofluorescence](#)
- [Immunoprecipitation](#)
- [Flow Cytometry](#)
- [Cell Culture](#)

#### IL-6R $\alpha$ Polyclonal Antibody - Images







### **IL-6R $\alpha$ Polyclonal Antibody - Background**

Part of the receptor for interleukin 6. Binds to IL6 with low affinity, but does not transduce a signal. Signal activation necessitate an association with IL6ST. Activation may lead to the regulation of the immune response, acute-phase reactions and hematopoiesis.