

Glut4 Polyclonal Antibody
Catalog # AP73706**Specification**

Glut4 Polyclonal Antibody - Product Information

Application	WB
Primary Accession	P14672
Reactivity	Human, Mouse, Rat
Host	Rabbit
Clonality	Polyclonal

Glut4 Polyclonal Antibody - Additional Information**Gene ID** 6517**Other Names**

SLC2A4; GLUT4; Solute carrier family 2, facilitated glucose transporter member 4; Glucose transporter type 4, insulin-responsive; GLUT-4

Dilution

WB~~WB 1:500-2000, ELISA 1:10000-20000 IHC 1:50-300

Format

Liquid in PBS containing 50% glycerol, 0.5% BSA and 0.09% (W/V) sodium azide.

Storage Conditions

-20°C

Glut4 Polyclonal Antibody - Protein Information**Name** SLC2A4 ([HGNC:11009](#))**Function**

Insulin-regulated facilitative glucose transporter, which plays a key role in removal of glucose from circulation. Response to insulin is regulated by its intracellular localization: in the absence of insulin, it is efficiently retained intracellularly within storage compartments in muscle and fat cells. Upon insulin stimulation, translocates from these compartments to the cell surface where it transports glucose from the extracellular milieu into the cell.

Cellular Location

Cell membrane {ECO:0000250|UniProtKB:P14142}; Multi-pass membrane protein {ECO:0000250|UniProtKB:P14142} Endomembrane system; Multi-pass membrane protein. Cytoplasm, perinuclear region {ECO:0000250|UniProtKB:P14142}. Note=Localizes primarily to the perinuclear region, undergoing continued recycling to the plasma membrane where it is rapidly reinternalized (PubMed:8300557). The dileucine internalization motif is critical for intracellular sequestration (PubMed:8300557). Insulin stimulation induces translocation to the cell membrane (By similarity) {ECO:0000250|UniProtKB:P14142, ECO:0000269|PubMed:8300557}

Tissue Location

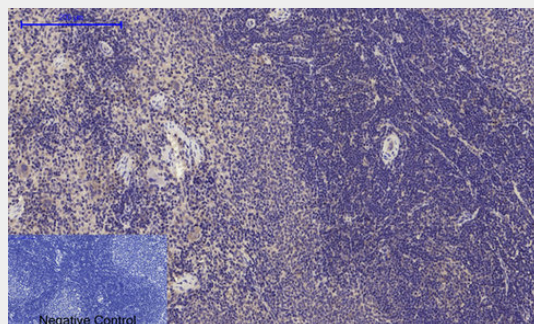
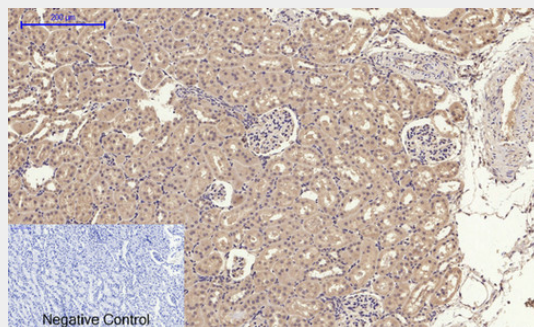
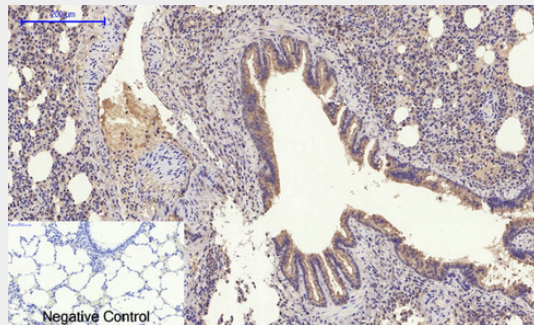
Skeletal and cardiac muscles; brown and white fat.

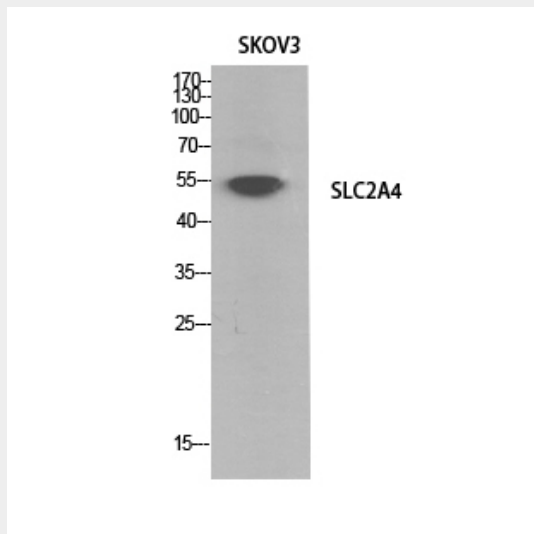
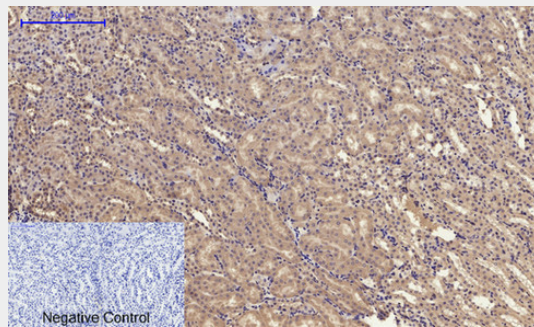
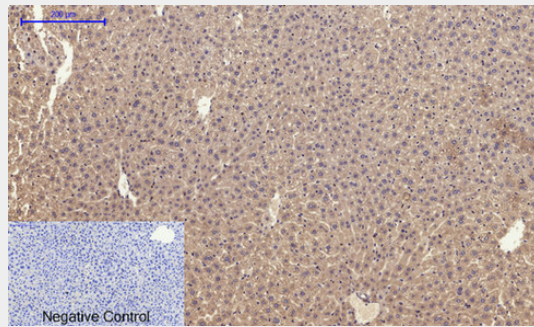
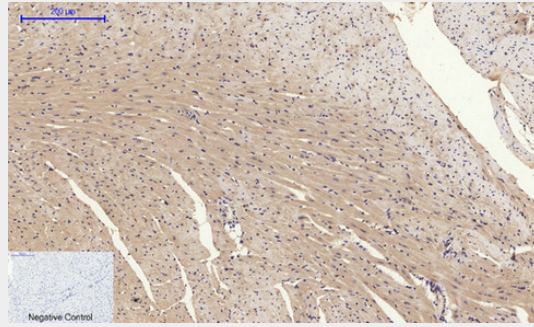
Glut4 Polyclonal Antibody - Protocols

Provided below are standard protocols that you may find useful for product applications.

- [Western Blot](#)
- [Blocking Peptides](#)
- [Dot Blot](#)
- [Immunohistochemistry](#)
- [Immunofluorescence](#)
- [Immunoprecipitation](#)
- [Flow Cytometry](#)
- [Cell Culture](#)

Glut4 Polyclonal Antibody - Images





Glut4 Polyclonal Antibody - Background

Insulin-regulated facilitative glucose transporter.