

**COL4A1 Antibody (N-term)**  
**Affinity Purified Rabbit Polyclonal Antibody (Pab)**  
**Catalog # AP7369a**

**Specification**

---

**COL4A1 Antibody (N-term) - Product Information**

Application	IF, WB,E
Primary Accession	<a href="#">P02462</a>
Other Accession	<a href="#">P02463</a>
Reactivity	Human
Host	Rabbit
Clonality	Polyclonal
Isotype	Rabbit IgG
Antigen Region	27-54

**COL4A1 Antibody (N-term) - Additional Information**

**Gene ID** 1282

**Other Names**

Collagen alpha-1(IV) chain, Arresten, COL4A1

**Target/Specificity**

This COL4A1 antibody is generated from rabbits immunized with a KLH conjugated synthetic peptide between 27-54 amino acids from the N-terminal region of human COL4A1.

**Dilution**

IF~~1:25

WB~~1:1000

**Format**

Purified polyclonal antibody supplied in PBS with 0.09% (W/V) sodium azide. This antibody is purified through a protein A column, followed by peptide affinity purification.

**Storage**

Maintain refrigerated at 2-8°C for up to 2 weeks. For long term storage store at -20°C in small aliquots to prevent freeze-thaw cycles.

**Precautions**

COL4A1 Antibody (N-term) is for research use only and not for use in diagnostic or therapeutic procedures.

**COL4A1 Antibody (N-term) - Protein Information**

**Name** COL4A1 ([HGNC:2202](#))

**Function** Type IV collagen is the major structural component of glomerular basement membranes (GBM), forming a 'chicken-wire' meshwork together with laminins, proteoglycans and

entactin/nidogen.

#### Cellular Location

Secreted, extracellular space, extracellular matrix, basement membrane  
{ECO:0000250|UniProtKB:P02463}

#### Tissue Location

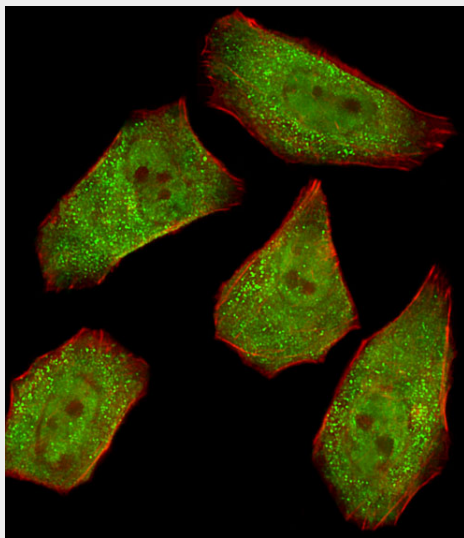
Highly expressed in placenta.

### COL4A1 Antibody (N-term) - Protocols

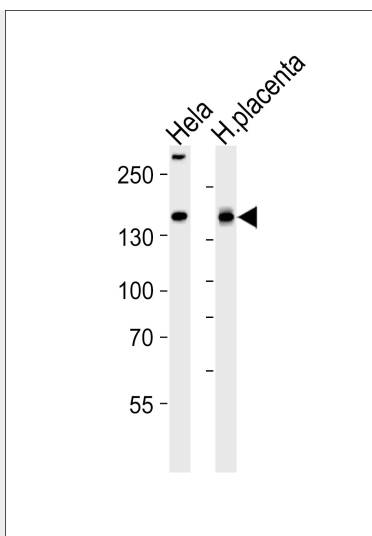
Provided below are standard protocols that you may find useful for product applications.

- [Western Blot](#)
- [Blocking Peptides](#)
- [Dot Blot](#)
- [Immunohistochemistry](#)
- [Immunofluorescence](#)
- [Immunoprecipitation](#)
- [Flow Cytometry](#)
- [Cell Culture](#)

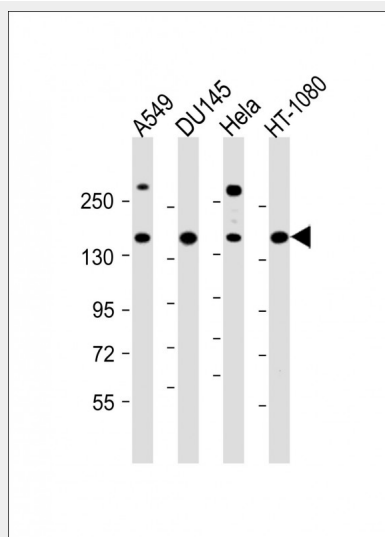
### COL4A1 Antibody (N-term) - Images



Fluorescent image of U251 cells stained with COL4A1 Antibody (N-term) (Cat#AP7369A). AP7369A was diluted at 1:25 dilution. An Alexa Fluor 488-conjugated goat anti-rabbit IgG at 1:400 dilution was used as the secondary antibody (green). Cytoplasmic actin was counterstained with Alexa Fluor® 555 conjugated with Phalloidin (red).



Western blot analysis of lysates from HeLa cell line and human placenta tissue lysate (from left to right), using COL4A1 Antibody (N-term) (Cat. #AP7369A). AP7369A was diluted at 1:1000 at each lane. A goat anti-rabbit IgG H&L (HRP) at 1:5000 dilution was used as the secondary antibody. Lysates at 35 µg per lane.



All lanes : Anti-COL4A1 Antibody (N-term) at 1:1000 dilution Lane 1: A549 whole cell lysate Lane 2: DU145 whole cell lysate Lane 3: HeLa whole cell lysate Lane 4: HT-1080 whole cell lysate Lysates/proteins at 20 µg per lane. Secondary Goat Anti-Rabbit IgG, (H+L), Peroxidase conjugated at 1/10000 dilution. Predicted band size : 161 kDa Blocking/Dilution buffer: 5% NFD/MBST.

### COL4A1 Antibody (N-term) - Background

COL4A1 is the major type IV alpha collagen chain of basement membranes. Like the other members of the type IV collagen gene family, this gene is organized in a head-to-head conformation with another type IV collagen gene so that each gene pair shares a common promoter.

### COL4A1 Antibody (N-term) - References

de Vries, L.S., *Ann. Neurol.* 65 (1), 12-18 (2009)  
Mazouni, C., *Br. J. Cancer* 99 (1), 68-71 (2008)

### COL4A1 Antibody (N-term) - Citations

- [Vitamin D-binding protein is required for the protective effects of vitamin D in renal](#)

- [fibroblasts and is phosphorylated in diabetic rats.](#)
- [MicroRNA-29a protects against acute liver injury in a mouse model of obstructive jaundice via inhibition of the extrinsic apoptosis pathway.](#)
  - [Follicle-stimulating hormone regulation of microRNA expression on progesterone production in cultured rat granulosa cells.](#)