

EMMPRIN Polyclonal Antibody
Catalog # AP73654**Specification****EMMPRIN Polyclonal Antibody - Product Information**

Application	WB
Primary Accession	P35613
Reactivity	Human
Host	Rabbit
Clonality	Polyclonal

EMMPRIN Polyclonal Antibody - Additional Information**Gene ID** 682**Other Names**

BSG; Basigin; 5F7; Collagenase stimulatory factor; Extracellular matrix metalloproteinase inducer; EMMPRIN; Leukocyte activation antigen M6; OK blood group antigen; Tumor cell-derived collagenase stimulatory factor; TCSF; CD147

Dilution

WB~~Western Blot: 1/500 - 1/2000. IHC-p: 1/100-1/300. ELISA: 1/20000. Not yet tested in other applications.

Format

Liquid in PBS containing 50% glycerol, 0.5% BSA and 0.09% (W/V) sodium azide.

Storage Conditions

-20°C

EMMPRIN Polyclonal Antibody - Protein Information**Name** BSG ([HGNC:1116](#))**Function**

[Isoform 1]: Essential for normal retinal maturation and development (By similarity). Acts as a retinal cell surface receptor for NXNL1 and plays an important role in NXNL1-mediated survival of retinal cone photoreceptors (PubMed:<<http://www.uniprot.org/citations/25957687>>25957687). In association with glucose transporter SLC16A1/GLUT1 and NXNL1, promotes retinal cone survival by enhancing aerobic glycolysis and accelerating the entry of glucose into photoreceptors (PubMed:<<http://www.uniprot.org/citations/25957687>>25957687). May act as a potent stimulator of IL6 secretion in multiple cell lines that include monocytes (PubMed:<<http://www.uniprot.org/citations/21620857>>21620857).

Cellular Location

Melanosome. Note=Identified by mass spectrometry in melanosome fractions from stage I to stage IV. [Isoform 2]: Cell membrane; Single-pass type I membrane protein

{ECO:0000250|UniProtKB:P26453}. Endosome Endoplasmic reticulum membrane; Single-pass type I membrane protein {ECO:0000250|UniProtKB:P26453} Basolateral cell membrane; Single-pass type I membrane protein {ECO:0000250|UniProtKB:P26453} [Isoform 4]: Cell membrane; Single-pass type I membrane protein {ECO:0000250|UniProtKB:P26453}

Tissue Location

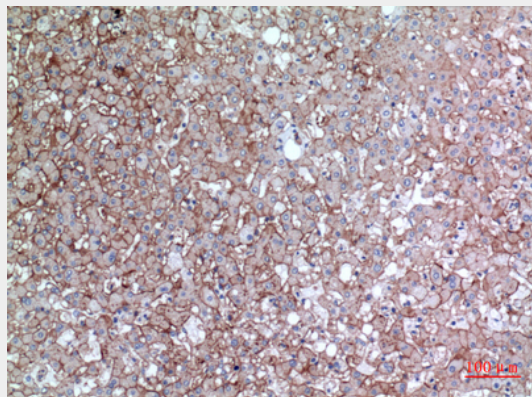
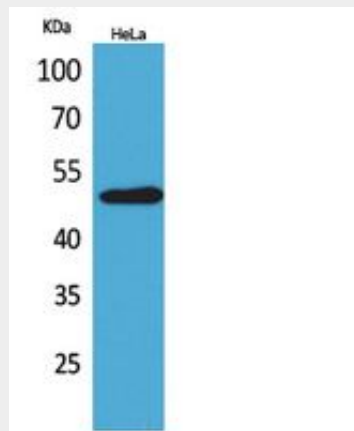
[Isoform 1]: Retina-specific (PubMed:25957687). Expressed in retinal cone photoreceptors (at protein level) (PubMed:25957687). [Isoform 3]: Highly expressed in the bone marrow, fetal liver, lung, testis and thymus.

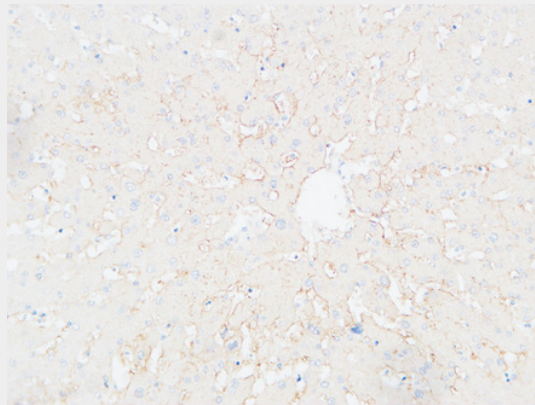
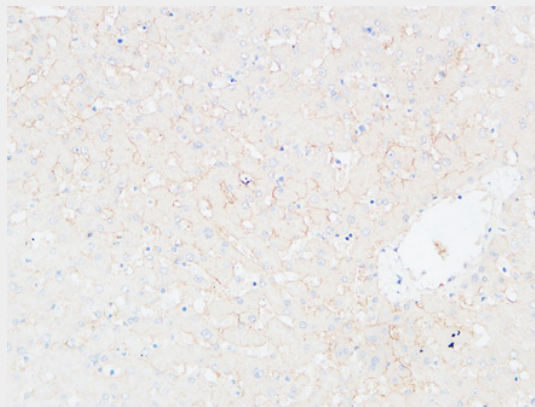
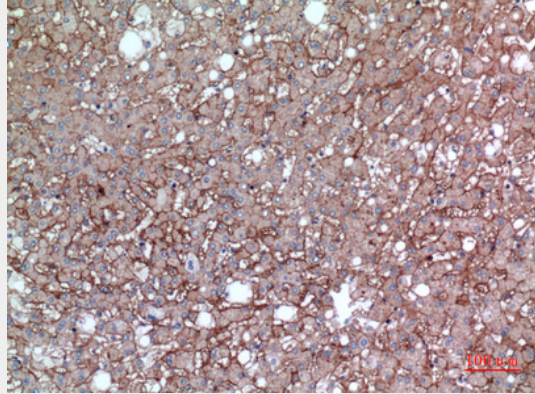
EMMPRIN Polyclonal Antibody - Protocols

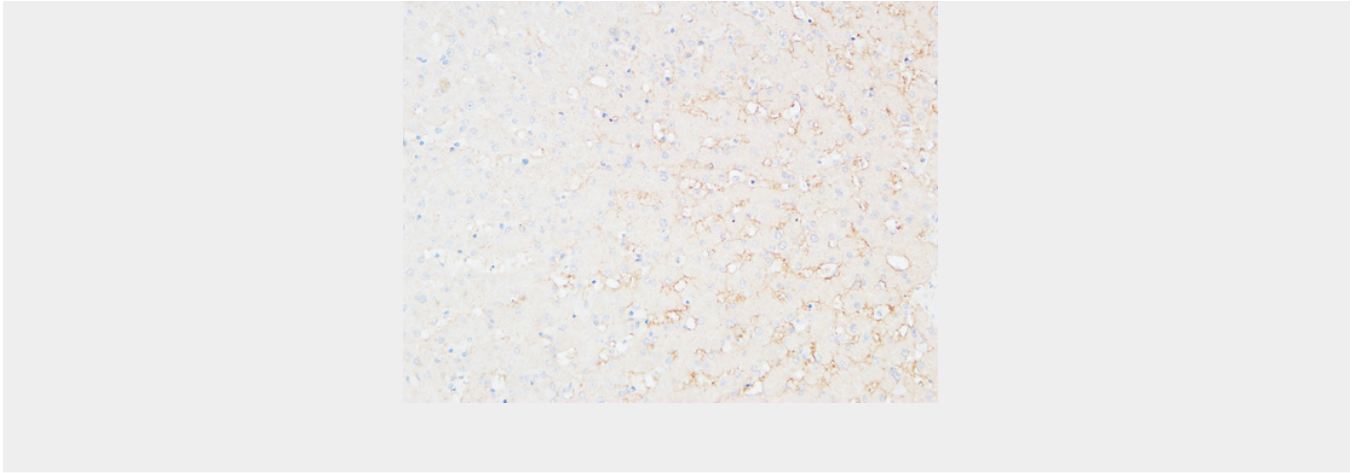
Provided below are standard protocols that you may find useful for product applications.

- [Western Blot](#)
- [Blocking Peptides](#)
- [Dot Blot](#)
- [Immunohistochemistry](#)
- [Immunofluorescence](#)
- [Immunoprecipitation](#)
- [Flow Cytometry](#)
- [Cell Culture](#)

EMMPRIN Polyclonal Antibody - Images







EMMPRIN Polyclonal Antibody - Background

Plays an important role in targeting the monocarboxylate transporters SLC16A1, SLC16A3, SLC16A8, SLC16A11 and SLC16A12 to the plasma membrane (PubMed:21778275). Plays pivotal roles in spermatogenesis, embryo implantation, neural network formation and tumor progression. Stimulates adjacent fibroblasts to produce matrix metalloproteinases (MMPs). Seems to be a receptor for oligomannosidic glycans. In vitro, promotes outgrowth of astrocytic processes.