

SNRPN Polyclonal Antibody
Catalog # AP73640**Specification**

SNRPN Polyclonal Antibody - Product Information

Application	WB
Primary Accession	P63162
Reactivity	Human, Mouse, Rat
Host	Rabbit
Clonality	Polyclonal

SNRPN Polyclonal Antibody - Additional Information**Gene ID** 6638;8926**Other Names**

SNRPN; HCERN3; SMN; Small nuclear ribonucleoprotein-associated protein N; snRNP-N; Sm protein D; Sm-D; Sm protein N; Sm-N; SmN; Tissue-specific-splicing protein

Dilution

WB~~Western Blot: 1/500 - 1/2000. ELISA: 1/20000. Not yet tested in other applications.

Format

Liquid in PBS containing 50% glycerol, 0.5% BSA and 0.09% (W/V) sodium azide.

Storage Conditions

-20°C

SNRPN Polyclonal Antibody - Protein Information**Name** SNRPN**Synonyms** HCERN3, SMN**Function**

May be involved in tissue-specific alternative RNA processing events.

Cellular Location

Nucleus.

Tissue Location

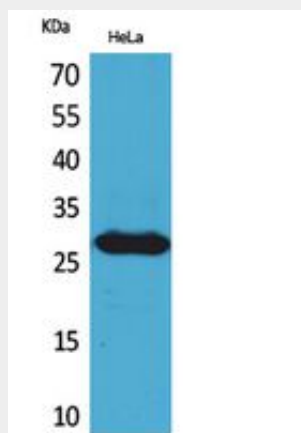
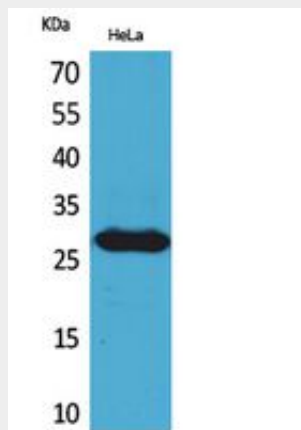
Expressed in brain and lymphoblasts.

SNRPN Polyclonal Antibody - Protocols

Provided below are standard protocols that you may find useful for product applications.

- [Western Blot](#)
- [Blocking Peptides](#)
- [Dot Blot](#)
- [Immunohistochemistry](#)
- [Immunofluorescence](#)
- [Immunoprecipitation](#)
- [Flow Cytometry](#)
- [Cell Culture](#)

SNRPN Polyclonal Antibody - Images



SNRPN Polyclonal Antibody - Background

May be involved in tissue-specific alternative RNA processing events.