

EP1 Polyclonal Antibody
Catalog # AP73630**Specification**

EP1 Polyclonal Antibody - Product Information

Application	WB
Primary Accession	P34995
Reactivity	Human
Host	Rabbit
Clonality	Polyclonal

EP1 Polyclonal Antibody - Additional Information**Gene ID** 5731**Other Names**

PTGER1; Prostaglandin E2 receptor EP1 subtype; PGE receptor EP1 subtype; PGE2 receptor EP1 subtype; Prostanoid EP1 receptor

Dilution

WB~~Western Blot: 1/500 - 1/2000. ELISA: 1/20000. Not yet tested in other applications.

Format

Liquid in PBS containing 50% glycerol, 0.5% BSA and 0.09% (W/V) sodium azide.

Storage Conditions

-20°C

EP1 Polyclonal Antibody - Protein Information**Name** PTGER1**Function**

Receptor for prostaglandin E2 (PGE2). The activity of this receptor is mediated by G(q) proteins which activate a phosphatidylinositol-calcium second messenger system. May play a role as an important modulator of renal function. Implicated the smooth muscle contractile response to PGE2 in various tissues.

Cellular Location

Cell membrane; Multi-pass membrane protein.

Tissue Location

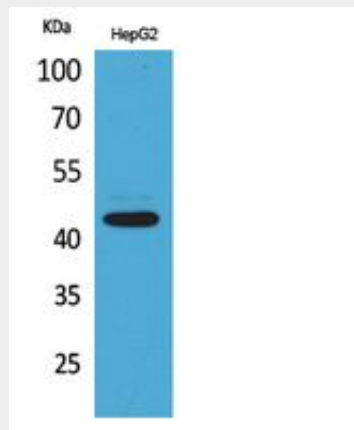
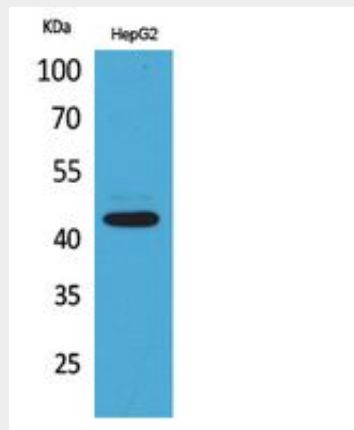
Abundant in kidney. Lower level expression in lung, skeletal muscle and spleen, lowest expression in testis and not detected in liver brain and heart

EP1 Polyclonal Antibody - Protocols

Provided below are standard protocols that you may find useful for product applications.

- [Western Blot](#)
- [Blocking Peptides](#)
- [Dot Blot](#)
- [Immunohistochemistry](#)
- [Immunofluorescence](#)
- [Immunoprecipitation](#)
- [Flow Cytometry](#)
- [Cell Culture](#)

EP1 Polyclonal Antibody - Images



EP1 Polyclonal Antibody - Background

Receptor for prostaglandin E2 (PGE2). The activity of this receptor is mediated by G(q) proteins which activate a phosphatidylinositol-calcium second messenger system. May play a role as an important modulator of renal function. Implicated the smooth muscle contractile response to PGE2 in various tissues.