

**FGF-16 Polyclonal Antibody**  
Catalog # AP73624**Specification**

---

**FGF-16 Polyclonal Antibody - Product Information**

Application	WB
Primary Accession	<a href="#">O43320</a>
Reactivity	Human, Mouse, Rat
Host	Rabbit
Clonality	Polyclonal

**FGF-16 Polyclonal Antibody - Additional Information****Gene ID** 8823**Other Names**

FGF16; Fibroblast growth factor 16; FGF-16

**Dilution**

WB~~Western Blot: 1/500 - 1/2000. IHC-p: 1/100-1/300. ELISA: 1/20000. Not yet tested in other applications.

**Format**

Liquid in PBS containing 50% glycerol, 0.5% BSA and 0.09% (W/V) sodium azide.

**Storage Conditions**

-20°C

**FGF-16 Polyclonal Antibody - Protein Information****Name** FGF16**Function**

Plays an important role in the regulation of embryonic development, cell proliferation and cell differentiation, and is required for normal cardiomyocyte proliferation and heart development.

**Cellular Location**

Secreted {ECO:0000250|UniProtKB:O54769}.

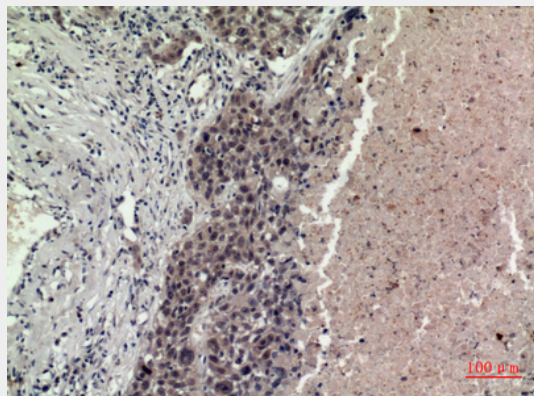
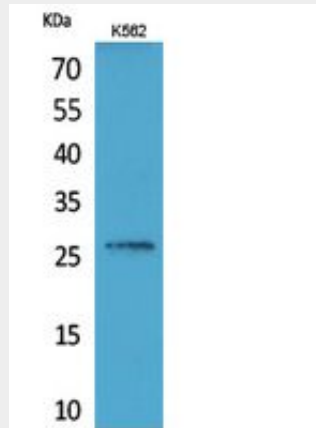
**FGF-16 Polyclonal Antibody - Protocols**

Provided below are standard protocols that you may find useful for product applications.

- [Western Blot](#)
- [Blocking Peptides](#)
- [Dot Blot](#)

- [Immunohistochemistry](#)
- [Immunofluorescence](#)
- [Immunoprecipitation](#)
- [Flow Cytometry](#)
- [Cell Culture](#)

### FGF-16 Polyclonal Antibody - Images



### FGF-16 Polyclonal Antibody - Background

Plays an important role in the regulation of embryonic development, cell proliferation and cell differentiation, and is required for normal cardiomyocyte proliferation and heart development.