

Syntaxin 1 Polyclonal Antibody
Catalog # AP73623**Specification****Syntaxin 1 Polyclonal Antibody - Product Information**

Application	WB
Primary Accession	Q16623
Reactivity	Human, Mouse, Rat
Host	Rabbit
Clonality	Polyclonal

Syntaxin 1 Polyclonal Antibody - Additional Information**Gene ID** 6804**Other Names**

STX1A; STX1; Syntaxin-1A; Neuron-specific antigen HPC-1

Dilution

WB~Western Blot: 1/500 - 1/2000. IHC-p: 1/100-1/300. ELISA: 1/20000. Not yet tested in other applications.

Format

Liquid in PBS containing 50% glycerol, 0.5% BSA and 0.09% (W/V) sodium azide.

Storage Conditions

-20°C

Syntaxin 1 Polyclonal Antibody - Protein Information**Name** STX1A**Synonyms** STX1**Function**

Plays an essential role in hormone and neurotransmitter calcium-dependent exocytosis and endocytosis (PubMed: [26635000](http://www.uniprot.org/citations/26635000)). Part of the SNARE (Soluble NSF Attachment Receptor) complex composed of SNAP25, STX1A and VAMP2 which mediates the fusion of synaptic vesicles with the presynaptic plasma membrane. STX1A and SNAP25 are localized on the plasma membrane while VAMP2 resides in synaptic vesicles. The pairing of the three SNAREs from the N-terminal SNARE motifs to the C-terminal anchors leads to the formation of the SNARE complex, which brings membranes into close proximity and results in final fusion. Participates in the calcium-dependent regulation of acrosomal exocytosis in sperm (PubMed: [23091057](http://www.uniprot.org/citations/23091057)). Also plays an important role in the exocytosis of hormones such as insulin or glucagon-like peptide 1 (GLP-1) (By similarity).

Cellular Location

Cytoplasmic vesicle, secretory vesicle, synaptic vesicle membrane {ECO:0000250|UniProtKB:O35526}; Single-pass type IV membrane protein {ECO:0000250|UniProtKB:O35526}. Synapse, synaptosome {ECO:0000250|UniProtKB:O35526}. Cell membrane {ECO:0000250|UniProtKB:P32851}. Note=Colocalizes with KCNB1 at the cell membrane. {ECO:0000250|UniProtKB:P32851}

Tissue Location

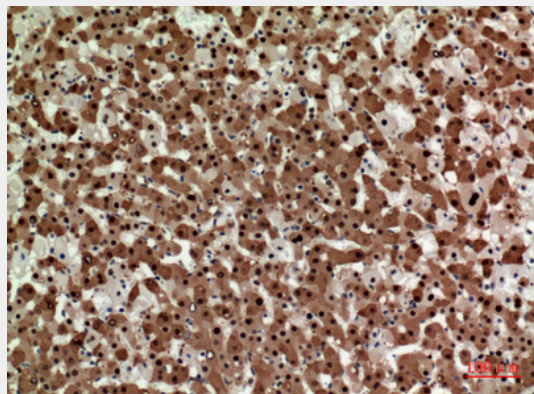
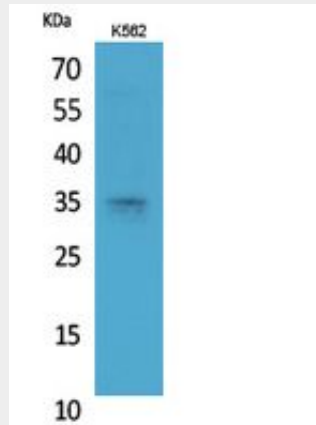
[Isoform 1]: Highly expressed in embryonic spinal cord and ganglia and in adult cerebellum and cerebral cortex

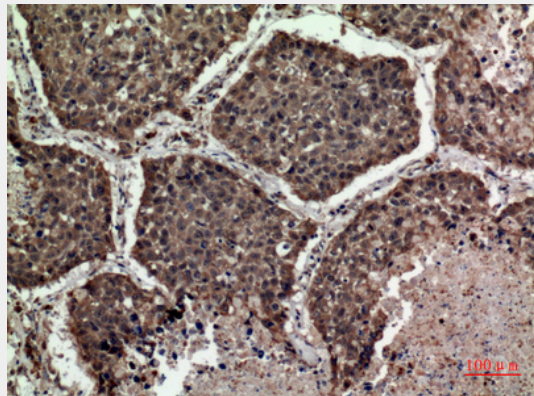
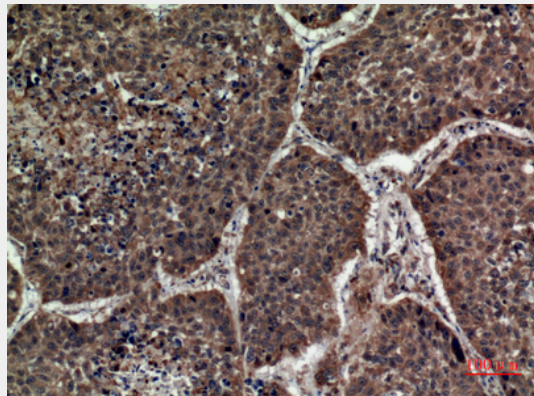
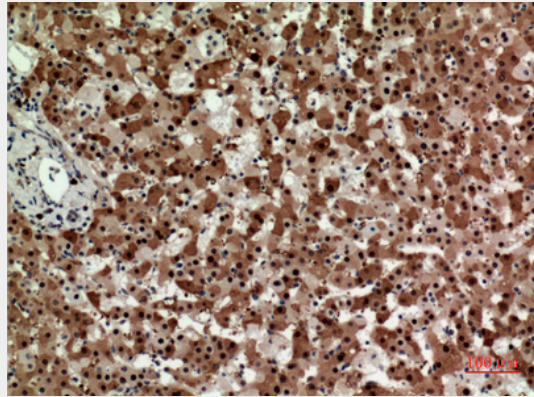
Syntaxin 1 Polyclonal Antibody - Protocols

Provided below are standard protocols that you may find useful for product applications.

- [Western Blot](#)
- [Blocking Peptides](#)
- [Dot Blot](#)
- [Immunohistochemistry](#)
- [Immunofluorescence](#)
- [Immunoprecipitation](#)
- [Flow Cytometry](#)
- [Cell Culture](#)

Syntaxin 1 Polyclonal Antibody - Images





Syntaxin 1 Polyclonal Antibody - Background

Plays a role in hormone and neurotransmitter exocytosis (By similarity). Potentially involved in docking of synaptic vesicles at presynaptic active zones. May mediate Ca^{2+} - regulation of exocytosis acrosomal reaction in sperm.