

**APOL1 Antibody**  
**Purified Rabbit Polyclonal Antibody (Pab)**  
**Catalog # AP7361a**

**Specification**

---

**APOL1 Antibody - Product Information**

Application	<b>WB, IHC-P, FC,E</b>
Primary Accession	<a href="#">O14791</a>
Reactivity	<b>Human</b>
Host	<b>Rabbit</b>
Clonality	<b>Polyclonal</b>
Isotype	<b>Rabbit IgG</b>
Calculated MW	<b>43974</b>
Antigen Region	<b>137-171</b>

**APOL1 Antibody - Additional Information**

**Gene ID** 8542

**Other Names**

Apolipoprotein L1, Apolipoprotein L, Apo-L, ApoL, Apolipoprotein L-I, ApoL-I, APOL1, APOL

**Target/Specificity**

This APOL1 antibody is generated from rabbits immunized with a KLH conjugated synthetic peptide between 137-171 amino acids from human APOL1.

**Dilution**

WB~~1:1000  
IHC-P~~1:10~50  
FC~~1:10~50

**Format**

Purified polyclonal antibody supplied in PBS with 0.09% (W/V) sodium azide. This antibody is prepared by Saturated Ammonium Sulfate (SAS) precipitation followed by dialysis against PBS.

**Storage**

Maintain refrigerated at 2-8°C for up to 2 weeks. For long term storage store at -20°C in small aliquots to prevent freeze-thaw cycles.

**Precautions**

APOL1 Antibody is for research use only and not for use in diagnostic or therapeutic procedures.

**APOL1 Antibody - Protein Information**

**Name** APOL1

**Synonyms** APOL

**Function** May play a role in lipid exchange and transport throughout the body. May participate in reverse cholesterol transport from peripheral cells to the liver.

**Cellular Location**

Secreted.

**Tissue Location**

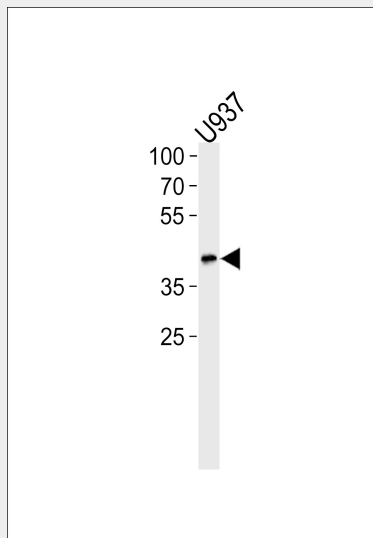
Plasma. Found on APOA-I-containing high density lipoprotein (HDL3). Expressed in pancreas, lung, prostate, liver, placenta and spleen

**APOL1 Antibody - Protocols**

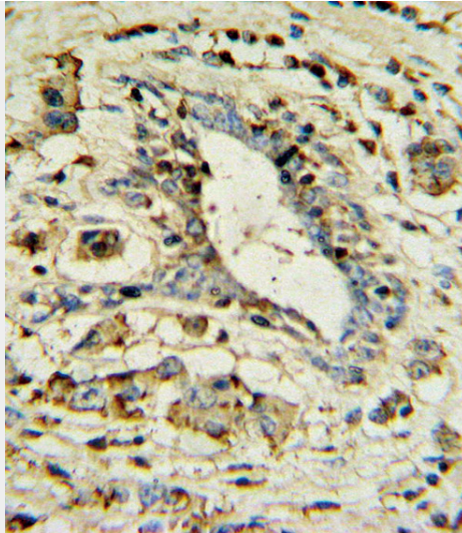
Provided below are standard protocols that you may find useful for product applications.

- [Western Blot](#)
- [Blocking Peptides](#)
- [Dot Blot](#)
- [Immunohistochemistry](#)
- [Immunofluorescence](#)
- [Immunoprecipitation](#)
- [Flow Cytometry](#)
- [Cell Culture](#)

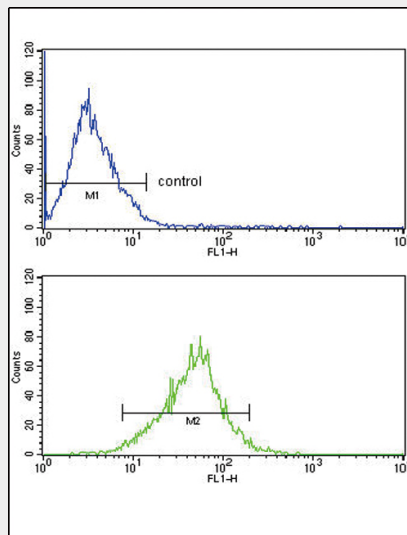
**APOL1 Antibody - Images**



APOL1-BH3 Domain Antibody (Cat. #AP7361a) western blot analysis in U937 cell line lysates (35ug/lane). This demonstrates the APOL1-BH3 Domain antibody detected the APOL1-BH3 Domain protein (arrow).



APOL1 Antibody (Cat. #AP7361a) IHC analysis in formalin fixed and paraffin embedded human breast carcinoma followed by peroxidase conjugation of the secondary antibody and DAB staining. This data demonstrates the use of the APOL1 Antibody for immunohistochemistry. Clinical relevance has not been evaluated.



APOL1 Antibody (19169) FC analysis of MCF-7 cells (bottom histogram) compared to a negative control cell (top histogram). FITC-conjugated goat-anti-rabbit secondary antibodies were used for the analysis.

### APOL1 Antibody - Background

APOL1 is a secreted high density lipoprotein which binds to apolipoprotein A-I. Apolipoprotein A-I is a relatively abundant plasma protein and is the major apoprotein of HDL. It is involved in the formation of most cholesteryl esters in plasma and also promotes efflux of cholesterol from cells. This apolipoprotein L family member may play a role in lipid exchange and transport throughout the body, as well as in reverse cholesterol transport from peripheral cells to the liver.

### APOL1 Antibody - References

- Li,Q., Clin. Chim. Acta 403 (1-2), 152-155 (2009)
- Zhaorigetu,S., Autophagy 4 (8), 1079-1082 (2008)