

Inhibin β -B Polyclonal Antibody
Catalog # AP73591**Specification**

Inhibin β -B Polyclonal Antibody - Product Information

Application	WB
Primary Accession	P09529
Reactivity	Human, Mouse, Rat
Host	Rabbit
Clonality	Polyclonal

Inhibin β -B Polyclonal Antibody - Additional Information**Gene ID** 3625**Other Names**

INHBB; Inhibin beta B chain; Activin beta-B chain

Dilution

WB~~Western Blot: 1/500 - 1/2000. IHC-p: 1/100-1/300. ELISA: 1/20000. Not yet tested in other applications.

Format

Liquid in PBS containing 50% glycerol, 0.5% BSA and 0.09% (W/V) sodium azide.

Storage Conditions

-20°C

Inhibin β -B Polyclonal Antibody - Protein Information**Name** INHBB**Function**

Inhibins and activins inhibit and activate, respectively, the secretion of follitropin by the pituitary gland. Inhibins/activins are involved in regulating a number of diverse functions such as hypothalamic and pituitary hormone secretion, gonadal hormone secretion, germ cell development and maturation, erythroid differentiation, insulin secretion, nerve cell survival, embryonic axial development or bone growth, depending on their subunit composition. Inhibins appear to oppose the functions of activins.

Cellular Location

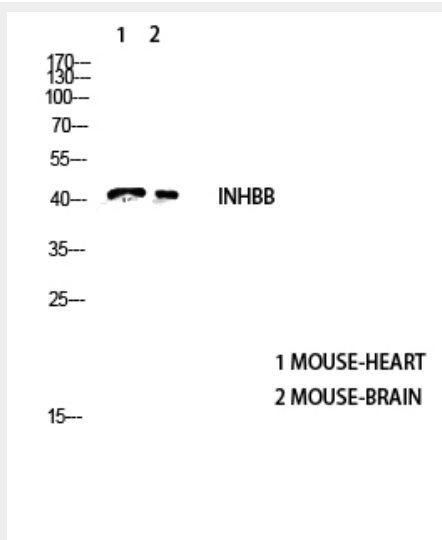
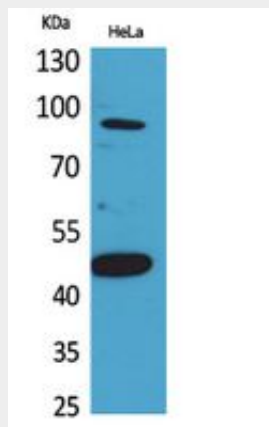
Secreted.

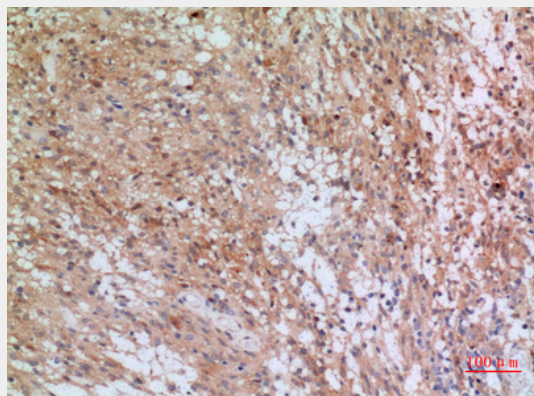
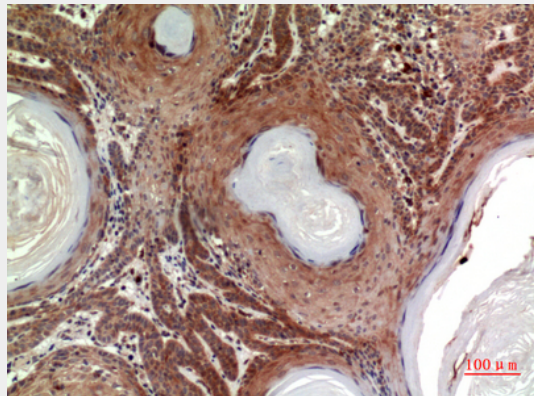
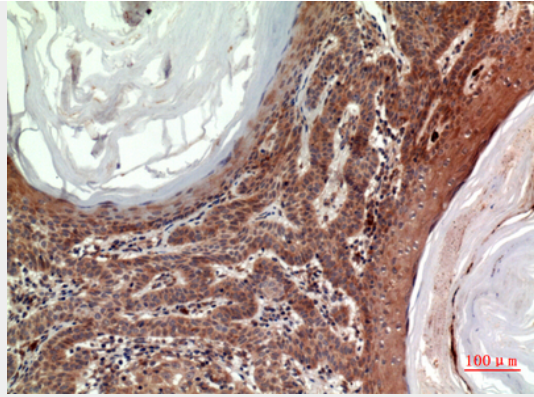
Inhibin β -B Polyclonal Antibody - Protocols

Provided below are standard protocols that you may find useful for product applications.

- [Western Blot](#)
- [Blocking Peptides](#)
- [Dot Blot](#)
- [Immunohistochemistry](#)
- [Immunofluorescence](#)
- [Immunoprecipitation](#)
- [Flow Cytometry](#)
- [Cell Culture](#)

Inhibin β -B Polyclonal Antibody - Images





Inhibin β -B Polyclonal Antibody - Background

Inhibins and activins inhibit and activate, respectively, the secretion of follitropin by the pituitary gland. Inhibins/activins are involved in regulating a number of diverse functions such as hypothalamic and pituitary hormone secretion, gonadal hormone secretion, germ cell development and maturation, erythroid differentiation, insulin secretion, nerve cell survival, embryonic axial development or bone growth, depending on their subunit composition. Inhibins appear to oppose the functions of activins.