

**CD42b Polyclonal Antibody**  
Catalog # AP73576**Specification**

---

**CD42b Polyclonal Antibody - Product Information**

Application	<b>WB</b>
Primary Accession	<a href="#">P07359</a>
Reactivity	<b>Human</b>
Host	<b>Rabbit</b>
Clonality	<b>Polyclonal</b>

**CD42b Polyclonal Antibody - Additional Information****Gene ID** 2811**Other Names**

GP1BA; Platelet glycoprotein Ib alpha chain; GP-Ib alpha; GPIb-alpha; GPIbA; Glycoprotein Ibalpha; Antigen CD42b-alpha; CD42b

**Dilution**

WB~~Western Blot: 1/500 - 1/2000. IHC-p: 1/100-1/300. ELISA: 1/20000. Not yet tested in other applications.

**Format**

Liquid in PBS containing 50% glycerol, 0.5% BSA and 0.09% (W/V) sodium azide.

**Storage Conditions**

-20°C

**CD42b Polyclonal Antibody - Protein Information****Name** GP1BA**Function**

GP-Ib, a surface membrane protein of platelets, participates in the formation of platelet plugs by binding to the A1 domain of vWF, which is already bound to the subendothelium.

**Cellular Location**

Membrane; Single-pass type I membrane protein.

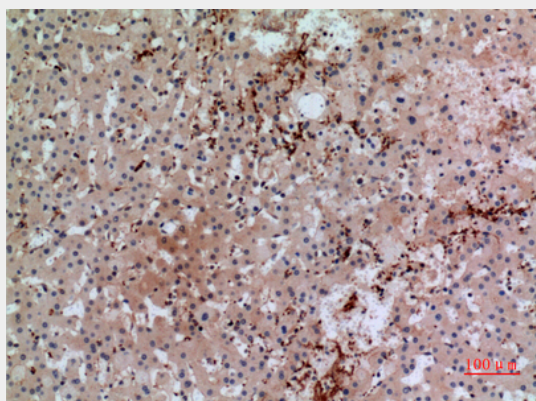
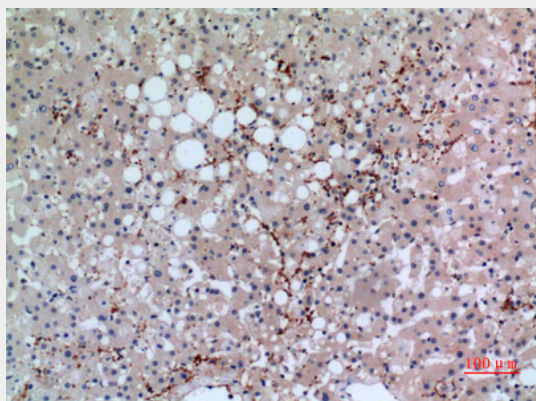
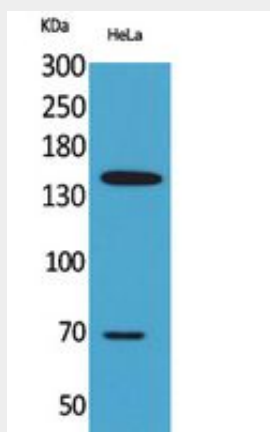
**CD42b Polyclonal Antibody - Protocols**

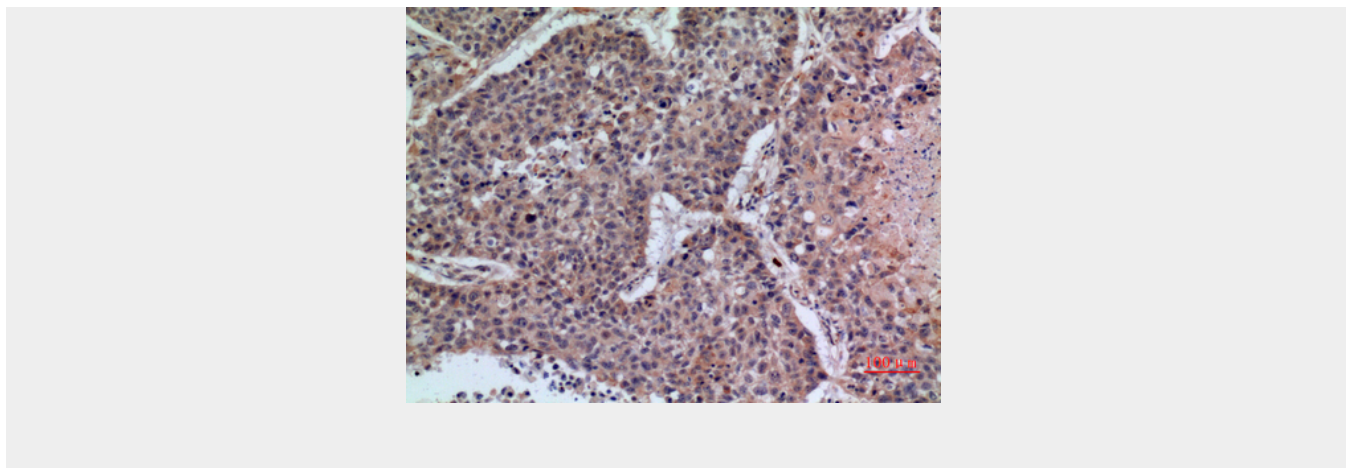
Provided below are standard protocols that you may find useful for product applications.

- [Western Blot](#)
- [Blocking Peptides](#)

- [Dot Blot](#)
- [Immunohistochemistry](#)
- [Immunofluorescence](#)
- [Immunoprecipitation](#)
- [Flow Cytometry](#)
- [Cell Culture](#)

### CD42b Polyclonal Antibody - Images





### **CD42b Polyclonal Antibody - Background**

GP-Ib, a surface membrane protein of platelets, participates in the formation of platelet plugs by binding to the A1 domain of vWF, which is already bound to the subendothelium.